



Mahidol University
International College

MUIC GRADUATES SURVEY ACADEMIC YEAR 2017 - 2018



**Academic Strategy Unit,
Strategy and Academic Development Group,
The Office of Educational Affairs**



Preface

A report on Graduates survey for the academic year 2017-2018 is an annual report of graduates' perceptions regarding their educational experience and its impact on graduates' development at Mahidol University International College (MUIC). The survey which covered a variety of issues related to curriculum objectives, curriculum structure, student's qualifications, program's lecturers, advisor's qualifications, support services, course management, student affairs and student development, course measurement and evaluations, program achievement, program's quality assurance, and multi-cultural experience.

Findings and suggestions from the survey are disseminated to MUIC Executives and Division Chairs for developing an appropriate action plan. Valuable insights were obtained and used to produce qualified graduates who will contribute to the development of the society.

Suggestions or recommendations to improve the report in the future are welcomed and highly appreciated.

Academic Strategy Unit
Strategy and Academic Development Group
The Office of Academic Affairs (OAA)

TABLE OF CONTENTS

	Page
Preface	i
Table of Contents	ii
List of Tables	iv
List of Figures	v
CHAPTER I	
Introduction	
Rationale	1
Objectives	1
Scope of the Study	2
Expectations	2
Keywords	2
CHAPTER II	
Research Methods	
Population	4
Tool	4
Data Collection and Analysis	5
CHAPTER III	
Results	
Part I: General Information	
- Graduates in the Academic Year 2017-2018 (Survey Responses / The Number of Study Terms for Graduation / Minor(s))	8
- Cumulative GPA.	10
Part II: Evaluation of MUIC Curriculum	
- Curriculum Objectives	12
- Curriculum Structure	18
- Curriculum Content	23
- Student's Qualifications	26

TABLE OF CONTENTS (CONTINUED)

	Page
- Program's Lecturers	28
- Advisor's Qualifications	31
- Support Services	33
- Course Management	36
- Student Affairs & Student Development	39
- Course Measurement & Evaluations	41
- Program Achievement	43
- Program's Quality Assurance	45
- Multi-cultural Experience	47
Part III: MUIC Experience Impacting Graduates' Development	
- Skills	49
- Contribution to Personal Development	49
Part IV: Willingness to Attend and to Recommend Others to Study at MUIC	
- Willingness to Attend MUIC if the Graduates Had to Make a College Choice All Over Again	50
- Willingness to Recommend Others to Study at MUIC	50
CHAPTER IV	
Conclusion	51

LIST OF TABLES

Table	Page
1. The number of graduates of the Academic Year 2017-2018 by program (Survey Responses / The Number of Study Terms for Graduation / Minor(s))	8
2. Comparison of Cumulative GPAs (3 Academic Years)	10
3. Mean and Percentage of Graduates' Opinions on Curriculum Structure	18
4. Mean and Percentage of Graduates' Opinions on Curriculum Content	23
5. Mean and Percentage of the Graduates' Opinions on Student's Qualifications	26
6. Mean and Percentage of the Graduates' Opinions on Program's Lecturers	28
7. Mean and Percentage of the Graduates' Opinions on Advisor's Qualifications	31
8. Mean and Percentage of the Graduates' Opinions on Support Services (Educational Materials, textbooks, Buildings, and Sites)	33
9. Mean and Percentage of the Graduates' Opinions on Course Management	36
10. Mean and Percentage of the Graduates' Opinions on Student Affairs & Student Development	39
11. Mean and Percentage of the Graduates' Opinions on Course Measurement & Evaluations	41
12. Mean and Percentage of the Graduates' Opinions on Program Achievement	43
13. Mean and Percentage of the Graduates' Opinions on Program's Quality Assurance	45
14. Mean and Percentage of the Graduates' Opinions on Multi-Cultural Experience	47

LIST OF FIGURES

Figure	Page
1. Percentage of Survey Responses for Overall MUIC	9
2. Comparison of the Number of Study Terms for Graduation by program	9
3. Comparison of Mean Scores of Cumulative GPA by program	11
4. Comparison of Mean Score of Curriculum Structure by Program	20
5. Comparison of Percentage of Graduates' Opinions on the Number of Credits of Curriculum Structure	21
6. Comparison of Percentage of Graduates Who Disagree on the Number of Credits of Curriculum Structure	22
7. Comparison of Mean Scores of Curriculum Content by Program	25
8. Comparison of Mean Scores of Student's Qualifications by Program	27
9. Comparison of Mean Score of Program's Lecturers by Program	30
10. Comparison of Mean Scores of Advisor's Qualifications by Program	32
11. Comparison of Mean Scores of Support Services by Program	35
12. Comparison of Mean Scores of Course Management by Program	38
13. Comparison of Mean Scores of Student Affairs & Student Development by Program ..	40
14. Comparison of Mean Scores of Course Measurement & Evaluations by Program	42
15. Comparison of Mean Scores of Program Achievement by Program	44
16. Comparison of Mean Scores of Program's Quality Assurance by Program	46
17. Comparison of Mean Scores of Multi-Cultural Experience by Program	48
18. Comparison of Percentage of Development on Skills	49
19. Comparison of Percentage of Contribution to Personal Development	49
20. Comparison of Mean Scores in Each Aspect	51

CHAPTER I

Introduction

Rationale:

To understand clearly about graduates' perceptions on MUIC experiences, a survey can serve as a tool to obtain information for improving the college's understanding of the level of graduates' satisfaction and dissatisfaction with the several factors. It is necessary for the college to develop curricula and instruction to be more effective and responsive to student expectations and satisfy the needs of a changing marketplace and society.

Therefore, the Strategy and Academic Development Section administered the Graduates Survey for the Academic Year 2017-2018 to obtain valuable information related to the perception of the MUIC graduates learning experience including the programs, support and academic services, and experience impacting graduates' development, etc.

In addition, the implications of this survey is a part of the quality assurance program to enable MUIC to formulate and implement strategies to maintain the strength in the overall success of the students.

Objectives:

1. To know the graduates' opinion level on the overall experiences at MUIC for the academic year 2017-2018.
2. To identify the factors that will help MUIC to maintain and increase the satisfaction of graduates.

Scope of the Study:

The survey assessed the level of MUIC graduates' opinion on the MUIC experiences for the academic year 2017-2018. The collected data was analyzed and compared across various programs.

Expectations:

1. Knowledge of the graduates' opinion level on the MUIC experiences for the academic year 2017-2018
2. Identification of the factors encouraging the graduates to maintain and increase the graduates' satisfaction and willingness to recommend others to study at MUIC.

Keywords:

AM	Applied Mathematics Program
AP	Animation Production Program
BA	Business Administration Division
BE	Business Economics Program
BI	Biological Science Program
CD	Communication Design Program
CH	Chemistry Program
CI	Computer Engineering Program
CS	Computer Science Program
EN	Environment Science Program
FAA	Fine and Applied Arts Division
FP	Film Production Program
FS	Food Science and Technology Program
IH	International Hospitality Management Program

IS	Information Systems Program
MF	Finance Program
MI	International Business Program
MK	Marketing Program
PY	Physics Program
SCI	Science Division
SS	Social Science Program
THM	Tourism and Hospitality Management Division
TP	Television Production Program
The graduate	A person who has graduated from Mahidol University International College (MUIC) in the Academic Year 2016-2017
The opinion	The thoughts or beliefs that graduates have
The satisfaction	A pleasant feeling which the graduate receives during his/her studies at Mahidol University International College (MUIC)

CHAPTER II

Research Method

Population:

The population consisted of 757 students who registered for graduation in the academic year 2017-2018. Approximately 709 (93.66%) of these students completed and returned the survey.

Tool:

The tool of this survey was a questionnaire that was adapted from the survey developed by the Division of Education Administration, Mahidol University (แบบสอบถามความพึงพอใจหลักสูตร) and was translated from Thai into English. The questionnaire was divided into 4 parts as follows:

- Part 1 is *Respondent's Profile*: Program/ Major, Cumulative GPA, and Gender.
- Part 2 is *Evaluation of the MUIC Curriculum*:
 - Curriculum Objectives
 - Curriculum Structure
 - Curriculum Content
 - Student's Qualifications
 - Program's Lecturers
 - Advisor's Qualifications
 - Support Services (Educational Materials, Textbooks, Buildings, and Sites)
 - Course Management
 - Student Affairs & Student Development
 - Course Measurement & Evaluations
 - Program Achievement
 - Program's Quality Assurance
 - Multi-cultural experience
- Part 3 is *MUIC Experience Impacting Graduates' Development* including Skills, and

Contribution to Personal Development.

- Part 4 is *Willingness to Attend and to Recommend Others to Study at MUIC*:
 - The willingness to attend MUIC if the graduates had to make a college choice all over again
 - The willingness to recommend others to study at MUIC
 - Additional comments or suggestions

Data Collection and Analysis:

1. Questionnaires of Graduates Survey for the Academic Year 2017-2018 were distributed to all students who registered for graduation in trimester 3/2016-2017, trimester 1/2017-2018, and trimester 2/2017-2018 at the Office of Academic Affairs and Research.
2. The graduates completed the questionnaires and returned them to the Academic Strategy Unit, the Office of Academic Affairs.
3. The collected data was coded and analyze by using SPSS program to obtain Descriptive Statistics including frequencies, percentages, means, and standard deviations.
4. Additional comments and suggestions were reported.

CHAPTER III

Results

The results of the Graduates Survey for the academic year 2017-2018 are divided into five parts as the following:

Part I: General Information

1.1 Graduates in the Academic Year 2017-2018 (Survey Responses / The Number of Study Terms for Graduation / Minor(s))

1.2 Cumulative GPA.

Part II: Evaluation of MUIC Curriculum

2.1 Curriculum Objectives

2.2 Curriculum Structure

2.3 Curriculum Content

2.4 Student's Qualifications

2.5 Program's Lecturers

2.6 Advisor's Qualifications

2.7 Support Services

2.8 Course Management

2.9 Student Affairs & Student Development

2.10 Course Measurement & Evaluations

2.11 Program Achievement

2.12 Program's Quality Assurance

2.13 Multi-cultural Experience

Part III: MUIC Experience Impacting Graduates' Development

3.1 Skills

3.2 Contribution to Personal Development

Part IV: Willingness to Attend and to Recommend Others to Study at MUIC

4.1 Willingness to attend MUIC if the graduates had to make a college choice over again

4.2 Willingness to recommend others to study at MUIC

4.3 Additional comments or suggestions

Part I: General Information

Out of the total 757 graduates, 709 graduates completed and returned the questionnaires to the Office of Academic Affairs, representing a response rate of 93.66%.

❖ Graduates of the Academic Year 2017-2018

(Survey Responses / The Number of Study Terms for Graduation / Minor(s))

Table 1: The number of graduates of the academic year 2017-2018 by program

(Survey Responses / The Number of Study Terms for Graduation / Minor(s))

Div.	Major	N of Graduates	Respondents		The Number of Study Terms for Graduation								Graduates with Minor(s)	
					MIN of Study Terms	MAX of Study Terms	Less than 12 Study Terms		12 Study Terms (4 Years)		More than 12 Study Terms			
			N	% within Major			N	% within Major	N	% within Major	N	% within Major	N	% within Major
BA	BE	53	49	92.45%	9	15	11	20.75%	20	37.74%	17	32.08%	9	16.98%
	MF	115	109	94.78%	11	17	18	15.65%	59	51.30%	32	27.83%	24	20.87%
	MI	150	141	94.00%	9	22	16	10.67%	64	42.67%	60	40.00%	20	13.33%
	MK	96	92	95.83%	9	18	10	10.42%	42	43.75%	39	40.63%	9	9.38%
	IS	7	7	100.00%	12	14		0.00%	1	14.29%	5	71.43%	2	28.57%
FAA	AP	22	18	81.82%	10	14	4	18.18%	12	54.55%	2	9.09%		0.00%
	FP	33	30	90.91%	10	14	9	27.27%	16	48.48%	5	15.15%		0.00%
	TP	22	22	100.00%	10	17	6	27.27%	13	59.09%	3	13.64%		0.00%
	CD	17	17	100.00%	12	18		0.00%	3	17.65%	14	82.35%	1	5.88%
THM	IH/TH	99	93	93.94%	10	21	4	4.04%	36	36.36%	52	52.53%	10	10.10%
SCI	AM	1	1	100.00%	12	12		0.00%	1	100.00%		0.00%		0.00%
	BI	31	30	96.77%	10	14	6	19.35%	10	32.26%	14	45.16%	10	32.26%
	CH	1	1	100.00%	12	12		0.00%	1	100.00%		0.00%		0.00%
	CI	29	26	89.66%	10	14	8	27.59%	13	44.83%	5	17.24%	4	13.79%
	CS	14	13	92.86%	11	24	1	7.14%	2	14.29%	9	64.29%	4	28.57%
	EN	6	6	100.00%	12	14		0.00%	1	16.67%	5	83.33%	2	33.33%
	FS	13	9	69.23%	11	14	1	7.69%	3	23.08%	5	38.46%	4	30.77%
	PY	2	2	100.00%	12	12		0.00%	2	100.00%		0.00%		0.00%
SS	SS	46	43	93.48%	11	19	5	10.87%	14	30.43%	23	50.00%	11	23.91%
Overall MUIC		757	709	93.66%	9	24	99	13.08%	313	41.35%	290	38.31%	110	14.53%

Note: * In the Academic Year 2017-2018, there were 7 out of 709 respondents who did not report the number of their study terms for graduation on the questionnaires.

Figure 1: Percentage of Survey Responses for Overall MUIC

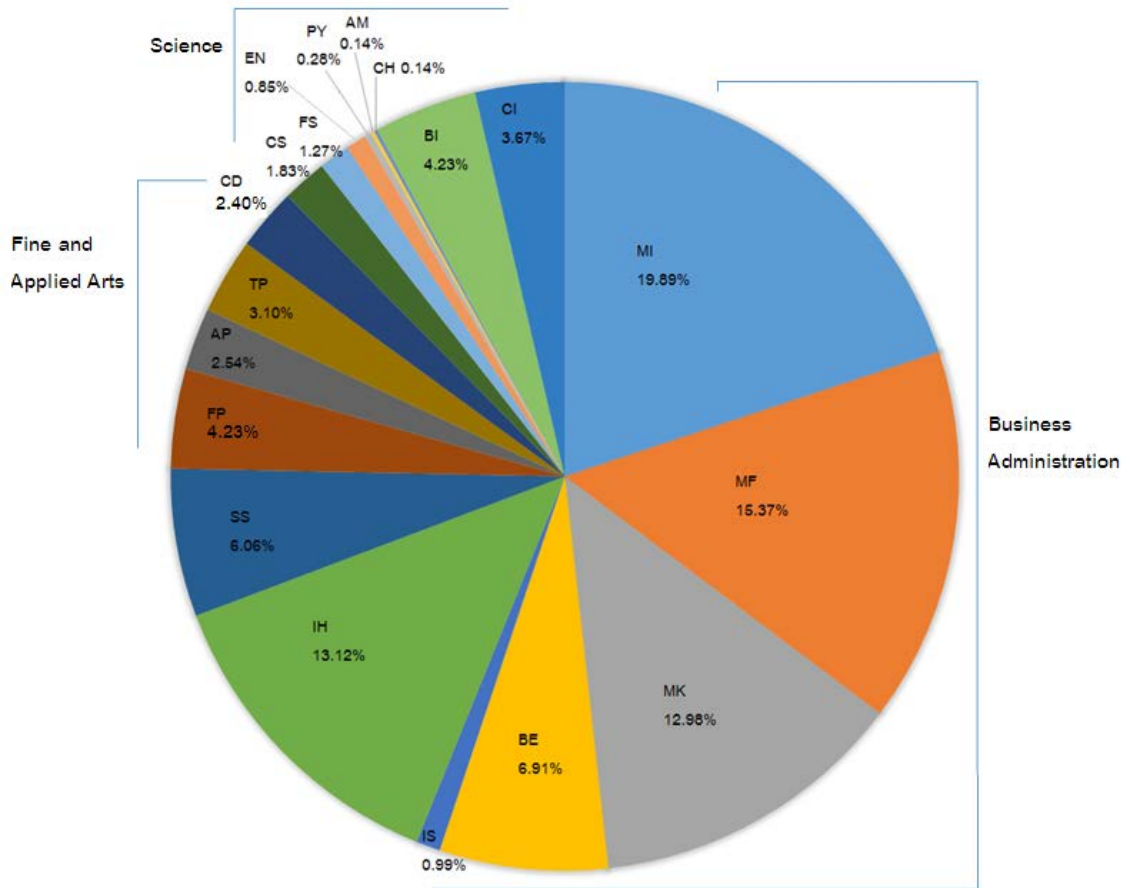
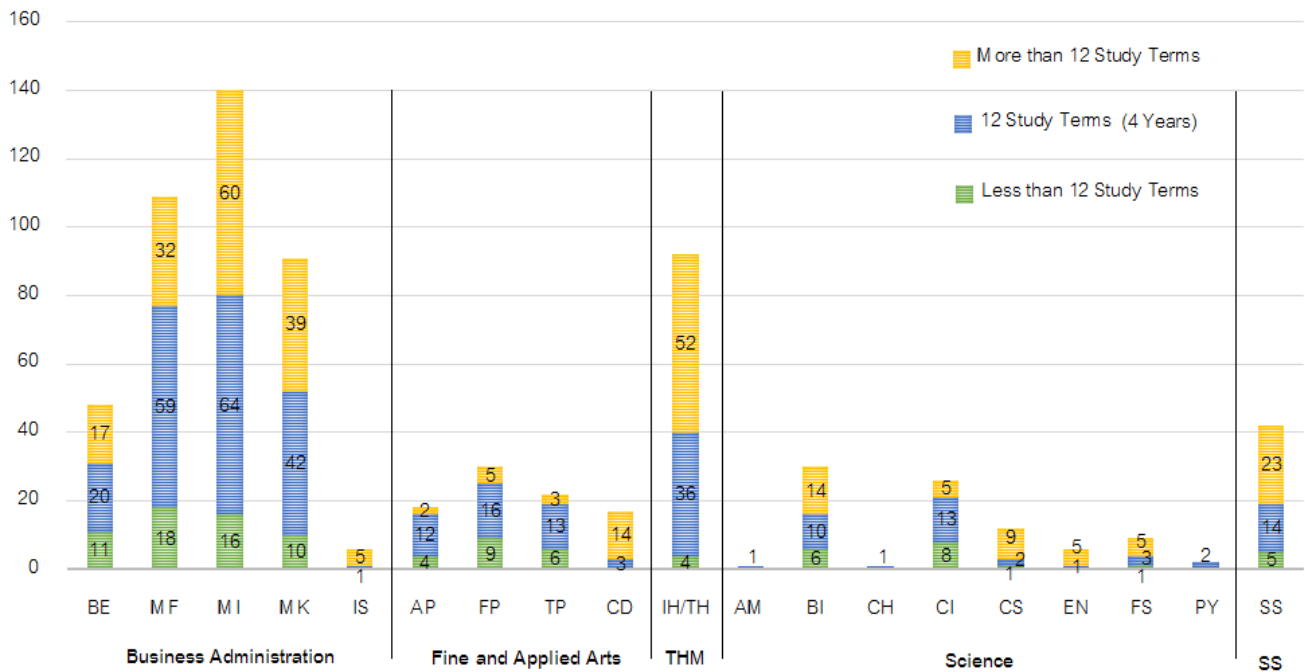


Figure 2: Comparison of the Number of Study Terms for Graduation by program



❖ Cumulative GPA

Table 2: Comparison of Cumulative GPAs (3 Academic Years)

Division	Program	Academic Year 2017-2018 *					Academic Year 2016-2017 **					Academic Year 2015-2016 ***				
		N	Min	Max	M	SD	N	Min	Max	M	SD	N	Min	Max	M	SD
BA	BE	46	2.03	3.80	2.91	0.46	38	2.14	3.76	2.93	0.41	31	2.24	3.92	3.09	0.47
	IS	6	2.59	3.39	3.07	0.31	1	2.80	2.80	2.80	0.00	9	2.30	3.50	2.95	0.36
	MF	106	2.13	3.89	3.10	0.42	92	2.20	3.89	3.09	0.45	76	2.30	3.87	3.14	0.39
	MI	130	2.04	3.76	2.92	0.44	138	2.03	3.96	2.90	0.48	130	2.07	3.95	2.92	0.41
	MK	86	2.09	3.74	2.87	0.40	126	2.06	3.82	2.82	0.42	74	2.18	3.67	2.77	0.38
FAA	CD	12	2.18	3.30	2.86	0.39	27	2.04	3.76	2.99	0.42	23	2.25	3.68	3.01	0.41
	EM	-	-	-	-	-	22	2.02	3.11	2.49	0.40	19	2.43	3.70	3.02	0.33
	AP	15	2.56	3.80	3.26	0.37	-	-	-	-	-	-	-	-	-	-
	FP	25	2.20	3.84	3.15	0.37	-	-	-	-	-	-	-	-	-	-
	TP	21	2.90	3.73	3.22	0.25	-	-	-	-	-	-	-	-	-	-
SCI	AM	1	3.51	3.51	3.51	.	2	3.12	3.85	3.49	0.52	5	3.29	3.88	3.52	0.25
	BI	27	2.66	3.95	3.36	0.38	37	2.00	3.97	3.16	0.45	35	2.35	3.88	3.21	0.44
	CH	1	3.00	3.00	3.00	.	3	2.85	3.65	3.35	0.44	7	2.44	3.51	3.13	0.44
	CI	25	2.10	3.57	2.84	0.41	21	2.00	3.93	3.11	0.51	15	2.26	3.58	2.94	0.40
	CS	12	2.27	3.99	3.00	0.55	7	2.00	3.69	2.87	0.53	10	2.30	3.77	2.98	0.43
	EN	6	2.32	3.86	3.05	0.51	11	2.00	3.72	2.85	0.47	10	2.85	3.67	3.16	0.26
	FS	8	2.42	3.79	3.16	0.41	20	2.29	3.85	3.21	0.46	16	2.58	3.64	3.10	0.32
	PY	1	3.81	3.81	3.81	.	3	2.63	3.52	3.13	0.46	3	2.78	3.14	3.02	0.21
SS	SS	41	2.21	3.64	2.97	0.35	38	2.03	3.82	2.94	0.45	36	2.30	3.87	3.11	0.37
THM	IH	84	2.13	3.84	2.95	0.41	132	2.20	3.81	2.92	0.37	105	2.22	4.00	2.99	0.35
Overall MUIC		653	2.03	3.99	3.00	0.43	718	2.00	3.97	2.95	0.44	604	2.07	4.00	3.02	0.41

Note: * In the Academic Year 2017-2018, there were 56 out of 709 graduates who did not report their Cumulative GPA on the completed and returned questionnaires.

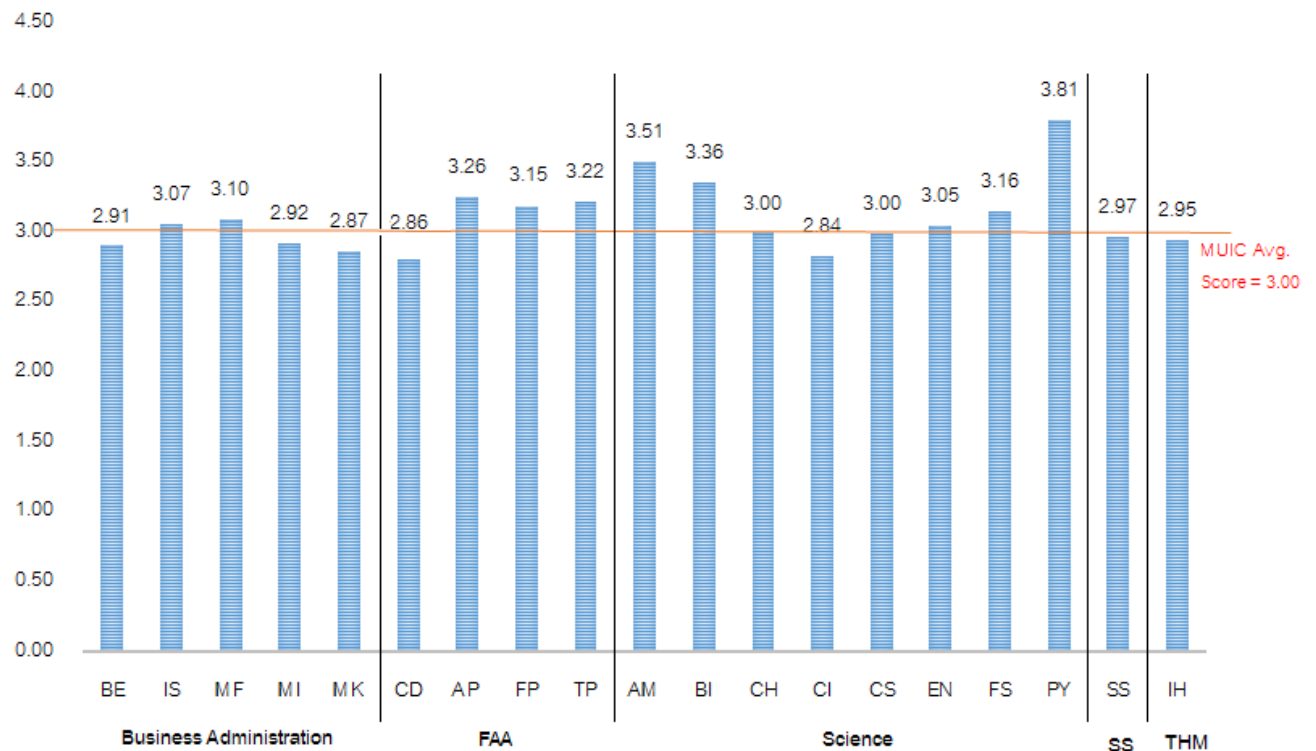
** In the Academic Year 2016-2017, there were 38 out of 756 graduates who did not report their Cumulative GPA on the completed and returned questionnaires.

*** In the Academic Year 2015-2016, there were 68 out of 672 graduates who did not report their Cumulative GPA on the completed and returned questionnaires.

Mean Scores for Cumulative GPA by Program
[Ranked from highest to lowest]

Program	<i>M</i>	<i>SD</i>
1. Animation Production	3.26	0.37
2. Television Production	3.22	0.25
3. Food Science and Technology	3.16	0.41
4. Film Production	3.15	0.37
5. Finance	3.10	0.42
6. Information Systems	3.07	0.31
7. Environmental Science	3.05	0.51
8. Computer Science	3.00	0.55
9. Chemistry	3.00	.
10. Social Science	2.97	0.35
11. International Hospitality Management	2.95	0.41
12. International Business	2.92	0.44
13. Business Economics	2.91	0.46
14. Marketing	2.87	0.40
15. Communication Design	2.86	0.39
16. Computer Engineering	2.84	0.41
Average Score	3.00	0.43

Figure 3: Comparison of Mean Scores of Cumulative GPA by program



Part II: Evaluation of MUIC Curriculum

The graduates' opinions on their experiences at MUIC were measured by using scale of 1-5:

5	=	Strongly Agree
4	=	Agree
3	=	Neutral
2	=	Disagree
1	=	Strongly Disagree

❖ Curriculum Objectives

In this part the curriculum objectives that the 2017-2018 graduates studied were reported in order as the following:

Business Administration Division

- Business Economics Program (BE)
- Finance Program (MF)
- International Business Program (MI)
- Marketing Program (MK)
- Information Systems Program (IS)

Fine and Applied Arts Division

- Animation Production Program (AP)
- Film Production Program (FP)
- Television Production Program (TP)
- Communication Design Program (CD)

Science Division

- Applied Mathematics Program (AM)
- Biological Science Program (BI)
- Chemistry Program (CH)
- Computer Engineering Program (CI)
- Computer Science Program (CS)
- Environmental Science Program (EN)

- Food Science and Technology Program (FS)

- Physics Program (PY)

Tourism and Hospitality Management Division

- International Hospitality Management Program (IH)

Social Science Division

- Social Science Program (SS)

Business Administration Division

- Business Economics Program (BE)

- Finance Program (MF)

- International Business Program (MI)

- Marketing Program (MK)

- Information Systems Program (IS)

Curriculum Objectives	Opinion Level									
	BE (N = 49)		MF (N = 109)		MI (N = 141)		MK (N = 92)		IS (N = 7)	
	M	SD	M	SD	M	SD	M	SD	M	SD
1. Have the knowledge and ability up to and beyond international standards in business.	3.71	0.96	3.80	0.69	3.99	0.72	3.93	0.66	3.57	0.79
2. Can function as highly competent businesspersons using both their technical knowledge in information systems, enhanced analytical skills and their general liberal arts background for the betterment of all humankind.	3.73	0.93	3.87	0.74	3.93	0.72	4.00	0.68	3.86	0.38
3. Have a well-developed ability to effectively use English and the knowledge they have gained in university, outside Thailand and/or in an international business context.	4.02	1.05	4.15	0.75	4.26	0.76	4.30	0.71	4.43	0.53
4. Are able to apply their general knowledge in order to work effectively in an increasingly globalized world, and to work and live harmoniously with people of diverse origins.	4.06	0.94	3.99	0.72	4.17	0.74	4.16	0.67	4.33	0.52
5. Have ethical and socially responsible minds, and the ability to choose the most ethical action in sensitive circumstances.	4.02	0.91	3.97	0.75	4.19	0.69	4.16	0.72	4.33	0.52
Average Score	3.91	0.96	3.96	0.73	4.11	0.00	4.11	0.69	4.10	0.55

 Fine and Applied Arts Division

- Animation Production Program (AP)
- Film Production Program (FP)
- Television Production Program (TP)
- Communication Design Program (CD)

Curriculum Objectives	Opinion Level						Curriculum Objectives	Opinion Level	
	AP (N = 18)		FP (N = 30)		TP (N = 22)			CD (N = 17)	
	M	SD	M	SD	M	SD		M	SD
1. As they advance, students are challenged to conceptualize shows, write scripts, create storyboard, plan productions, and practice the roles of director, producer, camera person, sound engineer, editor, and animator.	3.94	0.73	3.90	0.88	3.57	0.98	1. Have a strong foundation in general design principles, theories and skills.	4.29	0.59
							2. Can begin their professional career armed with an individual, creative portfolio of design work demonstrating conceptual and technical skills.	4.24	0.75
							3. Can continue with post-graduate study.	4.06	0.75
							4. Have excellent (outstanding) visual, verbal and written communication skills in English.	3.88	0.70
							5. Have a strong sense of professionalism, including a commitment to ethical practice and an understanding of the social and environmental impact of their work.	4.18	0.73
Average Score	3.94	0.73	3.90	0.88	3.57	0.98	Average Score	4.13	0.70

 Science Division

- Applied Mathematics Program (AM)
- Biological Science Program (BI)
- Chemistry Program (CH)
- Computer Engineering Program (CI)
- Computer Science Program (CS)
- Environmental Science Program (EN)
- Food Science and Technology Program (FS)
- Physics Program (PY)

Curriculum Objectives	Opinion Level		Curriculum Objectives	Opinion Level		Curriculum Objectives	Opinion Level		Curriculum Objectives	Opinion Level	
	AM (N = 1)			BI (N = 30)			CH (N = 1)			CI (N = 26)	
	M	SD		M	SD		M	SD		M	SD
1. Have the knowledge, logical and problem solving skill up to international standards in applied mathematics.	5.00	0.00	1. To produce personnel at the undergraduate level with a well-developed ability to effectively use their Biological Science knowledge with good command of English in performing research and development in the field of Biological Science, i.e. Biology, Biomedical Science or Biotechnology;	3.87	0.68	1. The knowledge, laboratory and analytical skill up to international standards in chemistry;	5.00	0.00	1. To produce engineering graduates with the knowledge, ability, and skill in computer engineering up to international standards who can apply their knowledge in order to work effectively in an increasingly globalized world;	3.81	0.69
2. Have a well-developed ability to effectively use English and knowledge in a university setting outside Thailand and/or in an international business context as well as in the field of applied mathematics.	4.00	0.00	2. To produce creatively and analytically minded graduates who are interested in learning or continue their studies for higher degree in the field of Biological, Science, i.e. Biology, Biomedical Science or Biotechnology;	3.70	0.95	2. A well-developed ability to effectively use English and knowledge in a university setting outside Thailand and/or in an international business context and as well as in the field of chemistry;	4.00	0.00	2. To produce engineering graduates who can conduct effective analysis, research, and development in computer engineering in Thailand and overseas;	4.08	0.74
3. Have the type of general knowledge to work effectively in an increasingly globalized world, and to work and live harmoniously with people of multiethnic groups.	5.00	0.00	3. To produce intelligent and hard-working graduates in Biological Science, who have ethical and socially responsible mind, and can use both their knowledge, analytical skills, and their general education background.	3.90	0.71	3. Knowledge to work effectively in an increasingly globalized world, and to work and live harmoniously with people of diverse origins;	3.00	0.00	3. To produce engineering graduates with social responsibility, leadership, ethics, who value environmental resources, and apply their knowledge for the benefit of humankind;	3.96	0.77
4. Can function as highly competent mathematicians using both their technical knowledge, enhanced analytical skills and their general liberal arts background for the betterment of all humankind.	4.00	0.00				4. Technical knowledge and excellent analytical skills to function as highly competent chemists, and to use their liberal arts background for the betterment of all humankind.	5.00	0.00	4. To encourage research and academic service in computer engineering and other related engineering disciplines.	3.96	0.77
5. Have ethical and socially responsible minds, and the ability to choose the most ethical action in sensitive circumstances.	4.00	0.00				5. Ethical and socially responsible minds, and the ability to choose the most ethical action in sensitive circumstances.	4.00	0.00			
Average Score	4.40	0.00	Average Score	3.82	0.00	Average Score	4.20	0.00	Average Score	3.95	0.75

Curriculum Objectives	Opinion Level		Curriculum Objectives	Opinion Level		Curriculum Objectives	Opinion Level		Curriculum Objectives	Opinion Level	
	CS (N = 13)			EN (N = 6)			FS (N = 9)			PY (N = 2)	
	M	SD		M	SD		M	SD		M	SD
1. Knowledge competent to international standards in computer science;	4.31	0.48	1. Have the knowledge and skills in Environmental Science up to the international standards;	3.50	1.38	1. Knowledge and ability to function up to international standards in Food Science.	4.00	0.00	1. Have the knowledge and ability up to and beyond the international standards in physics and other related fields.	4.00	1.41
2. Technical, problem solving, and independent learning skills as well as business and people skills;	4.38	0.51	2. Have a capacity to utilize environment and natural resources in sustainable manner;	4.00	1.26	2. A well-developed ability to effectively use English in a university setting outside Thailand and/or in an international business contexts.	4.33	0.71	2. Have a well-developed ability to effectively use English and knowledge in a university setting outside Thailand and/or in an international business context as well as in the field of physics.	5.00	0.00
3. A well-developed ability to effectively use English and knowledge in a university setting outside Thailand and/or in an international business context as well as in the field of computer science;	4.31	0.63	3. Have a background in general education to work effectively and live harmoniously with people of diverse origin;	4.50	0.55	3. General knowledge to work effectively in an increasingly globalized world, and to work and live harmoniously with people of diverse origins.	4.22	0.44	3. Have the type of general knowledge to work effectively in an increasingly globalized world, and to work and live harmoniously with people of diverse backgrounds.	4.50	0.71
4. General knowledge to work effectively in an increasingly globalized world, and to work and live harmoniously with people of multiethnic groups;	4.15	0.69	4. Have an ability to effectively use English and knowledge in a university setting in Thailand or abroad;	5.00	0.00	4. High integrity and morals, along with personal and social responsibilities while pursuing careers in the field of Food Science and Technology.	4.44	0.73	4. Function as highly competent physicists using both their technical knowledge, enhanced analytical skills and their general liberal arts background for the benefit of mankind.	4.00	1.41
5. Highly competent computer scientists using both their technical knowledge, enhanced analytical skills and their general liberal arts background for the betterment of all humankind;	4.08	0.64	5. Have ethical and socially responsible minds and the ability to choose the most ethical actions in sensitive circumstances;	4.67	0.52				5. Have ethical and socially responsible minds, and the ability to choose the most ethical action in sensitive circumstances.	5.00	0.00
6. Ethical and socially responsible minds, and the ability to choose the most ethical action in sensitive circumstances.	4.08	0.67	6. Have a capability to continue their higher education related to environmental field or other related fields in Thailand, as well as abroad.	4.67	0.52						
Average Score	4.22	0.60	Average Score	4.39	0.70	Average Score	4.25	0.47	Average Score	4.50	0.71

 **Tourism and Hospitality Management Division**

- International Hospitality Management Program (IH)

Curriculum Objectives	Opinion Level	
	IH (N = 93)	
	M	SD
1. Have the knowledge and ability to function up to international standards in hospitality and tourism management.	4.25	0.68
2. Have a well-developed ability to effectively use English in a university setting outside Thailand and/or in an international context.	4.18	0.66
3. Have the type of general knowledge to work effectively in an increasingly globalizing world, and to work and live harmoniously with people of diverse origins.	4.29	0.67
4. Can apply their knowledge with the competence and ability to enter either management level positions in the travel industry or continue their education at higher level domestically and internationally.	4.34	0.67
5. Have the humanity to work for the benefit of humankind and are able to think by themselves, are critical of the information they receive and able to relate what they learn to new contexts.	4.31	0.66
Average Score	4.27	0.67

 **Social Science Division**

- Social Science Program (SS)

Curriculum Objectives	Opinion Level	
	SS (N = 43)	
	M	SD
1. Possess an academic excellence. The Division aims to produce graduates with capacity and ability.	4.09	0.87
2. Take personal responsibility for their own studies/work. Only ones who work hard can achieve success.	4.23	0.97
3. Have an ability to think critically and independently for themselves. The Division encourages students to think, not to be passive learners.	4.47	0.80
Average Score	4.26	0.88

❖ Curriculum Structure

Table 3: Mean and Percentage of Graduates' Opinions on Curriculum Structure

2. Curriculum Structure	Opinion Level by Program 2017-2018																			
	Business Administration										Fine and Applied Arts								THM	
	BE (N = 49)		MF (N = 109)		MI (N = 141)		MK (N = 92)		IS (N = 7)		AP (N = 18)		FP (N = 30)		TP (N = 22)		CD (N = 17)		IH (N = 93)	
	M	SD	M	SD	M	SD	M	SD	M	SD	M	SD	M	SD	M	SD	M	SD	M	SD
2.1 The number of credits for General Education (GE) courses	3.35	0.97	3.01	0.94	3.28	0.92	3.40	0.84	3.57	0.53	3.17	0.71	3.37	0.67	3.23	0.97	3.18	1.01	3.81	0.83
2.2 The number of credits for GE courses in English Communication	3.84	0.83	3.69	0.86	3.89	0.78	3.90	0.80	4.00	0.58	3.39	0.85	3.47	0.51	3.50	0.67	3.47	1.12	4.18	0.75
2.3 The number of credits for GE courses in Natural Science	3.53	0.87	3.36	0.79	3.40	0.84	3.50	0.83	3.67	0.82	3.17	0.79	3.60	0.72	3.23	0.75	3.41	0.62	3.74	0.74
2.4 The number of credits for GE courses in Humanities	3.59	0.98	3.32	0.77	3.46	0.83	3.57	0.76	3.71	0.76	3.33	0.84	3.40	0.86	3.27	0.70	3.59	0.62	3.75	0.82
2.5 The number of credits for GE courses in Social Science	3.51	0.94	3.38	0.86	3.45	0.84	3.47	0.79	3.57	0.79	3.11	0.76	3.40	0.56	3.27	0.77	3.41	0.62	3.75	0.76
2.6 The number of credits for GE courses in Health & Physical Education	3.37	1.01	3.50	0.91	3.65	0.85	3.67	0.84	3.86	1.07	3.50	0.92	3.33	0.96	3.50	0.86	3.41	0.87	3.90	0.89
2.7 The number of credits for Core Courses	3.88	0.88	3.78	0.89	3.96	0.79	3.95	0.79	4.00	0.82	3.94	1.06	3.93	0.83	3.45	1.06	3.71	0.85	4.21	0.78
2.8 The number of credits for Required Major Courses	3.80	1.10	3.59	1.07	3.93	0.83	3.87	1.00	4.14	0.90	3.89	0.76	3.77	0.86	3.73	0.63	3.94	0.83	4.15	0.68
2.9 The number of credits for Elective Major Courses	3.76	0.99	3.62	0.87	3.82	0.75	3.80	0.89	4.00	0.82	3.11	1.02	3.67	0.66	3.59	0.67	3.59	0.80	4.00	0.86
2.10 The number of credits for Free Elective Courses	3.73	0.93	3.53	0.82	3.65	0.90	3.60	0.95	4.00	0.82	3.06	0.94	3.70	0.79	3.45	0.74	3.71	0.85	3.77	0.96
2.11 The number of total credits required for graduation	3.84	0.75	3.95	0.72	3.94	0.75	3.88	0.77	3.71	0.49	3.56	0.78	3.72	0.70	3.36	0.90	3.53	1.01	4.02	0.73
2.12 The overall curriculum structure	3.69	0.77	3.76	0.73	3.96	0.68	3.89	0.69	3.71	0.76	3.47	0.62	3.69	0.71	3.50	0.86	3.71	0.69	4.05	0.65
Average Score	3.66	0.92	3.54	0.85	3.70	0.81	3.71	0.83	3.83	0.76	3.39	0.84	3.59	0.74	3.42	0.80	3.55	0.82	3.95	0.79

Table 3: (Continued)

2. Curriculum Structure	Opinion Level by Program 2017-2018																		Overall MUIC (N = 709)		% of Satisfaction at level ≥ 4
	Science																SS				
	AM (N = 1)		BI (N = 30)		CH (N = 1)		CI (N = 26)		CS (N = 13)		EN (N = 6)		FS (N = 9)		PY (N = 2)		SS (N = 43)				
	M	SD	M	SD	M	SD	M	SD	M	SD	M	SD	M	SD	M	SD	M	SD	M	SD	
2.1 The number of credits for General Education (GE) courses	1.00	0.00	3.59	0.68	2.00	0.00	3.60	0.76	3.62	0.65	3.50	1.52	3.33	1.00	4.00	1.41	3.37	1.00	3.22	0.81	45.98%
2.2 The number of credits for GE courses in English Communication	5.00	0.00	3.73	0.87	5.00	0.00	3.81	0.85	3.46	0.78	3.50	1.38	3.78	1.09	4.00	1.41	3.84	0.90	3.87	0.79	67.42%
2.3 The number of credits for GE courses in Natural Science	4.00	0.00	3.45	0.91	5.00	0.00	3.85	0.73	3.69	0.63	4.00	1.26	3.56	1.01	4.00	1.41	3.19	1.05	3.67	0.78	48.94%
2.4 The number of credits for GE courses in Humanities	3.00	0.00	3.47	0.86	3.00	0.00	3.54	0.71	3.62	0.77	3.83	0.75	3.56	1.13	4.00	1.41	3.48	1.06	3.50	0.77	49.22%
2.5 The number of credits for GE courses in Social Science	2.00	0.00	3.23	1.10	3.00	0.00	3.56	0.82	3.77	0.83	3.00	1.41	3.67	1.12	4.00	1.41	3.72	0.98	3.36	0.81	48.38%
2.6 The number of credits for GE courses in Health & Physical Education	4.00	0.00	3.63	0.81	2.00	0.00	3.96	0.66	3.77	0.73	4.00	0.89	3.56	1.13	5.00	0.00	3.58	1.03	3.64	0.76	57.26%
2.7 The number of credits for Core Courses	3.00	0.00	3.70	0.88	5.00	0.00	4.12	0.71	4.00	0.82	4.33	1.03	4.33	0.50	5.00	0.00	3.98	0.91	4.02	0.71	73.91%
2.8 The number of credits for Required Major Courses	4.00	0.00	3.50	1.11	5.00	0.00	3.92	0.74	4.15	0.69	3.83	0.98	4.33	0.50	5.00	0.00	4.02	0.80	4.03	0.71	71.37%
2.9 The number of credits for Elective Major Courses	3.00	0.00	3.30	1.21	5.00	0.00	3.69	0.97	3.92	0.86	4.00	1.26	3.22	1.30	5.00	0.00	3.84	0.95	3.78	0.78	64.32%
2.10 The number of credits for Free Elective Courses	4.00	0.00	3.38	0.86	2.00	0.00	3.69	0.88	4.00	0.71	4.33	1.03	3.67	1.22	4.00	1.41	3.53	0.96	3.63	0.83	57.69%
2.11 The number of total credits required for graduation	4.00	0.00	3.79	0.68	4.00	0.00	3.73	0.92	3.85	0.69	4.00	0.89	3.78	0.44	4.50	0.71	3.93	0.83	3.84	0.67	69.11%
2.12 The overall curriculum structure	N/A	N/A	3.71	0.66	4.00	0.00	3.81	0.57	3.92	0.76	3.50	0.84	3.78	0.44	4.50	0.71	3.93	0.77	3.80	0.66	67.42%
Average Score	3.36	0.00	3.54	0.89	3.75	0.00	3.77	0.78	3.81	0.74	3.82	1.11	3.71	0.91	4.42	0.82	3.70	0.94	3.70	0.76	60.08%

MUIC Average Rating Score for Curriculum Structure

(Ranked from highest to lowest)

2. Curriculum Structure		M	SD
i.	The number of credits for Required Major Courses	4.03	0.71
ii.	The number of credits for Core Courses	4.02	0.71
iii.	The number of credits for GE courses in English Communication	3.87	0.79
iv.	The number of total credits required for graduation	3.84	0.67
v.	The overall curriculum structure	3.80	0.66
vi.	The number of credits for Elective Major Courses	3.78	0.78
vii.	The number of credits for GE courses in Natural Science	3.67	0.78
viii.	The number of credits for GE courses in Health & Physical Education	3.64	0.76
ix.	The number of credits for Free Elective Courses	3.63	0.83
x.	The number of credits for GE courses in Humanities	3.50	0.77
xi.	The number of credits for GE courses in Social Science	3.36	0.81
xii.	The number of credits for General Education (GE) courses	3.22	0.81
Average Score		3.70	0.76

Figure 4: Comparison of Mean Score of Curriculum Structure by Program

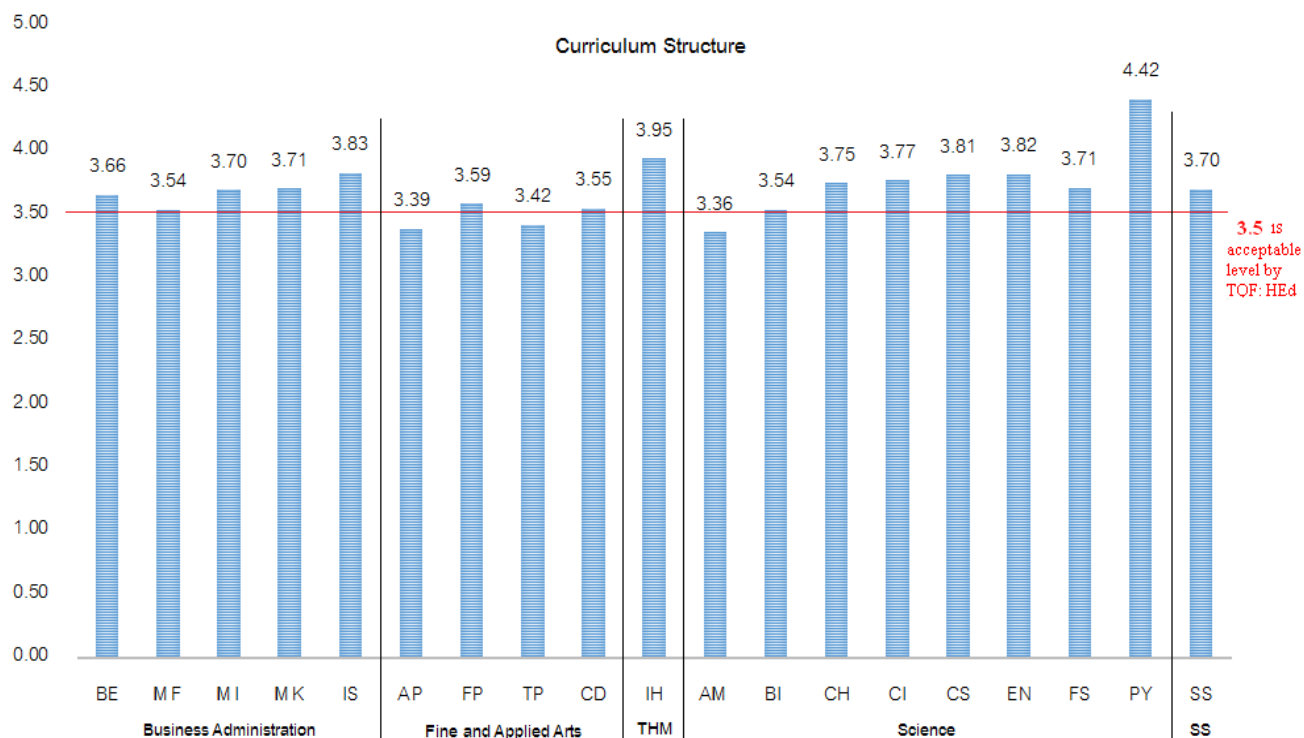


Figure 5: Comparison of Percentage of Graduates' Opinions on the Number of Credits of Curriculum Structure

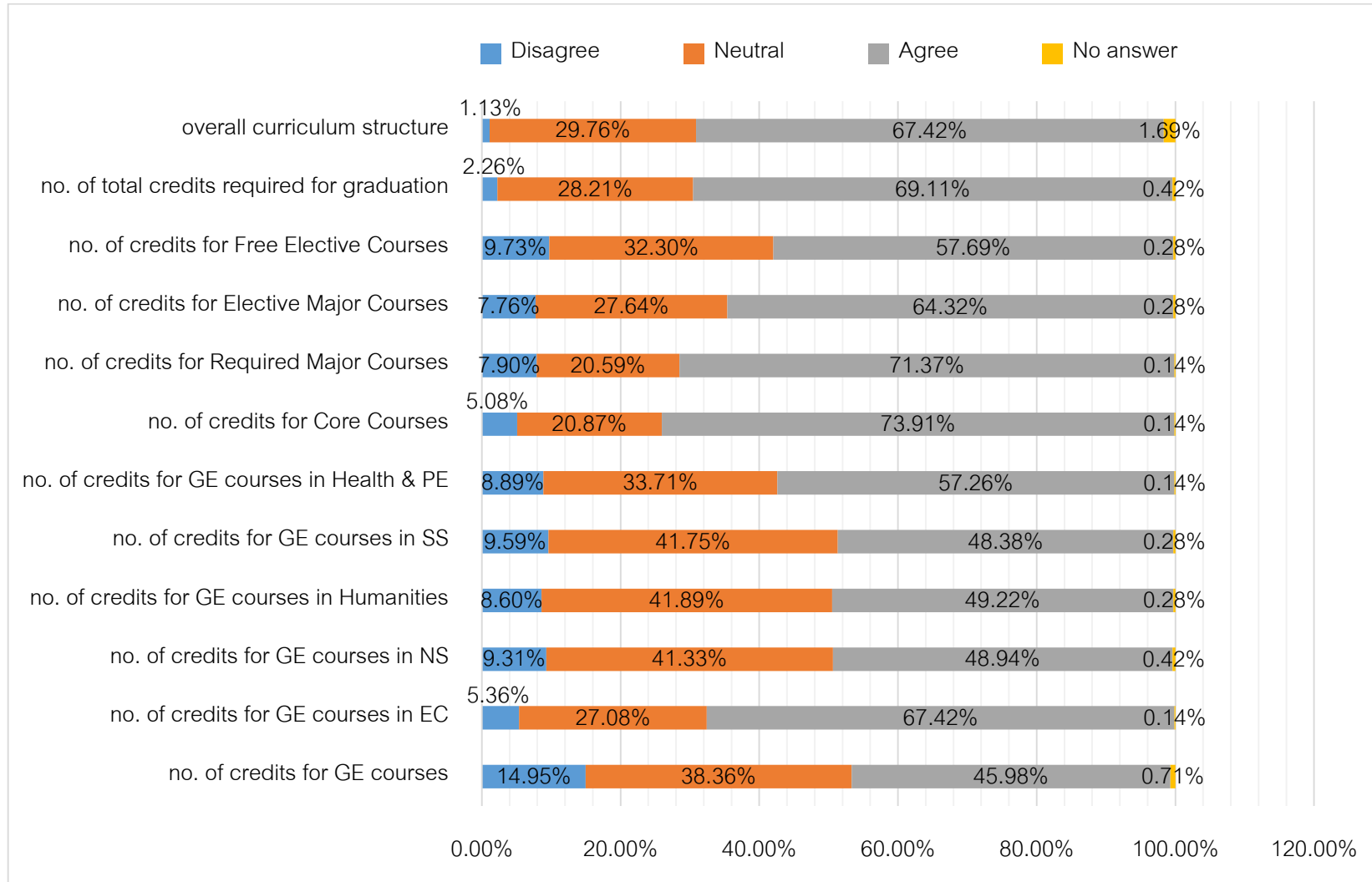
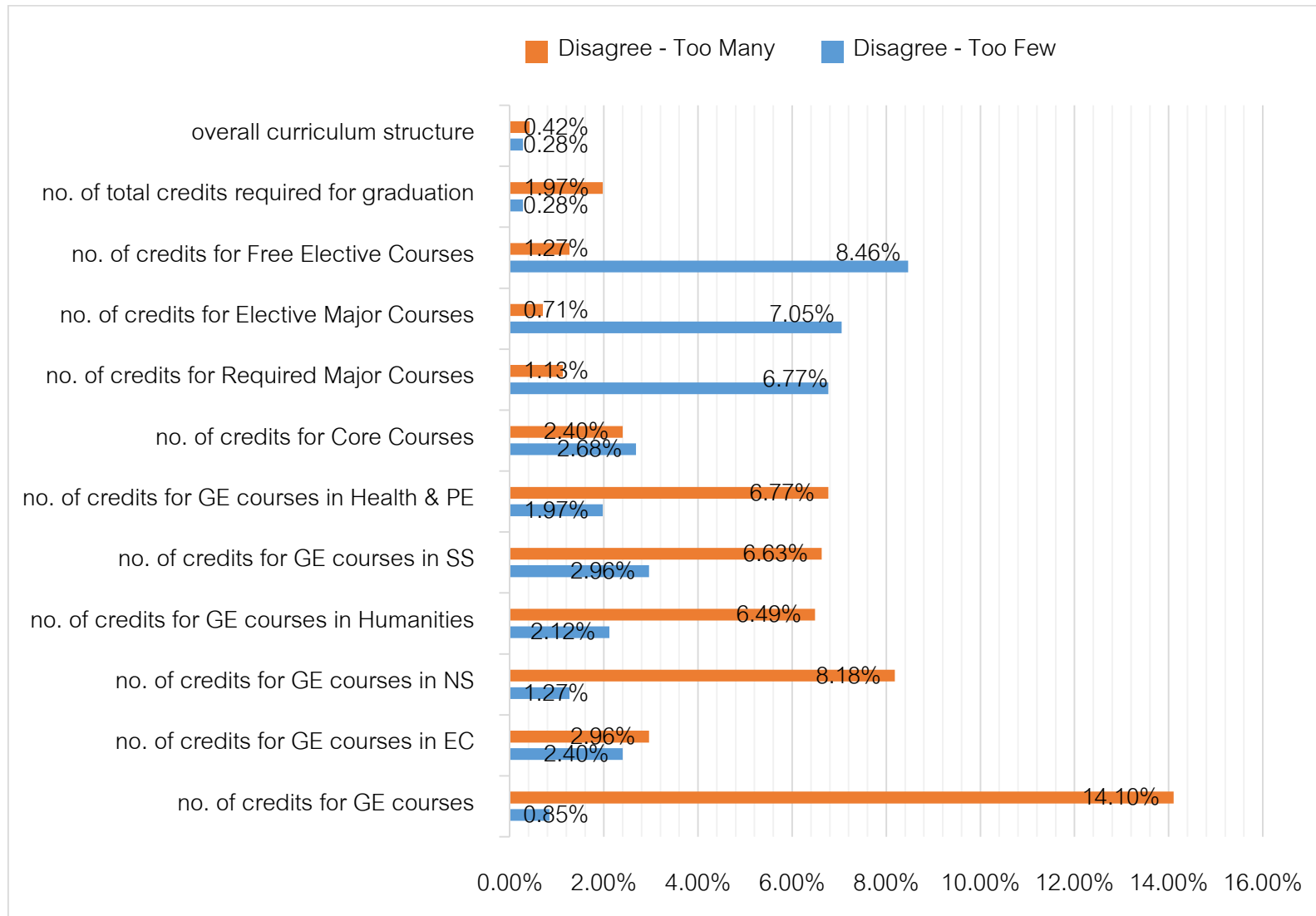


Figure 6: Comparison of Percentage of Graduates Who Disagree on the Number of Credits of Curriculum Structure



❖ Curriculum Content

Table 4: Mean and Percentage of Graduates' Opinions on Curriculum Content

3. Curriculum Content	Opinion Level by Program 2017-2018																			
	Business Administration										Fine and Applied Arts								THM	
	BE (N = 49)		MF (N = 109)		MI (N = 141)		MK (N = 92)		IS (N = 7)		AP (N = 18)		FP (N = 30)		TP (N = 22)		CD (N = 17)		IH (N = 93)	
	M	SD	M	SD	M	SD	M	SD	M	SD	M	SD	M	SD	M	SD	M	SD	M	SD
3.1 The course contents can be applied to your professional career.	3.73	0.76	3.78	0.64	3.91	0.69	3.99	0.60	4.14	0.69	3.94	0.64	3.70	0.75	3.64	0.58	4.06	0.75	4.23	0.61
3.2 The course contents are beneficial for society.	3.76	0.66	3.73	0.66	3.93	0.75	3.91	0.67	3.71	0.49	3.44	0.86	3.50	0.57	3.36	0.49	4.00	0.79	4.09	0.73
3.3 The course contents provide the basic knowledge for further education and innovation.	4.02	0.72	3.94	0.70	4.10	0.66	4.07	0.66	4.00	0.58	3.83	0.62	3.70	0.65	3.77	0.69	4.12	0.78	4.31	0.57
3.4 The course contents are up-to-date and suitable for current events and technological advancement.	3.84	0.85	3.83	0.74	4.01	0.74	3.95	0.79	3.43	0.53	3.28	0.89	3.50	0.73	3.32	0.72	3.88	0.78	4.11	0.65
3.5 The courses within the curriculum are structured with appropriate pre- and post- requisite subject sequence.	3.73	0.78	3.73	0.65	3.90	0.67	3.95	0.69	3.43	0.53	3.33	0.91	3.70	0.60	3.27	0.83	3.65	0.70	4.01	0.60
3.6 The course contents meet students' expectations and interests.	3.57	0.76	3.68	0.72	3.78	0.72	3.80	0.67	3.67	0.52	3.28	0.89	3.73	0.52	3.05	0.84	3.65	0.79	4.04	0.66
3.7 The course contents match the curriculum objectives.	3.92	0.68	3.83	0.67	3.97	0.66	4.01	0.56	3.71	0.76	3.89	0.58	3.87	0.57	3.27	0.55	3.81	0.75	4.13	0.58
Average Score	3.80	0.75	3.79	0.68	3.94	0.70	3.95	0.66	3.73	0.59	3.57	0.77	3.67	0.63	3.38	0.67	3.88	0.76	4.13	0.63

Table 4: (Continued)

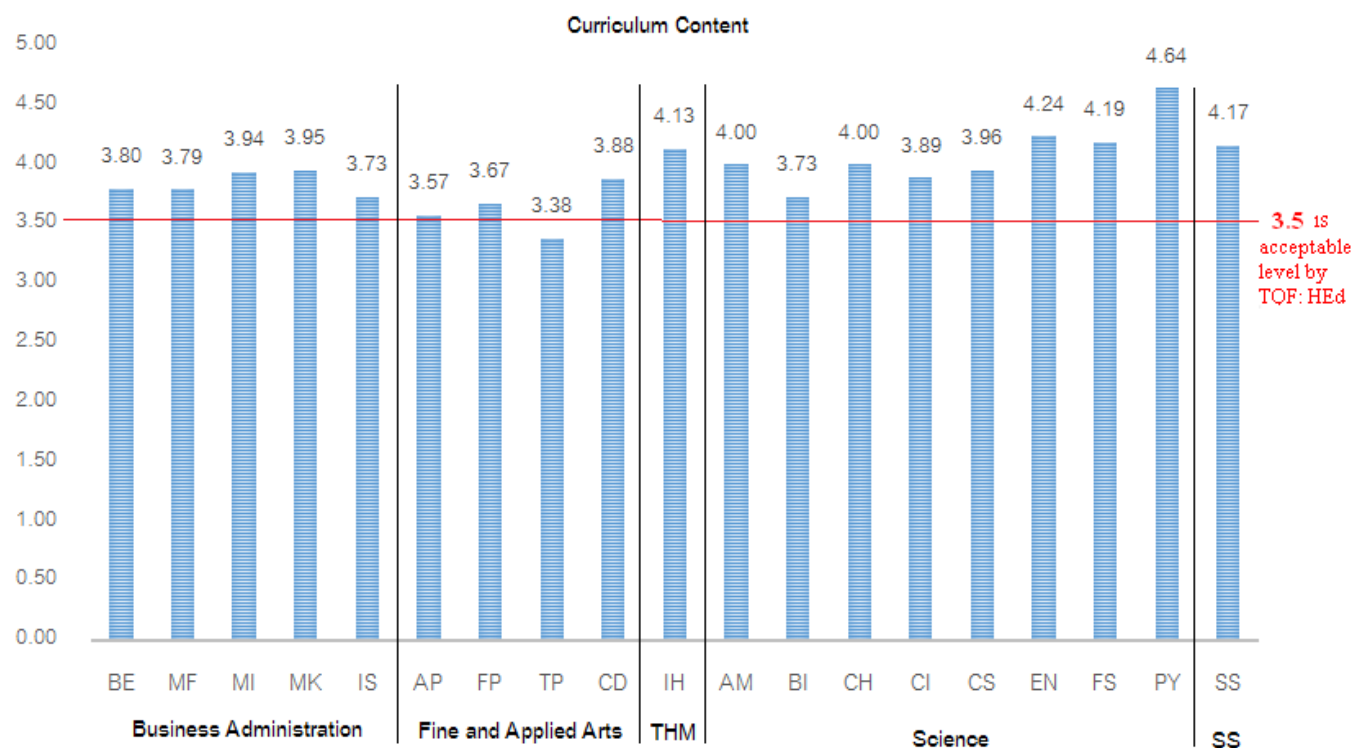
3. Curriculum Content	Opinion Level by Program 2017-2018																		Overall MUIC (N = 709)		% of Satisfaction at level ≥ 4
	Science																SS				
	AM (N = 1)		BI (N = 30)		CH (N = 1)		CI (N = 26)		CS (N = 13)		EN (N = 6)		FS (N = 9)		PY (N = 2)		SS (N = 43)		M	SD	
M	SD	M	SD	M	SD	M	SD	M	SD	M	SD	M	SD	M	SD	M	SD	M	SD	M	SD
3.1 The course contents can be applied to your professional career.	4.00	0.00	3.53	0.73	5.00	0.00	3.77	0.76	4.00	0.41	4.67	0.52	4.56	0.53	4.50	0.71	4.07	0.74	4.06	0.58	76.45%
3.2 The course contents are beneficial for society.	4.00	0.00	3.80	0.71	3.00	0.00	3.69	0.79	3.85	0.38	4.83	0.41	4.33	1.00	5.00	0.00	4.30	0.56	3.89	0.55	69.53%
3.3 The course contents provide the basic knowledge for further education and innovation.	4.00	0.00	4.10	0.66	4.00	0.00	4.15	0.67	4.08	0.76	4.50	0.55	4.44	0.53	5.00	0.00	4.30	0.60	4.12	0.55	81.81%
3.4 The course contents are up-to-date and suitable for current events and technological advancement.	4.00	0.00	3.97	0.67	4.00	0.00	3.88	0.82	4.15	0.55	4.17	0.98	4.00	0.50	5.00	0.00	4.07	0.74	3.91	0.61	70.94%
3.5 The courses within the curriculum are structured with appropriate pre- and post- requisite subject sequence.	4.00	0.00	3.62	0.78	4.00	0.00	3.92	0.63	3.69	0.85	3.50	1.05	3.78	0.83	4.00	1.41	4.09	0.61	3.73	0.69	69.82%
3.6 The course contents meet students' expectations and interests.	4.00	0.00	3.40	0.81	4.00	0.00	3.77	0.86	3.92	0.64	3.83	1.17	4.00	0.71	4.50	0.71	4.05	0.75	3.76	0.67	66.29%
3.7 The course contents match the curriculum objectives.	4.00	0.00	3.66	0.77	4.00	0.00	4.04	0.60	4.00	0.58	4.17	0.75	4.22	0.67	4.50	0.71	4.28	0.63	3.94	0.58	77.72%
Average Score	4.00	0.00	3.73	0.73	4.00	0.00	3.89	0.73	3.96	0.60	4.24	0.78	4.19	0.68	4.64	0.51	4.17	0.66	3.92	0.61	73.22%

MUIC Average Rating Score for Curriculum Content

(Ranked from highest to lowest)

3. Curriculum Content		M	SD
i.	The course contents provide the basic knowledge for further education and innovation.	4.12	0.55
ii.	The course contents can be applied to your professional career.	4.06	0.58
iii.	The course contents match the curriculum objectives.	3.94	0.58
iv.	The course contents are up-to-date and suitable for current events and technological advancement.	3.91	0.61
v.	The course contents are beneficial for society.	3.89	0.55
vi.	The course contents meet students' expectations and interests.	3.76	0.67
vii.	The courses within the curriculum are structured with appropriate pre- and post- requisite subject sequence.	3.73	0.69
Average Score		3.92	0.61

Figure 7: Comparison of Mean Scores of Curriculum Content by Program



❖ Student's Qualifications

Table 5: Mean and Percentage of the Graduates' Opinions on Student's Qualifications

4. The Student's Qualifications	Opinion Level by Program 2017-2018																			
	Business Administration										Fine and Applied Arts								THM	
	BE (N = 49)		MF (N = 109)		MI (N = 141)		MK (N = 92)		IS (N = 7)		AP (N = 18)		FP (N = 30)		TP (N = 22)		CD (N = 17)		IH (N = 93)	
	M	SD	M	SD	M	SD	M	SD	M	SD	M	SD	M	SD	M	SD	M	SD	M	SD
4.1 Graduate on a high school level or its equivalent.	4.15	0.82	4.18	0.76	4.24	0.73	4.13	0.74	4.00	0.82	4.06	1.06	3.90	0.66	3.82	0.66	4.29	0.77	4.37	0.60
4.2 Achieve an English test score: TOEFL iBT \geq 79; IELTS \geq 6.0; SAT \geq 1650 with the score in mathematics \geq 580	4.06	0.77	4.25	0.68	4.15	0.76	4.03	0.78	4.29	0.49	3.82	0.64	3.97	0.76	3.73	0.77	4.12	0.78	4.24	0.67
4.3 Pass the MUIC Entrance Examination	4.16	0.72	4.28	0.71	4.24	0.63	4.25	0.72	4.57	0.53	4.29	0.77	4.14	0.79	4.05	0.72	4.35	0.70	4.37	0.69
Average Score	4.12	0.77	4.24	0.72	4.21	0.71	4.14	0.75	4.29	0.61	4.06	0.82	4.00	0.74	3.86	0.72	4.25	0.75	4.32	0.65

Table 5: (Continued)

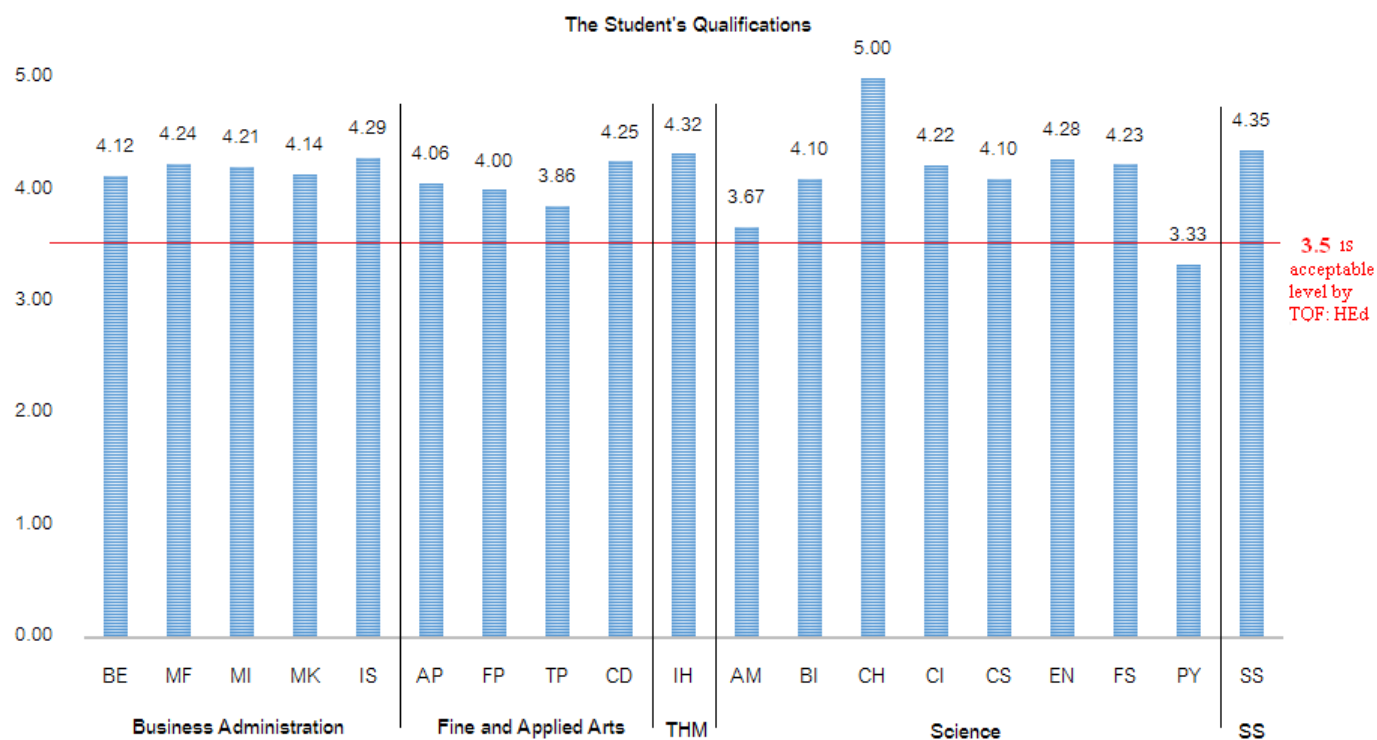
4. The Student's Qualifications	Opinion Level by Program 2017-2018																		Overall MUIC (N = 709)		% of Satisfaction at level \geq 4
	Science																SS		M	SD	
	AM (N = 1)		BI (N = 30)		CH (N = 1)		CI (N = 26)		CS (N = 13)		EN (N = 6)		FS (N = 9)		PY (N = 2)		SS (N = 43)				
	M	SD	M	SD	M	SD	M	SD	M	SD	M	SD	M	SD	M	SD	M	SD	M	SD	
4.1 Graduate on a high school level or its equivalent.	3.00	0.00	4.00	0.71	5.00	0.00	4.35	0.75	4.23	0.60	4.33	0.82	4.22	0.83	3.00	0.00	4.37	0.87	4.07	0.64	81.66%
4.2 Achieve an English test score: TOEFL iBT \geq 79; IELTS \geq 6.0; SAT \geq 1650 with the score in mathematics \geq 580	4.00	0.00	4.14	0.69	5.00	0.00	4.08	0.80	3.92	0.64	4.33	0.82	4.33	1.00	3.50	0.71	4.21	0.99	4.11	0.67	79.83%
4.3 Pass the MUIC Entrance Examination	4.00	0.00	4.17	0.85	5.00	0.00	4.23	0.71	4.15	0.55	4.17	0.98	4.13	0.64	3.50	0.71	4.48	0.71	4.23	0.64	84.77%
Average Score	3.67	0.00	4.10	0.75	5.00	0.00	4.22	0.75	4.10	0.60	4.28	0.87	4.23	0.82	3.33	0.47	4.35	0.86	4.13	0.65	82.09%

MUIC Average Rating Score for the Student's Qualification

[Ranked from highest to lowest]

4. The Student's Qualifications		M	SD
i.	Pass the MUIC Entrance Examination	4.23	0.64
ii.	Achieve an English test score: TOEFL iBT \geq 79; IELTS \geq 6.0; SAT \geq 1650 with the score in mathematics \geq 580	4.11	0.67
iii.	Graduate on a high school level or its equivalent.	4.07	0.64
Average Score		4.13	0.65

Figure 8: Comparison of Mean Scores of Student's Qualifications by Program



❖ Program's Lecturers

Table 6: Mean and Percentage of the Graduates' Opinions on Program's Lecturers

5. Program's Lecturers	Opinion Level by Program 2017-2018																			
	Business Administration										Fine and Applied Arts								THM	
	BE (N = 49)		MF (N = 109)		MI (N = 141)		MK (N = 92)		IS (N = 7)		AP (N = 18)		FP (N = 30)		TP (N = 22)		CD (N = 17)		IH (N = 93)	
	M	SD	M	SD	M	SD	M	SD	M	SD	M	SD	M	SD	M	SD	M	SD	M	SD
5.1 The number of lecturers is sufficient for the program.	3.47	0.71	3.55	0.69	3.67	0.71	3.84	0.68	3.00	0.58	3.00	0.84	3.10	1.03	2.86	0.99	3.65	0.86	3.84	0.80
5.2 Lecturers have knowledge/expertise/experience in the teaching field.	4.04	0.76	3.94	0.67	4.04	0.66	4.13	0.65	4.14	0.69	3.72	0.75	3.77	0.82	3.41	0.80	3.94	0.75	4.23	0.63
5.3 Lecturers can convey knowledge/experience to students and motivate them to become more active and interested in studying.	3.86	0.71	3.68	0.73	3.92	0.72	4.08	0.65	4.00	0.82	3.56	1.04	3.50	0.82	3.59	0.67	3.76	1.03	4.22	0.62
5.4 Lecturers are well versed in innovative changes and can integrate a variety of concepts.	3.78	0.69	3.75	0.73	3.90	0.67	4.03	0.64	4.00	0.58	3.33	0.77	3.67	0.71	3.50	0.60	4.06	0.83	4.13	0.61
5.5 Lecturers give students an opportunity to express opinions.	4.00	0.74	4.07	0.70	4.14	0.69	4.11	0.73	4.43	0.53	4.17	0.86	4.00	0.74	3.73	0.63	4.06	0.83	4.30	0.67
5.6 Lecturers have morals and a commitment to teaching.	3.98	0.80	4.01	0.66	4.04	0.70	4.13	0.67	4.29	0.49	3.67	1.08	3.93	0.78	3.59	0.50	3.65	1.06	4.20	0.68
5.7 Lecturers use proper materials, equipment and techniques in teaching.	3.86	0.79	3.95	0.70	3.96	0.71	4.16	0.63	3.71	0.49	3.44	0.92	3.70	0.70	3.50	0.67	3.82	0.64	4.14	0.64
Average Score	3.85	0.74	3.85	0.70	3.95	0.70	4.07	0.66	3.94	0.60	3.56	0.89	3.67	0.80	3.45	0.69	3.85	0.86	4.15	0.66

Table 6: (Continued)

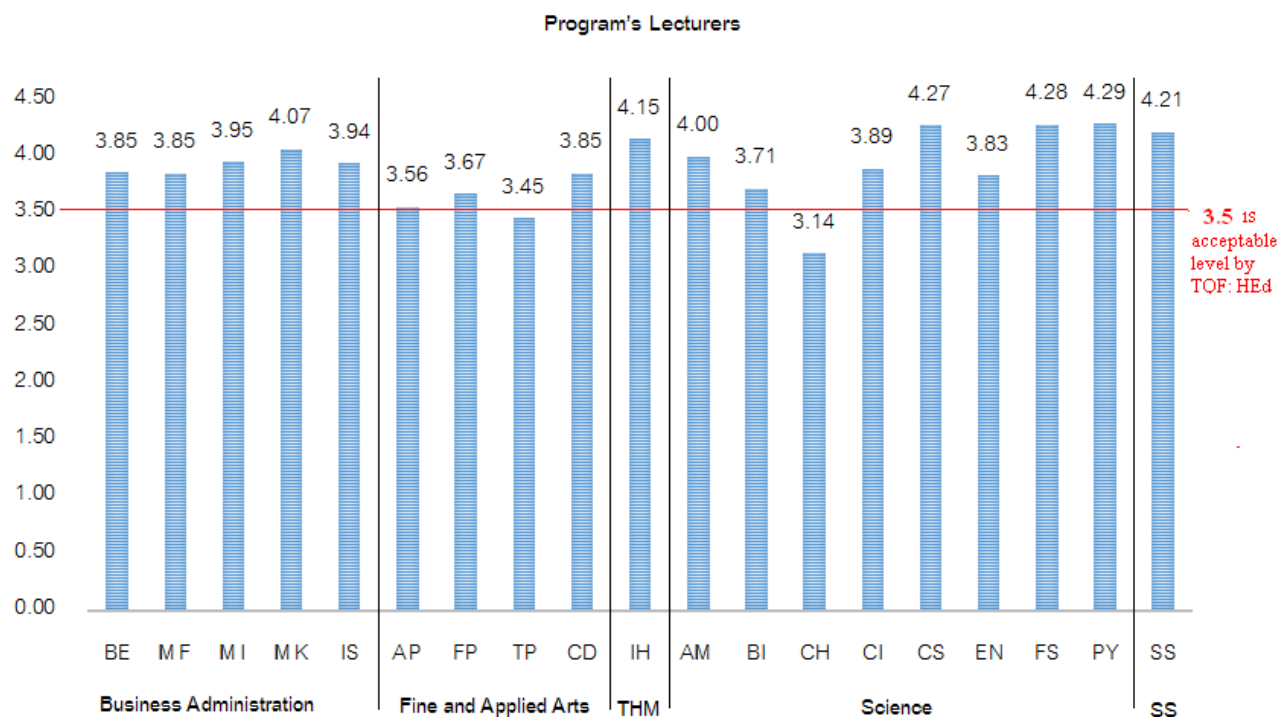
5. Program's Lecturers	Opinion Level by Program 2017-2018																		Overall MUIIC (N = 709)		% of Satisfaction at level ≥ 4
	Science																SS				
	AM (N = 1)		BI (N = 30)		CH (N = 1)		CI (N = 26)		CS (N = 13)		EN (N = 6)		FS (N = 9)		PY (N = 2)		SS (N = 43)		M	SD	
M	SD	M	SD	M	SD	M	SD	M	SD	M	SD	M	SD	M	SD	M	SD	M	SD	M	SD
5.1 The number of lecturers is sufficient for the program.	4.00	0.00	3.17	0.83	3.00	0.00	3.65	0.63	3.46	0.88	2.80	1.48	3.40	0.88	3.00	1.41	3.58	1.12	3.36	0.80	54.44%
5.2 Lecturers have knowledge/expertise/experience in the teaching field.	4.00	0.00	3.87	0.68	5.00	0.00	3.92	0.84	4.46	0.66	3.80	1.30	4.56	0.73	4.00	1.41	4.58	0.54	4.05	0.70	79.41%
5.3 Lecturers can convey knowledge/experience to students and motivate them to become more active and interested in studying.	4.00	0.00	3.57	0.90	3.00	0.00	3.50	0.95	4.31	0.63	3.60	1.14	4.33	0.87	5.00	0.00	4.23	0.84	3.86	0.69	71.93%
5.4 Lecturers are well versed in innovative changes and can integrate a variety of concepts.	4.00	0.00	3.67	0.66	2.00	0.00	3.88	0.77	4.46	0.52	3.80	1.30	4.44	0.73	4.50	0.71	4.16	0.65	3.83	0.64	72.36%
5.5 Lecturers give students an opportunity to express opinions.	4.00	0.00	4.00	0.91	3.00	0.00	4.24	0.72	4.38	0.65	4.60	0.55	4.56	0.73	5.00	0.00	4.58	0.63	4.15	0.60	81.52%
5.6 Lecturers have morals and a commitment to teaching.	4.00	0.00	3.93	0.74	3.00	0.00	4.00	0.82	4.46	0.66	4.20	0.84	4.44	0.73	4.50	0.71	4.33	0.52	4.00	0.65	78.56%
5.7 Lecturers use proper materials, equipment and techniques in teaching.	4.00	0.00	3.80	0.85	3.00	0.00	4.04	0.73	4.38	0.51	4.00	1.41	4.22	0.67	4.00	1.41	4.02	0.77	3.87	0.70	75.60%
Average Score	4.00	0.00	3.71	0.80	3.14	0.00	3.89	0.78	4.27	0.64	3.83	1.15	4.28	0.76	4.29	0.81	4.21	0.72	3.88	0.68	73.40%

MUIC Average Rating Score for Program's Lecturers

[Ranked from highest to lowest]

5. Program's Lecturers	M	SD
i. Lecturers give students an opportunity to express opinions.	4.15	0.60
ii. Lecturers have knowledge/expertise/experience in the teaching field.	4.05	0.70
iii. Lecturers have morals and a commitment to teaching.	4.00	0.65
iv. Lecturers use proper materials, equipment and techniques in teaching.	3.87	0.70
v. Lecturers can convey knowledge/experience to students and motivate them to become more active and interested in studying.	3.86	0.69
vi. Lecturers are well versed in innovative changes and can integrate a variety of concepts.	3.83	0.64
vii. The number of lecturers is sufficient for the program.	3.36	0.80
Average Score	3.88	0.68

Figure 9: Comparison of Mean Score of Program's Lecturers by Program



❖ Advisor's Qualifications

Table 7: Mean and Percentage of the Graduates' Opinions on Advisor's Qualifications

6. Advisor's Qualifications	Opinion Level by Program 2017-2018																			
	Business Administration										Fine and Applied Arts								THM	
	BE (N = 49)		MF (N = 109)		MI (N = 141)		MK (N = 92)		IS (N = 7)		AP (N = 18)		FP (N = 30)		TP (N = 22)		CD (N = 17)		IH (N = 93)	
	M	SD	M	SD	M	SD	M	SD	M	SD	M	SD	M	SD	M	SD	M	SD	M	SD
6.1 The system designed for advisors to meet with students is appropriate.	3.63	0.78	3.36	0.87	3.55	0.87	3.53	0.80	3.43	0.79	3.44	0.70	3.80	0.85	3.36	0.58	3.76	0.75	3.72	0.80
6.2 Advisors closely follow up on students' learning outcomes.	3.61	0.81	3.27	0.90	3.40	0.87	3.50	0.86	2.86	0.90	3.67	1.03	4.00	0.83	3.32	0.84	3.88	0.78	3.61	0.78
6.3 Advisors give students assistance or advice on study plans.	3.55	0.91	3.30	0.98	3.49	0.90	3.62	0.86	3.00	1.00	3.61	1.04	3.97	0.81	3.32	0.84	3.88	0.78	3.84	0.81
6.4 Advisors suggest opportunities for further studies or careers.	3.61	0.81	3.33	0.95	3.38	0.93	3.57	0.94	3.14	1.21	3.72	1.02	3.70	0.84	3.27	0.83	3.94	0.75	3.73	0.84
Average Score	3.60	0.83	3.32	0.92	3.46	0.89	3.55	0.87	3.11	0.98	3.61	0.95	3.87	0.83	3.32	0.77	3.87	0.77	3.73	0.81

Table 7: (Continued)

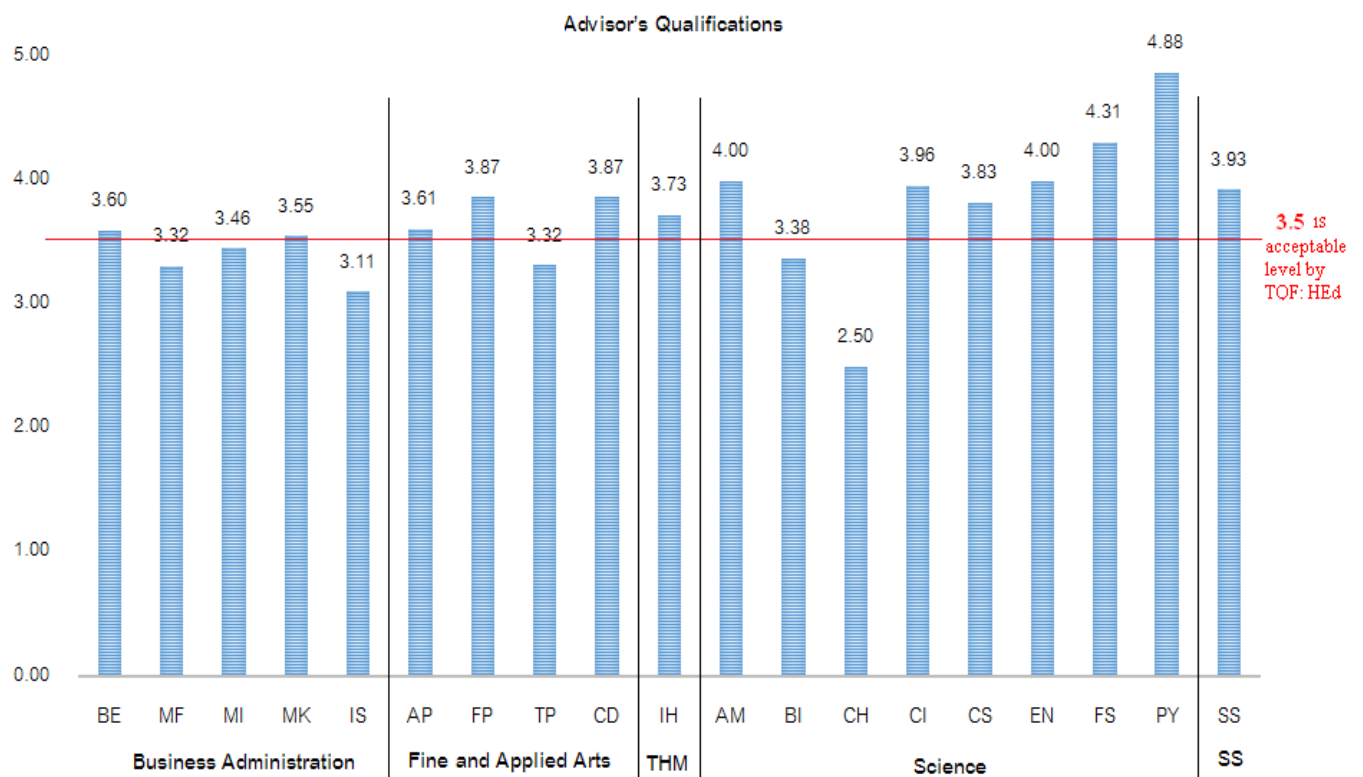
6. Advisor's Qualifications	Opinion Level by Program 2017-2018																		Overall MUIC (N = 709)		% of Satisfaction at level ≥ 4
	Science															SS					
	AM (N = 1)		BI (N = 30)		CH (N = 1)		CI (N = 26)		CS (N = 13)		EN (N = 6)		FS (N = 9)		PY (N = 2)		SS (N = 43)				
	M	SD	M	SD	M	SD	M	SD	M	SD	M	SD	M	SD	M	SD	M	SD	M	SD	
6.1 The system designed for advisors to meet with students is appropriate.	4.00	0.00	3.37	0.72	3.00	0.00	3.80	0.65	3.77	0.73	4.17	0.98	3.89	1.05	4.50	0.71	3.86	0.91	3.67	0.71	51.06%
6.2 Advisors closely follow up on students' learning outcomes.	4.00	0.00	3.23	0.97	2.00	0.00	3.96	0.89	3.85	0.80	3.67	1.21	4.56	0.73	5.00	0.00	3.84	1.04	3.63	0.75	48.10%
6.3 Advisors give students assistance or advice on study plans.	4.00	0.00	3.50	0.82	2.00	0.00	4.08	0.81	3.92	1.04	4.00	1.26	4.44	1.01	5.00	0.00	4.07	0.94	3.70	0.78	54.72%
6.4 Advisors suggest opportunities for further studies or careers.	4.00	0.00	3.40	0.81	3.00	0.00	4.00	0.71	3.77	1.09	4.17	1.33	4.33	1.00	5.00	0.00	3.95	0.97	3.73	0.79	52.05%
Average Score	4.00	0.00	3.38	0.83	2.50	0.00	3.96	0.76	3.83	0.91	4.00	1.20	4.31	0.95	4.88	0.18	3.93	0.97	3.68	0.76	51.48%

MUIC Average Rating Score for Advisor's Qualifications

[Ranked from highest to lowest]

6. Advisor's Qualifications	M	SD
i. Advisors suggest opportunities for further studies or careers.	3.73	0.79
ii. Advisors give students assistance or advice on study plans.	3.70	0.78
iii. The system designed for advisors to meet with students is appropriate.	3.67	0.71
iv. Advisors closely follow up on students' learning outcomes.	3.63	0.75
Average Score	3.68	0.76

Figure 10: Comparison of Mean Scores of Advisor's Qualifications by Program



❖ Support Services

Table 8: Mean and Percentage of the Graduates' Opinions on Support Services (Educational Materials, textbooks, Buildings, and Sites)

7. Support Services	Opinion Level by Program 2017-2018																			
	Business Administration										Fine and Applied Arts								THM	
	BE (N = 49)		MF (N = 109)		MI (N = 141)		MK (N = 92)		IS (N = 7)		AP (N = 18)		FP (N = 30)		TP (N = 22)		CD (N = 17)		IH (N = 93)	
	M	SD	M	SD	M	SD	M	SD	M	SD	M	SD	M	SD	M	SD	M	SD	M	SD
7.1 Course materials match the subject's content and are up-to-date.	3.73	0.70	3.74	0.67	3.78	0.61	3.87	0.68	3.57	0.53	3.17	0.79	3.37	0.61	3.27	0.83	3.71	0.77	4.04	0.59
7.2 Support staff is knowledgeable and give suggestions appropriately.	3.59	0.70	3.72	0.65	3.72	0.72	3.71	0.82	3.00	1.00	3.39	0.61	3.57	0.73	3.64	0.66	3.76	0.75	4.02	0.61
7.3 Support staff is friendly and committed to service.	3.61	0.73	3.62	0.83	3.62	0.71	3.58	0.95	3.29	1.11	3.67	0.69	3.77	0.73	3.59	0.80	3.94	0.90	3.72	0.76
7.4 Information is announced to the students in a timely manner.	3.76	0.72	3.63	0.73	3.70	0.70	3.78	0.69	3.43	0.53	3.39	0.92	3.73	0.69	3.55	0.60	3.82	0.81	3.90	0.63
7.5 Information about service procedures is thoroughly provided for the students.	3.86	0.68	3.68	0.69	3.74	0.73	3.72	0.65	3.29	0.49	3.28	0.75	3.73	0.64	3.52	0.60	3.82	0.81	3.87	0.59
7.6 Service request forms are accessible for students.	3.90	0.71	3.90	0.67	3.89	0.71	3.87	0.70	4.00	0.82	3.44	0.86	3.67	0.92	3.64	0.66	3.88	0.60	4.04	0.67
7.7 Audio-visual equipment is adequately provided in classrooms.	3.88	0.78	3.79	0.72	3.91	0.67	3.85	0.67	3.71	0.49	3.56	0.70	3.53	0.94	3.50	0.60	3.59	0.80	3.99	0.68
7.8 The ratio of computers available to students is appropriate.	3.59	0.89	3.64	0.71	3.77	0.79	3.73	0.80	3.71	0.76	3.50	0.92	3.53	0.86	3.41	0.73	3.71	0.69	3.89	0.79
7.9 Textbooks, documents and other media in the library are up-to-date and adequate.	3.61	0.89	3.70	0.79	3.69	0.76	3.78	0.68	3.86	0.69	3.22	0.65	3.37	0.76	3.50	0.67	3.59	0.62	3.88	0.82
7.10 Educational materials and lab equipment available to students are adequate.	3.71	0.76	3.71	0.77	3.79	0.67	3.79	0.67	3.71	0.49	3.33	0.91	3.37	0.89	3.45	0.80	3.53	0.80	3.82	0.71
7.11 Learning resources and online research databases available to students are adequate.	3.86	0.84	3.71	0.81	3.87	0.70	3.84	0.68	3.57	0.79	3.11	0.76	3.53	0.63	3.50	0.51	3.65	0.61	3.91	0.72
7.12 Labs and internship facilities suit the study program and subjects taught in the program.	3.86	0.89	3.74	0.77	3.82	0.75	3.87	0.63	3.57	0.79	3.33	1.03	3.33	0.61	3.59	0.67	3.53	0.62	4.09	0.67
Average Score	3.75	0.77	3.71	0.74	3.77	0.71	3.78	0.72	3.56	0.71	3.37	0.80	3.54	0.75	3.51	0.68	3.71	0.73	3.93	0.69

Table 8: (Continued)

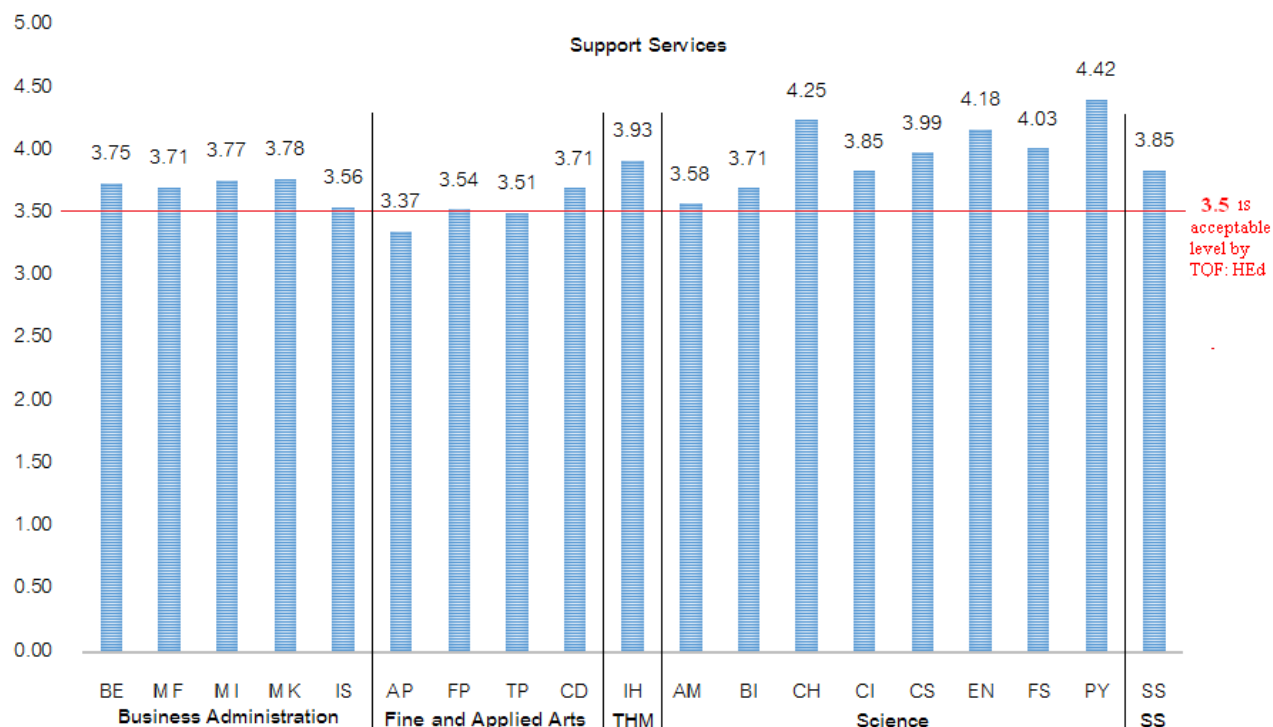
7. Support Services	Opinion Level by Program 2017-2018																		Overall MUIC (N = 709)		% of Satisfaction at level ≥ 4
	Science																SS				
	AM (N = 1)		BI (N = 30)		CH (N = 1)		CI (N = 26)		CS (N = 13)		EN (N = 6)		FS (N = 9)		PY (N = 2)		SS (N = 43)		M	SD	
M	SD	M	SD	M	SD	M	SD	M	SD	M	SD	M	SD	M	SD	M	SD	M	SD	M	SD
7.1 Course materials match the subject's content and are up-to-date.	4.00	0.00	3.80	0.61	5.00	0.00	3.64	0.81	4.23	0.73	3.83	0.75	4.11	0.93	5.00	0.00	3.98	0.67	3.88	0.58	66.57%
7.2 Support staff is knowledgeable and give suggestions appropriately.	4.00	0.00	3.77	0.63	5.00	0.00	4.04	0.84	4.15	0.69	4.33	0.82	4.11	0.78	4.00	1.41	3.98	0.71	3.86	0.69	65.59%
7.3 Support staff is friendly and committed to service.	4.00	0.00	3.93	0.64	4.00	0.00	4.12	0.83	4.31	0.63	4.33	1.03	4.33	0.71	5.00	0.00	3.86	0.71	3.91	0.67	59.52%
7.4 Information is announced to the students in a timely manner.	4.00	0.00	3.57	0.94	4.00	0.00	3.88	0.78	4.15	0.55	3.83	1.17	3.78	1.09	5.00	0.00	3.74	0.88	3.83	0.65	63.61%
7.5 Information about service procedures is thoroughly provided for the students.	4.00	0.00	3.47	0.68	4.00	0.00	3.96	0.79	4.00	0.82	3.83	0.75	4.00	0.71	4.50	0.71	3.74	0.73	3.79	0.62	63.47%
7.6 Service request forms are accessible for students.	4.00	0.00	3.97	0.61	3.00	0.00	4.16	0.69	4.08	0.86	4.33	0.82	4.11	0.78	4.50	0.71	4.00	0.72	3.91	0.66	72.36%
7.7 Audio-visual equipment is adequately provided in classrooms.	4.00	0.00	3.93	0.74	4.00	0.00	3.80	0.76	3.77	0.60	4.33	1.03	3.89	0.93	5.00	0.00	3.95	0.65	3.89	0.62	68.55%
7.8 The ratio of computers available to students is appropriate.	3.00	0.00	3.87	0.68	4.00	0.00	3.60	1.00	4.08	0.64	3.67	0.82	4.22	0.67	5.00	0.00	3.71	0.71	3.77	0.66	61.64%
7.9 Textbooks, documents and other media in the library are up-to-date and adequate.	3.00	0.00	3.83	0.65	4.00	0.00	3.60	0.76	3.77	0.60	4.17	0.41	3.89	0.60	3.00	1.41	3.70	0.83	3.64	0.66	60.51%
7.10 Educational materials and lab equipment available to students are adequate.	3.00	0.00	3.50	0.78	4.00	0.00	3.68	0.85	3.69	0.75	4.50	0.55	3.89	0.93	3.50	2.12	3.77	0.72	3.67	0.75	62.76%
7.11 Learning resources and online research databases available to students are adequate.	3.00	0.00	3.77	0.82	5.00	0.00	3.84	0.75	3.77	0.83	4.83	0.41	4.00	0.71	4.00	1.41	4.00	0.85	3.82	0.67	66.43%
7.12 Labs and internship facilities suit the study program and subjects taught in the program.	3.00	0.00	3.10	0.99	5.00	0.00	3.84	0.75	3.92	0.76	4.17	0.75	4.00	0.87	4.50	0.71	3.74	0.82	3.79	0.69	65.30%
Average Score	3.58	0.00	3.71	0.73	4.25	0.00	3.85	0.80	3.99	0.70	4.18	0.78	4.03	0.80	4.42	0.71	3.85	0.75	3.81	0.66	64.69%

MUIC Average Rating Score for Support Services

[Ranked from highest to lowest]

7. Support Services	M	SD
i. Support staff is friendly and committed to service.	3.91	0.67
ii. Service request forms are accessible for students.	3.91	0.66
iii. Audio-visual equipment is adequately provided in classrooms.	3.89	0.62
iv. Course materials match the subject's content and are up-to-date.	3.88	0.58
v. Support staff is knowledgeable and give suggestions appropriately.	3.86	0.69
vi. Information is announced to the students in a timely manner.	3.83	0.65
vii. Learning resources and online research databases available to students are adequate.	3.82	0.67
viii. Information about service procedures is thoroughly provided for the students.	3.79	0.62
ix. Labs and internship facilities suit the study program and subjects taught in the program.	3.79	0.69
x. The ratio of computers available to students is appropriate.	3.77	0.66
xi. Educational materials and lab equipment available to students are adequate.	3.67	0.75
xii. Textbooks, documents and other media in the library are up-to-date and adequate.	3.64	0.66
Average Score	3.81	0.66

Figure 11: Comparison of Mean Scores of Support Services by Program



❖ Course Management

Table 9: Mean and Percentage of the Graduates' Opinions on Course Management

8. Course Management	Opinion Level by Program 2017-2018																			
	Business Administration										Fine and Applied Arts								THM	
	BE (N = 49)		MF (N = 109)		MI (N = 141)		MK (N = 92)		IS (N = 7)		AP (N = 18)		FP (N = 30)		TP (N = 22)		CD (N = 17)		IH (N = 93)	
	M	SD	M	SD	M	SD	M	SD	M	SD	M	SD	M	SD	M	SD	M	SD	M	SD
8.1 Courses taught in the program help students to link theories with practice.	3.76	0.80	3.60	0.68	3.85	0.71	3.83	0.59	3.57	0.79	3.61	0.70	3.90	0.71	3.43	0.75	4.12	0.70	3.99	0.63
8.2 Courses encourage students to develop skills that are necessary for future employment.	3.80	0.64	3.77	0.70	3.92	0.71	3.96	0.71	3.86	0.69	3.67	0.77	3.83	0.70	3.52	0.60	4.24	0.75	4.15	0.62
8.3 Courses encourage students to think critically and to make decisions in a systematic manner.	3.92	0.81	3.91	0.74	4.00	0.71	4.02	0.66	4.00	0.82	3.44	0.78	3.80	0.61	3.57	0.75	4.12	0.93	4.22	0.59
8.4 Courses encourage students to do research and to seek knowledge by themselves.	3.82	0.81	3.85	0.72	4.01	0.72	4.04	0.68	4.29	0.76	4.06	0.87	3.87	0.78	3.57	0.75	4.24	0.83	4.28	0.60
8.5 Courses encourage students to engage in teamwork.	3.94	0.77	4.03	0.74	4.18	0.73	4.09	0.72	4.43	0.79	3.89	0.90	4.00	0.83	3.81	0.60	4.06	0.90	4.40	0.61
8.6 Media and technologies are provided to support student's understanding of the course content.	3.92	0.67	3.86	0.74	3.98	0.71	3.92	0.65	3.86	0.69	3.33	1.03	3.77	0.68	3.38	0.50	4.00	0.79	4.14	0.64
8.7 Various learning resources are made available to students.	3.80	0.71	3.72	0.71	3.89	0.65	3.91	0.66	3.86	0.69	3.28	0.89	3.73	0.64	3.52	0.68	3.94	0.75	4.10	0.64
8.8 Courses encourage students to participate in various extra-curricular activities in order to develop themselves and society.	3.80	0.71	3.78	0.74	3.74	0.78	3.90	0.71	3.57	0.53	3.61	0.70	3.77	0.82	3.57	0.75	3.88	0.78	4.03	0.65
8.9 Courses incorporate moral and professional ethics.	4.02	0.72	3.83	0.80	3.91	0.71	3.87	0.68	4.29	0.95	3.44	0.98	3.87	0.68	3.62	0.67	3.88	0.86	4.23	0.61
Average Score	3.86	0.74	3.82	0.73	3.94	0.71	3.95	0.67	3.97	0.74	3.59	0.85	3.84	0.72	3.56	0.67	4.05	0.81	4.17	0.62

Table 9: (Continued)

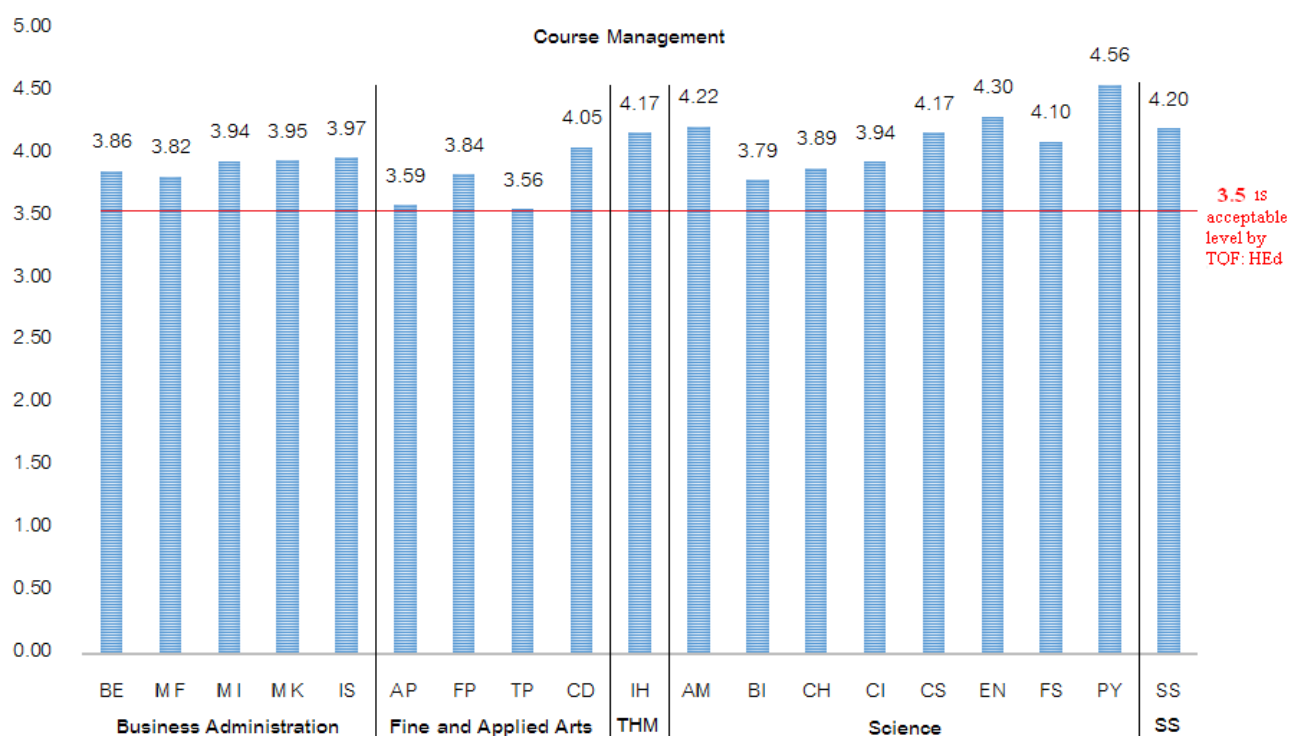
8. Course Management	Opinion Level by Program 2017-2018																		Overall MUIC (N = 709)		% of Satisfaction at level ≥ 4
	Science																SS		M	SD	
	AM (N = 1)		BI (N = 30)		CH (N = 1)		CI (N = 26)		CS (N = 13)		EN (N = 6)		FS (N = 9)		PY (N = 2)		SS (N = 43)				
M	SD	M	SD	M	SD	M	SD	M	SD	M	SD	M	SD	M	SD	M	SD	M	SD		
8.1 Courses taught in the program help students to link theories with practice.	4.00	0.00	3.57	0.68	4.00	0.00	3.80	0.65	3.92	0.64	4.17	0.98	4.11	0.60	5.00	0.00	4.30	0.56	3.90	0.59	70.80%
8.2 Courses encourage students to develop skills that are necessary for future employment.	4.00	0.00	3.60	0.62	4.00	0.00	4.00	0.71	4.38	0.51	4.17	0.75	4.00	0.50	5.00	0.00	4.30	0.56	3.99	0.55	74.89%
8.3 Courses encourage students to think critically and to make decisions in a systematic manner.	5.00	0.00	3.67	0.61	5.00	0.00	4.04	0.84	4.46	0.66	4.17	0.41	4.33	0.71	4.50	0.71	4.51	0.59	4.12	0.63	76.87%
8.4 Courses encourage students to do research and to seek knowledge by themselves.	5.00	0.00	4.10	0.71	5.00	0.00	4.04	0.73	4.45	0.66	4.50	0.55	4.11	0.78	4.00	1.41	4.51	0.67	4.18	0.69	77.29%
8.5 Courses encourage students to engage in teamwork.	4.00	0.00	3.97	0.61	4.00	0.00	4.04	0.84	4.31	0.85	4.33	0.82	3.89	0.78	5.00	0.00	4.05	0.69	4.13	0.64	79.27%
8.6 Media and technologies are provided to support student's understanding of the course content.	4.00	0.00	3.97	0.61	3.00	0.00	3.88	0.73	3.92	0.76	4.50	0.84	4.22	0.67	4.00	1.41	4.00	0.69	3.87	0.67	72.92%
8.7 Various learning resources are made available to students.	4.00	0.00	3.90	0.66	4.00	0.00	3.92	0.57	4.08	0.76	4.50	0.84	4.11	0.60	4.50	0.71	4.09	0.57	3.93	0.62	71.93%
8.8 Courses encourage students to participate in various extra-curricular activities in order to develop themselves and society.	4.00	0.00	3.52	0.63	3.00	0.00	3.80	0.71	3.92	0.64	4.00	0.89	4.00	0.50	4.00	1.41	3.86	0.71	3.77	0.67	65.30%
8.9 Courses incorporate moral and professional ethics.	4.00	0.00	3.83	0.65	3.00	0.00	3.92	0.76	4.08	0.76	4.33	0.82	4.11	0.60	5.00	0.00	4.21	0.60	3.96	0.62	72.78%
Average Score	4.22	0.00	3.79	0.64	3.89	0.00	3.94	0.73	4.17	0.69	4.30	0.77	4.10	0.64	4.56	0.63	4.20	0.63	3.98	0.63	73.56%

MUIC Average Rating Score for Course Management

[Ranked from highest to lowest]

8. Course Management	<i>M</i>	<i>SD</i>
i. Courses encourage students to do research and to seek knowledge by themselves.	4.18	0.69
ii. Courses encourage students to engage in teamwork.	4.13	0.64
iii. Courses encourage students to think critically and to make decisions in a systematic manner.	4.12	0.63
iv. Courses encourage students to develop skills that are necessary for future employment.	3.99	0.55
v. Courses incorporate moral and professional ethics.	3.96	0.62
vi. Various learning resources are made available to students.	3.93	0.62
vii. Courses taught in the program help students to link theories with practice.	3.90	0.59
viii. Media and technologies are provided to support student's understanding of the course content.	3.87	0.67
ix. Courses encourage students to participate in various extra-curricular activities in order to develop themselves and society.	3.77	0.67
Average Score	3.98	0.63

Figure 12: Comparison of Mean Scores of Course Management by Program



❖ Student Affairs & Student Development

Table 10: Mean and Percentage of the Graduates' Opinions on Student Affairs & Student Development

9. Student Affairs & Student Development	Opinion Level by Program 2017-2018																			
	Business Administration										Fine and Applied Arts								THM	
	BE (N = 49)		MF (N = 109)		MI (N = 141)		MK (N = 92)		IS (N = 7)		AP (N = 18)		FP (N = 30)		TP (N = 22)		CD (N = 17)		IH (N = 93)	
	M	SD	M	SD	M	SD	M	SD	M	SD	M	SD	M	SD	M	SD	M	SD	M	SD
9.1 Students are encouraged to participate in organizing extra-curricular activities.	3.63	0.67	3.57	0.71	3.72	0.74	3.77	0.80	3.71	0.49	3.17	0.79	3.30	0.53	3.50	0.51	3.71	0.85	3.99	0.63
9.2 Various student development activities are made available.	3.73	0.68	3.71	0.71	3.84	0.66	3.84	0.67	4.14	0.69	3.22	0.86	3.43	0.57	3.64	0.58	3.88	0.60	4.04	0.66
9.3 Resources and facilities for student activities are supported by the college.	3.65	0.70	3.62	0.73	3.85	0.66	3.83	0.66	4.00	0.58	3.11	0.83	3.43	0.57	3.45	0.60	3.76	0.83	4.09	0.62
9.4 Student welfare is provided.	3.77	0.75	3.66	0.61	3.79	0.66	3.76	0.69	4.00	0.58	3.17	0.62	3.30	0.65	3.45	0.51	3.88	0.78	3.96	0.64
9.5 Students are involved in the assessment of project/activity outcomes.	3.90	0.72	3.72	0.69	3.83	0.69	3.82	0.63	4.00	0.58	3.22	0.55	3.50	0.57	3.50	0.51	3.82	0.88	4.08	0.61
Average Score	3.73	0.70	3.66	0.69	3.80	0.68	3.80	0.69	3.97	0.58	3.18	0.73	3.39	0.58	3.51	0.54	3.81	0.79	4.03	0.63

Table 10: (Continued)

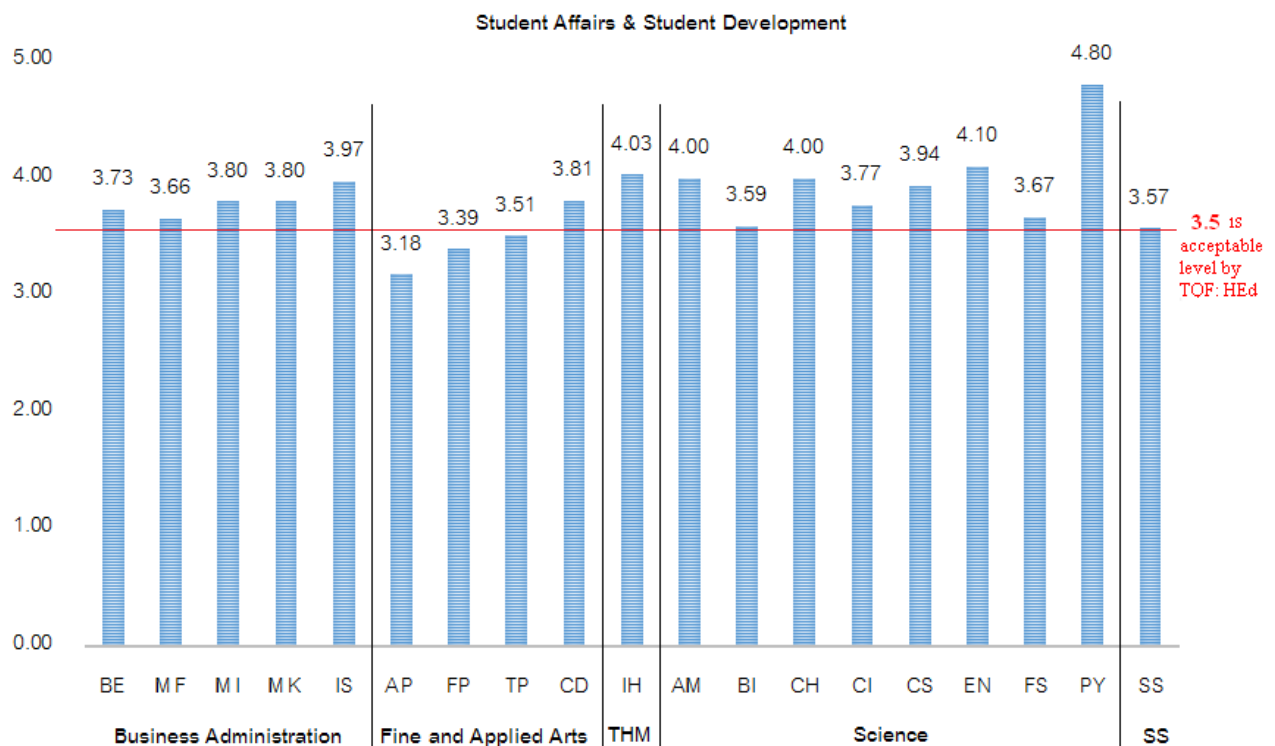
9. Student Affairs & Student Development	Opinion Level by Program 2017-2018																		Overall MUIC (N = 709)		% of Satisfaction at level ≥ 4
	Science																SS				
	AM (N = 1)		BI (N = 30)		CH (N = 1)		CI (N = 26)		CS (N = 13)		EN (N = 6)		FS (N = 9)		PY (N = 2)		SS (N = 43)				
	M	SD	M	SD	M	SD	M	SD	M	SD	M	SD	M	SD	M	SD	M	SD	M	SD	
9.1 Students are encouraged to participate in organizing extra-curricular activities.	4.00	0.00	3.69	0.66	3.00	0.00	3.64	0.70	3.92	0.76	3.83	0.75	3.56	1.13	5.00	0.00	3.51	0.94	3.71	0.61	57.12%
9.2 Various student development activities are made available.	4.00	0.00	3.66	0.61	5.00	0.00	3.88	0.60	3.77	0.73	4.00	0.63	3.78	1.20	5.00	0.00	3.72	0.98	3.92	0.60	66.15%
9.3 Resources and facilities for student activities are supported by the college.	4.00	0.00	3.34	0.55	4.00	0.00	3.80	0.87	4.15	0.55	4.33	0.82	3.78	0.67	5.00	0.00	3.51	0.86	3.84	0.58	62.91%
9.4 Student welfare is provided.	4.00	0.00	3.52	0.69	4.00	0.00	3.84	0.75	3.92	0.76	4.00	0.89	3.56	0.73	5.00	0.00	3.58	0.73	3.81	0.58	62.06%
9.5 Students are involved in the assessment of project/activity outcomes.	4.00	0.00	3.76	0.74	4.00	0.00	3.68	0.85	3.92	0.86	4.33	0.82	3.67	0.87	4.00	1.41	3.53	0.74	3.82	0.67	65.59%
Average Score	4.00	0.00	3.59	0.65	4.00	0.00	3.77	0.75	3.94	0.73	4.10	0.78	3.67	0.92	4.80	0.28	3.57	0.85	3.82	0.61	62.76%

MUIC Average Rating Score for Students Affairs & Student Development

[Ranked from highest to lowest]

9. Student Affairs & Student Development	M	SD
i. Various student development activities are made available.	3.92	0.60
ii. Resources and facilities for student activities are supported by the college.	3.84	0.58
iii. Students are involved in the assessment of project/activity outcomes.	3.82	0.67
iv. Student welfare is provided.	3.81	0.58
v. Students are encouraged to participate in organizing extra-curricular activities.	3.71	0.61
Average Score	3.82	0.61

Figure 13: Comparison of Mean Scores of Student Affairs & Student Development by Program



❖ Course Measurement & Evaluations

Table 11: Mean and Percentage of the Graduates' Opinions on Course Measurement & Evaluations

10. Course Measurements & Evaluations	Opinion Level by Program 2017-2018																			
	Business Administration										Fine and Applied Arts								THM	
	BE (N = 49)		MF (N = 109)		MI (N = 141)		MK (N = 92)		IS (N = 7)		AP (N = 18)		FP (N = 30)		TP (N = 22)		CD (N = 17)		IH (N = 93)	
	M	SD	M	SD	M	SD	M	SD	M	SD	M	SD	M	SD	M	SD	M	SD	M	SD
10.1 Students are clearly informed in advance about criteria and measurements used in course evaluations.	3.96	0.68	3.90	0.71	4.00	0.67	3.95	0.70	4.00	0.82	3.61	0.78	3.50	0.63	3.68	0.57	3.76	0.75	4.06	0.70
10.2 Measurement and course evaluations are consistent with the course's objectives.	3.96	0.65	3.90	0.65	4.01	0.60	3.97	0.64	4.29	0.49	3.61	0.70	3.57	0.63	3.55	0.51	3.65	0.79	4.10	0.63
10.3 Tools used in course measurement and evaluations are appropriate.	3.88	0.70	3.85	0.72	3.99	0.63	3.91	0.66	4.00	0.58	3.56	0.62	3.50	0.57	3.41	0.50	3.76	0.75	4.06	0.59
10.4 Measurement and evaluations are objective.	3.85	0.71	3.80	0.72	4.01	0.62	3.90	0.63	4.00	0.58	3.50	0.79	3.53	0.68	3.50	0.51	3.59	0.62	4.09	0.60
10.5 Evaluation results are communicated to the students in a timely manner.	3.90	0.69	3.82	0.72	3.98	0.65	3.84	0.62	3.71	0.49	3.44	1.04	3.50	0.63	3.50	0.60	3.71	0.85	3.99	0.67
Average Score	3.91	0.69	3.85	0.70	4.00	0.63	3.91	0.65	4.00	0.59	3.54	0.78	3.52	0.63	3.53	0.54	3.69	0.75	4.06	0.64

Table 11: (Continued)

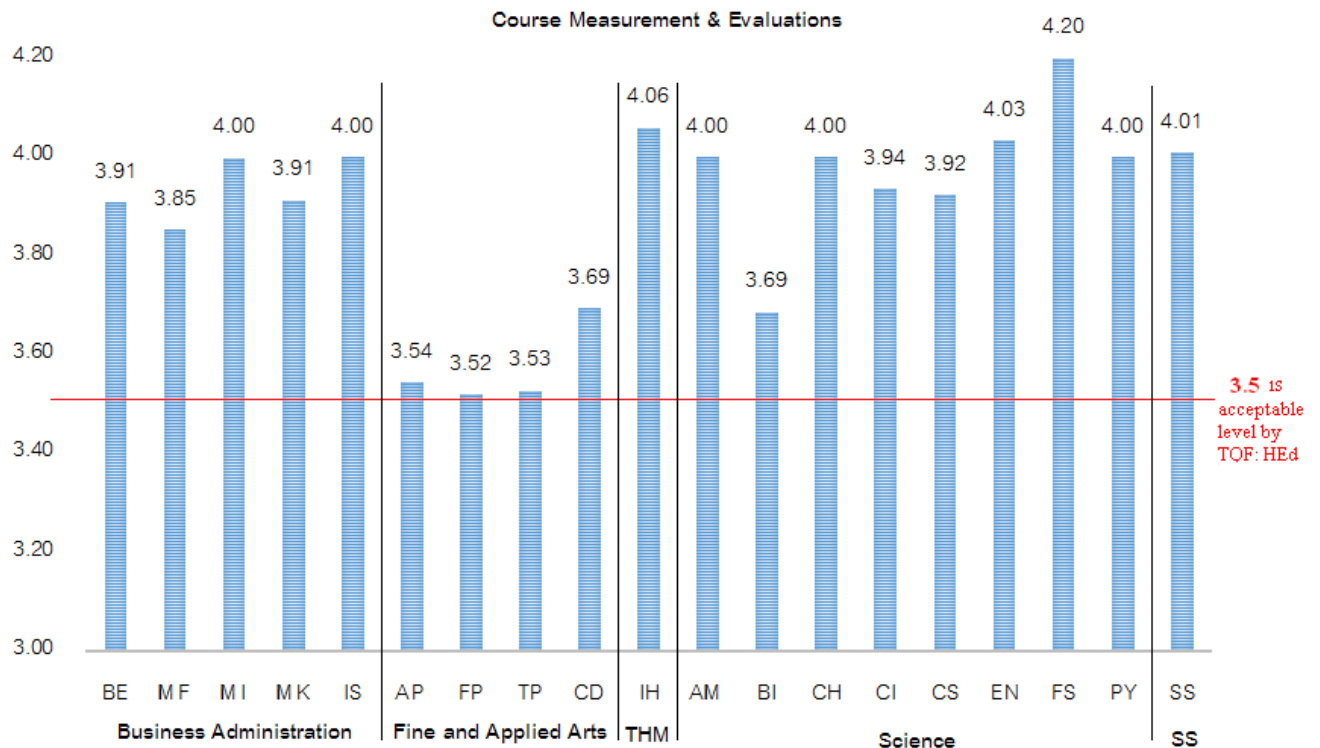
10. Course Measurements & Evaluations	Opinion Level by Program 2017-2018																		Overall MUIC (N = 709)		% of Satisfaction at level ≥ 4
	Science														SS						
	AM (N = 1)		BI (N = 30)		CH (N = 1)		CI (N = 26)		CS (N = 13)		EN (N = 6)		FS (N = 9)		PY (N = 2)		SS (N = 43)				
	M	SD	M	SD	M	SD	M	SD	M	SD	M	SD	M	SD	M	SD	M	SD	M	SD	
10.1 Students are clearly informed in advance about criteria and measurements used in course evaluations.	4.00	0.00	3.60	0.89	4.00	0.00	4.04	0.79	3.92	0.64	4.17	0.98	4.44	0.73	4.00	1.41	4.07	0.77	3.92	0.70	72.50%
10.2 Measurement and course evaluations are consistent with the course's objectives.	4.00	0.00	3.70	0.65	4.00	0.00	4.04	0.68	3.85	0.69	4.17	0.98	4.33	0.71	4.00	1.41	3.98	0.67	3.93	0.63	74.89%
10.3 Tools used in course measurement and evaluations are appropriate.	4.00	0.00	3.67	0.55	4.00	0.00	3.88	0.73	3.85	0.69	4.00	1.10	4.11	0.93	4.00	1.41	3.98	0.67	3.86	0.65	71.51%
10.4 Measurement and evaluations are objective.	4.00	0.00	3.80	0.66	4.00	0.00	3.84	0.69	4.00	0.58	4.17	0.98	4.00	1.22	4.00	1.41	3.98	0.67	3.87	0.67	72.07%
10.5 Evaluation results are communicated to the students in a timely manner.	4.00	0.00	3.67	0.88	4.00	0.00	3.88	0.73	4.00	0.58	3.67	0.82	4.11	0.60	4.00	1.41	4.05	0.65	3.82	0.66	70.10%
Average Score	4.00	0.00	3.69	0.73	4.00	0.00	3.94	0.72	3.92	0.63	4.03	0.97	4.20	0.84	4.00	1.41	4.01	0.69	3.88	0.66	72.21%

MUIC Average Rating Score for Course Measurement & Evaluations

[Ranked from highest to lowest]

10. Course Measurements & Evaluations	M	SD
i. Measurement and course evaluations are consistent with the course's objectives.	3.93	0.63
ii. Students are clearly informed in advance about criteria and measurements used in course evaluations.	3.92	0.70
iii. Measurement and evaluations are objective.	3.87	0.67
iv. Tools used in course measurement and evaluations are appropriate.	3.86	0.65
v. Evaluation results are communicated to the students in a timely manner.	3.82	0.66
Average Score	3.88	0.66

Figure 14: Comparison of Mean Scores of Course Measurement & Evaluations by Program



❖ Program Achievement

Table 12: Mean and Percentage of the Graduates' Opinions on Program Achievement

11. Program Achievement	Opinion Level by Program 2017-2018																			
	Business Administration										Fine and Applied Arts								THM	
	BE (N = 49)		MF (N = 109)		MI (N = 141)		MK (N = 92)		IS (N = 7)		AP (N = 18)		FP (N = 30)		TP (N = 22)		CD (N = 17)		IH (N = 93)	
	M	SD	M	SD	M	SD	M	SD	M	SD	M	SD	M	SD	M	SD	M	SD	M	SD
11.1 Graduates have enough basic knowledge for further studies.	3.83	0.63	3.95	0.66	4.08	0.62	4.03	0.64	4.00	0.82	3.67	0.77	3.60	0.72	3.64	0.73	4.06	0.75	4.27	0.53
11.2 Graduates have adequate knowledge and skills to work in their professions.	3.75	0.79	3.79	0.73	4.06	0.66	4.08	0.63	3.86	0.90	3.61	0.70	3.70	0.75	3.68	0.72	4.06	0.75	4.27	0.59
11.3 Graduates have a sense of social responsibility.	3.96	0.77	3.97	0.71	4.17	0.67	4.08	0.71	4.43	0.53	3.50	0.62	3.77	0.68	3.95	0.72	4.12	0.70	4.29	0.60
11.4 Graduates have morals and professional ethics as well as enthusiasm for self-development.	4.00	0.77	3.99	0.66	4.15	0.63	4.04	0.66	4.43	0.53	3.56	0.70	3.80	0.66	4.00	0.69	4.00	0.94	4.25	0.56
Average Score	3.89	0.74	3.92	0.69	4.11	0.65	4.06	0.66	4.18	0.70	3.58	0.70	3.72	0.70	3.82	0.71	4.06	0.78	4.27	0.57

Table 12: (Continued)

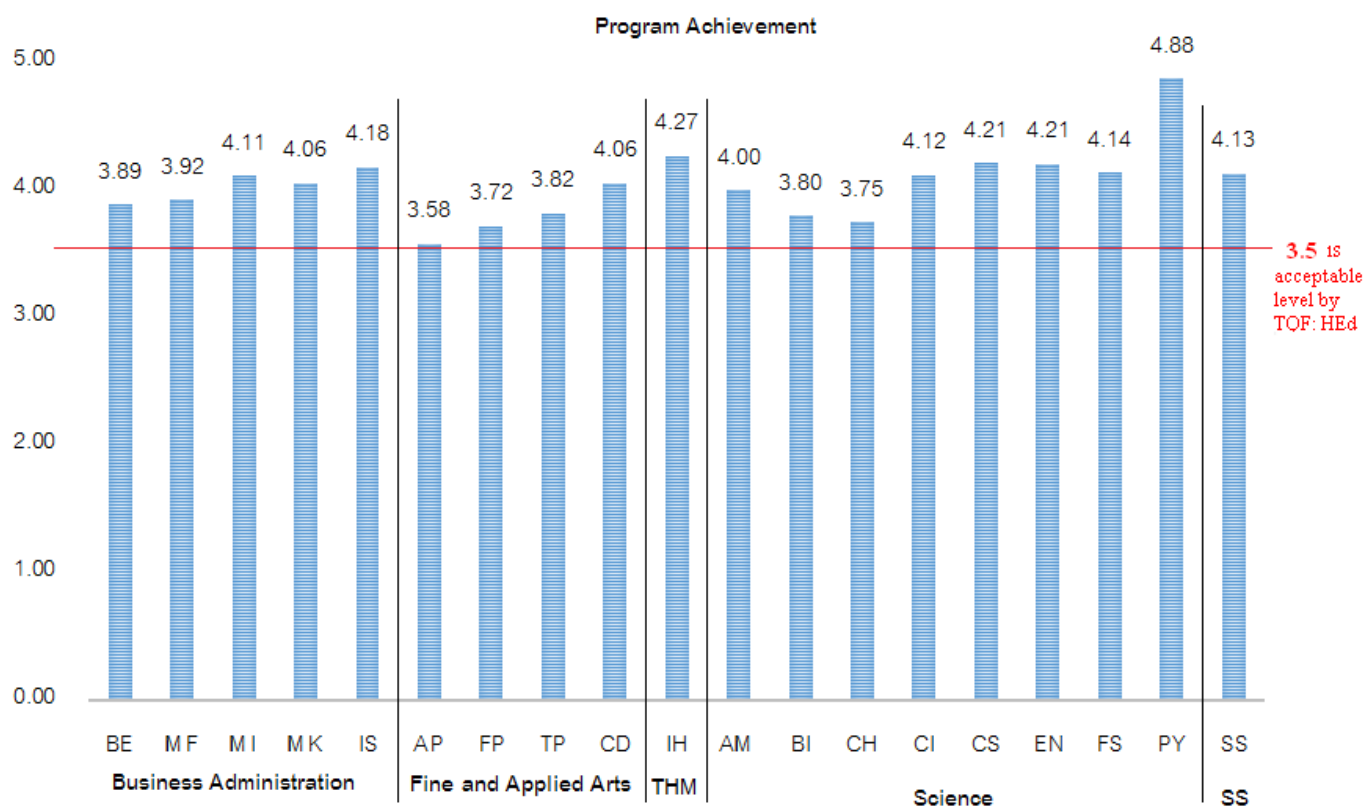
11. Program Achievement	Opinion Level by Program 2017-2018																		Overall MUIC (N = 709)		% of Satisfaction at level ≥ 4
	Science																SS				
	AM (N = 1)		BI (N = 30)		CH (N = 1)		CI (N = 26)		CS (N = 13)		EN (N = 6)		FS (N = 9)		PY (N = 2)		SS (N = 43)				
	M	SD	M	SD	M	SD	M	SD	M	SD	M	SD	M	SD	M	SD	M	SD	M	SD	
11.1 Graduates have enough basic knowledge for further studies.	4.00	0.00	3.80	0.71	5.00	0.00	4.04	0.73	4.08	0.64	4.17	0.75	4.11	0.60	5.00	0.00	4.07	0.74	4.07	0.58	78.70%
11.2 Graduates have adequate knowledge and skills to work in their professions.	4.00	0.00	3.57	0.63	4.00	0.00	4.04	0.73	4.23	0.73	3.83	0.75	4.00	0.71	5.00	0.00	3.95	0.65	3.97	0.60	76.02%
11.3 Graduates have a sense of social responsibility.	4.00	0.00	3.93	0.64	3.00	0.00	4.24	0.72	4.31	0.75	4.50	0.55	4.22	0.67	5.00	0.00	4.23	0.65	4.08	0.56	79.97%
11.4 Graduates have morals and professional ethics as well as enthusiasm for self-development.	4.00	0.00	3.90	0.71	3.00	0.00	4.16	0.85	4.23	0.73	4.33	0.82	4.22	0.67	4.50	0.71	4.28	0.63	4.03	0.63	80.82%
Average Score	4.00	0.00	3.80	0.67	3.75	0.00	4.12	0.76	4.21	0.71	4.21	0.72	4.14	0.66	4.88	0.18	4.13	0.67	4.04	0.59	78.88%

MUIC Average Rating Score for Program Achievement

[Ranked from highest to lowest]

11. Program Achievement	<i>M</i>	<i>SD</i>
i. Graduates have a sense of social responsibility.	4.08	0.56
ii. Graduates have enough basic knowledge for further studies.	4.07	0.58
iii. Graduates have morals and professional ethics as well as enthusiasm for self-development.	4.03	0.63
iv. Graduates have adequate knowledge and skills to work in their professions.	3.97	0.60
Average Score	4.04	0.59

Figure 15: Comparison of Mean Scores of Program Achievement by Program



❖ Program's Quality Assurance

Table 13: Mean and Percentage of the Graduates' Opinions on Program's Quality Assurance

12. Program's Quality Assurance	Opinion Level by Program 2017-2018																			
	Business Administration										Fine and Applied Arts								THM	
	BE (N = 49)		MF (N = 109)		MI (N = 141)		MK (N = 92)		IS (N = 7)		AP (N = 18)		FP (N = 30)		TP (N = 22)		CD (N = 17)		IH (N = 93)	
	M	SD	M	SD	M	SD	M	SD	M	SD	M	SD	M	SD	M	SD	M	SD	M	SD
12.1 There is an evaluation of the course's lecturer.	4.06	0.70	4.02	0.71	4.15	0.71	4.17	0.70	4.57	0.79	3.67	0.77	3.80	0.76	3.55	0.60	4.18	0.64	4.33	0.63
12.2 There is an appropriate process to support, give advice and assist students.	4.00	0.58	3.85	0.83	3.99	0.62	4.04	0.64	3.57	0.53	3.44	0.92	3.57	0.63	3.50	0.67	4.12	0.86	4.09	0.58
12.3 The program collaborates with organizations and experts outside the college.	3.94	0.76	3.70	0.83	3.87	0.76	4.01	0.64	3.43	0.53	3.61	1.09	3.53	0.73	3.55	0.60	4.00	0.79	4.11	0.63
12.4 Students enjoy collaborative networks with alumni.	3.56	0.85	3.51	0.78	3.57	0.79	3.68	0.80	3.29	0.49	3.28	0.67	3.53	0.78	3.32	0.48	3.76	0.83	3.77	0.74
Average Score	3.89	0.72	3.77	0.79	3.89	0.72	3.98	0.70	3.71	0.59	3.50	0.86	3.61	0.72	3.48	0.59	4.01	0.78	4.08	0.65

Table 13: (Continued)

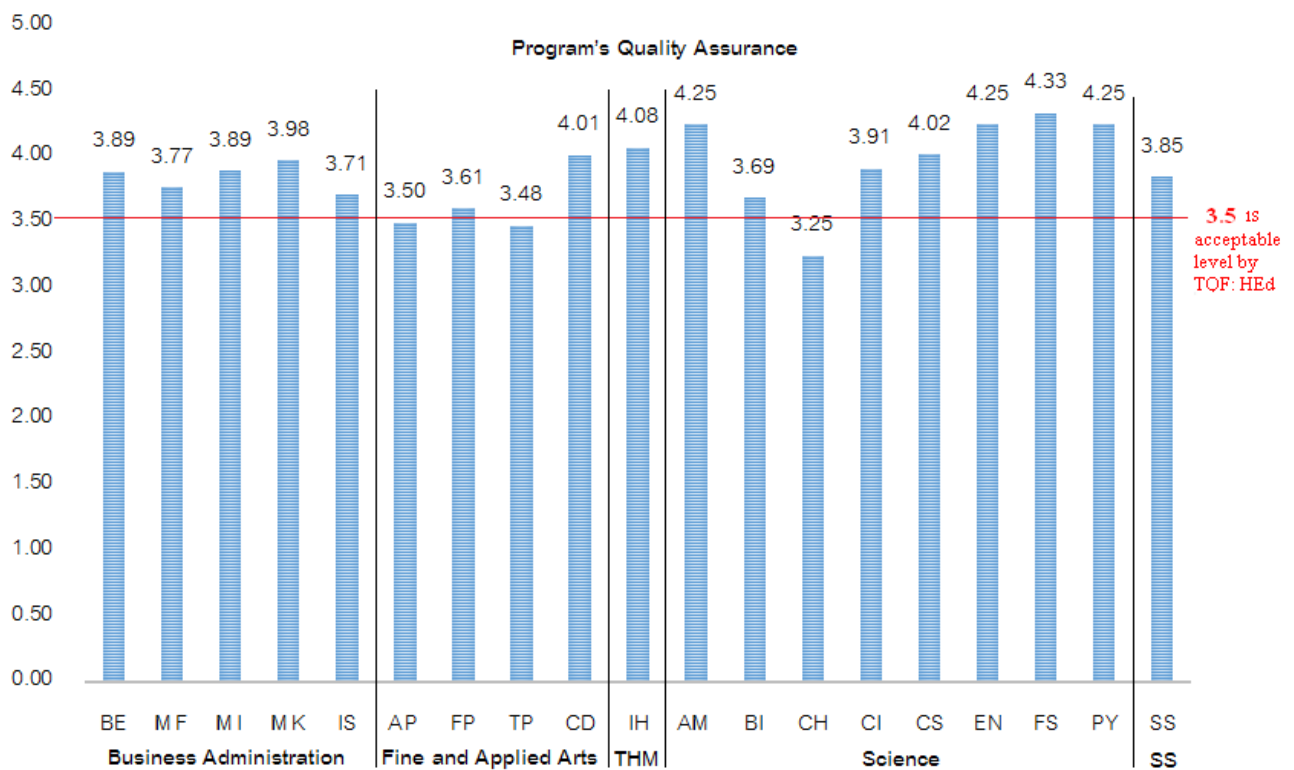
12. Program's Quality Assurance	Opinion Level by Program 2017-2018																		Overall MUIC (N = 709)		% of Satisfaction at level ≥ 4
	Science																SS				
	AM (N = 1)		BI (N = 30)		CH (N = 1)		CI (N = 26)		CS (N = 13)		EN (N = 6)		FS (N = 9)		PY (N = 2)		SS (N = 43)				
	M	SD	M	SD	M	SD	M	SD	M	SD	M	SD	M	SD	M	SD	M	SD	M	SD	
12.1 There is an evaluation of the course's lecturer.	4.00	0.00	4.07	0.69	4.00	0.00	4.32	0.69	4.15	0.69	4.67	0.82	4.78	0.44	5.00	0.00	4.23	0.84	4.19	0.59	80.96%
12.2 There is an appropriate process to support, give advice and assist students.	5.00	0.00	3.90	0.66	3.00	0.00	4.00	0.76	4.15	0.69	4.17	0.98	4.33	0.71	5.00	0.00	3.88	0.82	3.98	0.60	75.32%
12.3 The program collaborates with organizations and experts outside the college.	4.00	0.00	3.50	0.78	3.00	0.00	3.76	0.78	4.00	0.82	4.33	0.82	4.33	0.71	4.00	1.41	3.74	0.79	3.81	0.71	67.56%
12.4 Students enjoy collaborative networks with alumni.	4.00	0.00	3.30	0.60	3.00	0.00	3.56	0.96	3.77	0.93	3.83	0.75	3.89	0.78	3.00	0.00	3.53	1.01	3.54	0.64	50.21%
Average Score	4.25	0.00	3.69	0.68	3.25	0.00	3.91	0.80	4.02	0.78	4.25	0.84	4.33	0.66	4.25	0.35	3.85	0.87	3.88	0.64	68.51%

MUIC Average Rating Score for Program's Quality Assurance

[Ranked from highest to lowest]

12. Program's Quality Assurance	M	SD
i. There is an evaluation of the course's lecturer.	4.19	0.59
ii. There is an appropriate process to support, give advice and assist students.	3.98	0.60
iii. The program collaborates with organizations and experts outside the college.	3.81	0.71
iv. Students enjoy collaborative networks with alumni.	3.54	0.64
Average Score	3.88	0.64

Figure 16: Comparison of Mean Scores of Program's Quality Assurance by Program



❖ Multi-Cultural Experience

Table 14: Mean and Percentage of the Graduates' Opinions on Multi-Cultural Experience

13. Multi-cultural experiences	Opinion Level by Program 2017-2018																			
	Business Administration										Fine and Applied Arts								THM	
	BE (N = 49)		MF (N = 109)		MI (N = 141)		MK (N = 92)		IS (N = 7)		AP (N = 18)		FP (N = 30)		TP (N = 22)		CD (N = 17)		IH (N = 93)	
	M	SD	M	SD	M	SD	M	SD	M	SD	M	SD	M	SD	M	SD	M	SD	M	SD
13.1 International experience/exposure at MUIC	3.98	0.86	3.87	0.72	4.05	0.76	3.87	0.73	4.71	0.49	2.94	1.16	3.70	0.79	3.55	0.67	3.82	0.81	4.15	0.71
13.2 Student exchange programs	3.96	0.82	4.00	0.80	4.04	0.79	3.89	0.71	4.14	0.90	2.67	0.84	3.40	0.81	3.45	1.10	3.65	0.86	4.00	0.79
Average Score	3.97	0.84	3.94	0.76	4.04	0.78	3.88	0.72	4.43	0.69	2.81	1.00	3.55	0.80	3.50	0.89	3.74	0.84	4.08	0.75

Table 14: (Continued)

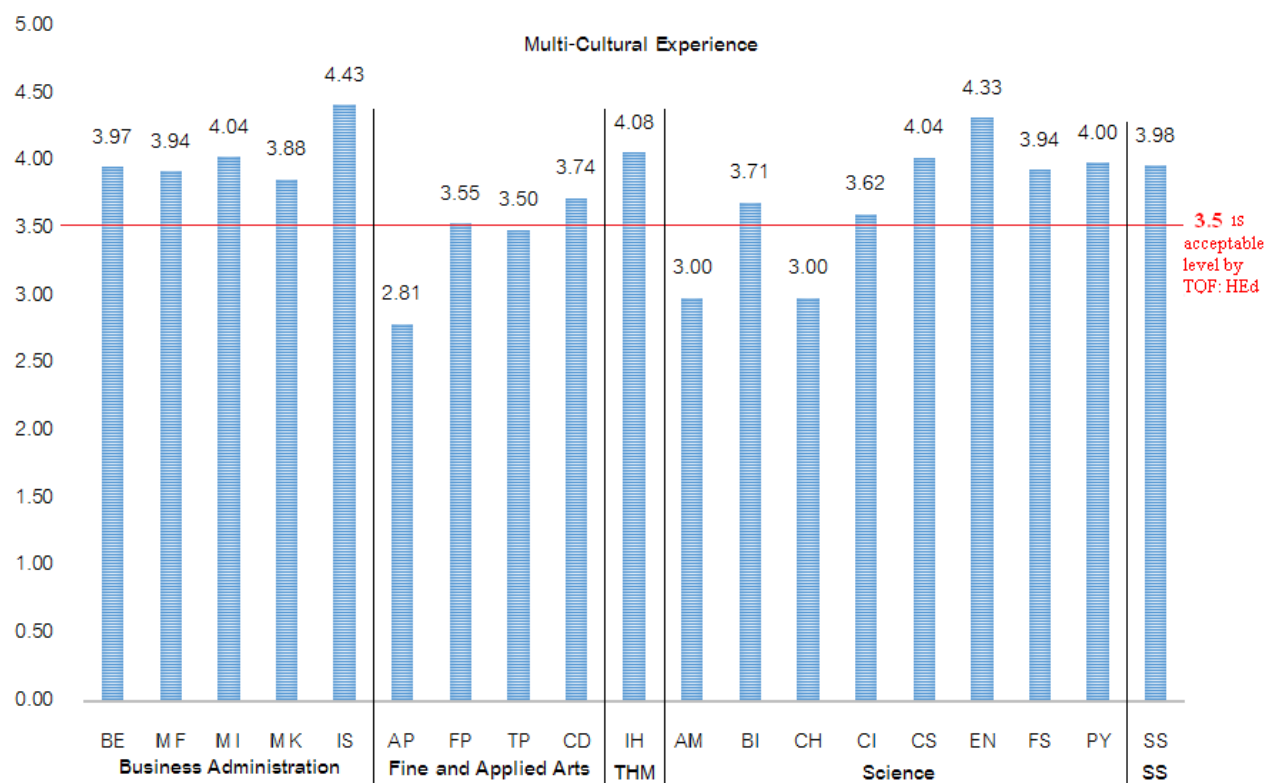
13. Multi-cultural experiences	Opinion Level by Program 2017-2018																		Overall MUIC (N = 709)	% of Satisfaction at level ≥ 4	
	Science																SS				
	AM (N = 1)		BI (N = 30)		CH (N = 1)		CI (N = 26)		CS (N = 13)		EN (N = 6)		FS (N = 9)		PY (N = 2)		SS (N = 43)				
	M	SD	M	SD	M	SD	M	SD	M	SD	M	SD	M	SD	M	SD	M	SD	M	SD	
13.1 International experience/exposure at MUIC	3.00	0.00	3.76	0.74	1.00	0.00	3.60	0.96	4.15	0.55	4.50	0.84	3.89	0.93	4.00	1.41	4.00	0.87	3.70	0.74	69.39%
13.2 Student exchange programs	3.00	0.00	3.66	0.72	5.00	0.00	3.64	0.91	3.92	0.76	4.17	0.98	4.00	0.87	4.00	1.41	3.95	0.82	3.81	0.78	64.17%
Average Score	3.00	0.00	3.71	0.73	3.00	0.00	3.62	0.93	4.04	0.66	4.33	0.91	3.94	0.90	4.00	1.41	3.98	0.84	3.75	0.76	66.78%

MUIC Average Rating Score for Multi-Cultural Experience

[Ranked from highest to lowest]

13. Multi-cultural experiences	<i>M</i>	<i>SD</i>
13.2 Student exchange programs	3.81	0.78
13.1 International experience/exposure at MUIC	3.70	0.74
Average Score	3.75	0.76

Figure 17: Comparison of Mean Scores of Multi-Cultural Experience by Program

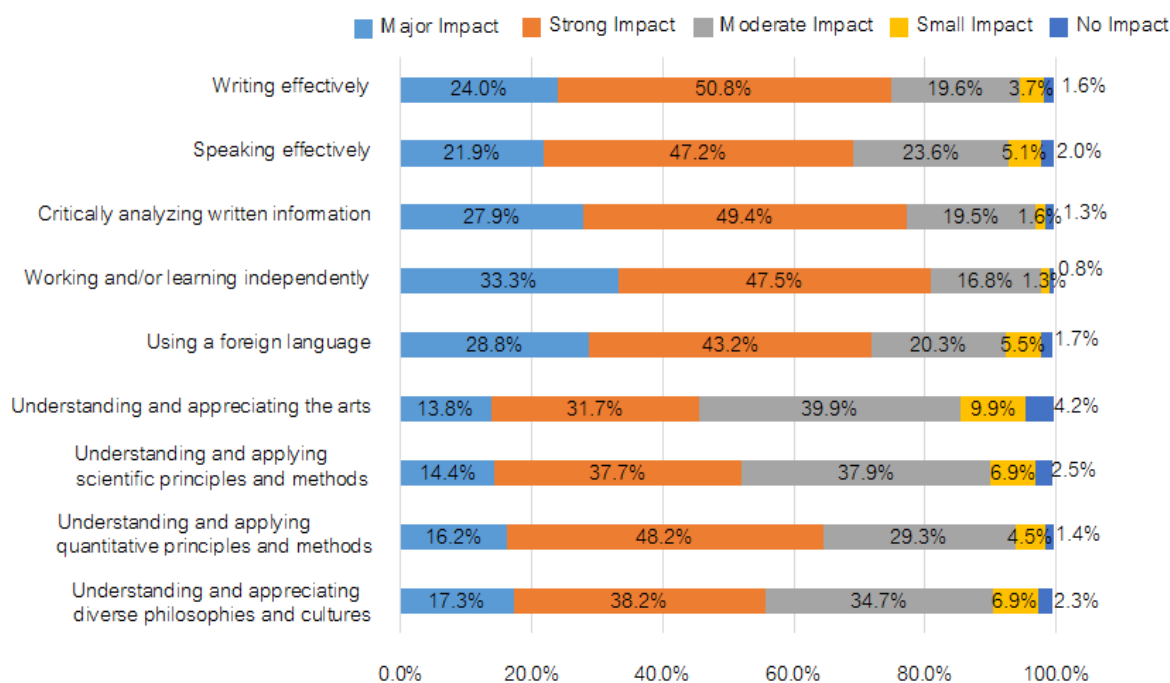


Part III: MUIC Experience Impacting Graduates' Development

❖ Skills

MUIC Experience Impacting Graduates' Development on Skills:

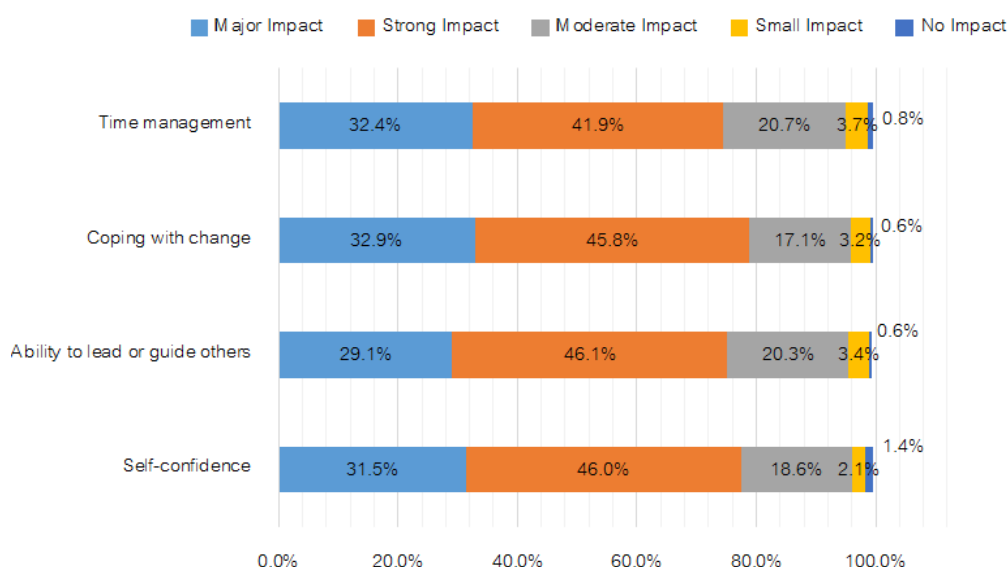
Figure 18: Comparison of Percentage of Development on Skills



❖ Contribution to Personal Development

MUIC Experience Impacting Contribution to Personal Development

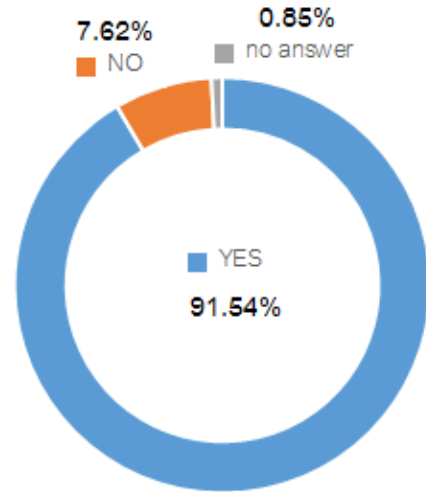
Figure 19: Comparison of Percentage of Contribution to Personal Development



Part IV: Willingness to Attend and to Recommend Others to Study at MUIC

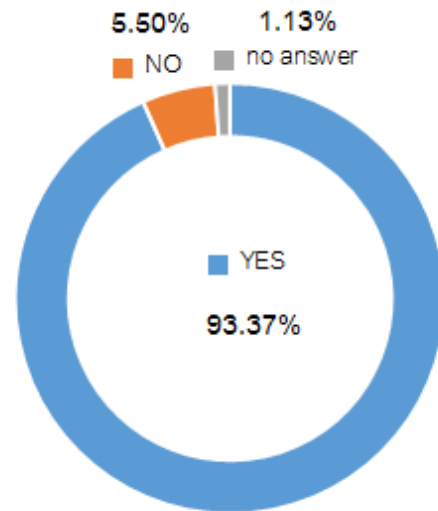
❖ Willingness to Attend MUIC if the Graduates Had to Make a College Choice All Over Again

Answer	N	%
YES	649	91.54%
NO	54	7.62%
no answer	6	0.85%
Total	709	100%



❖ Willingness to Recommend Others to Study at MUIC

Answer	N	%
YES	662	93.37%
NO	39	5.50%
no answer	8	1.13%
Total	709	100%



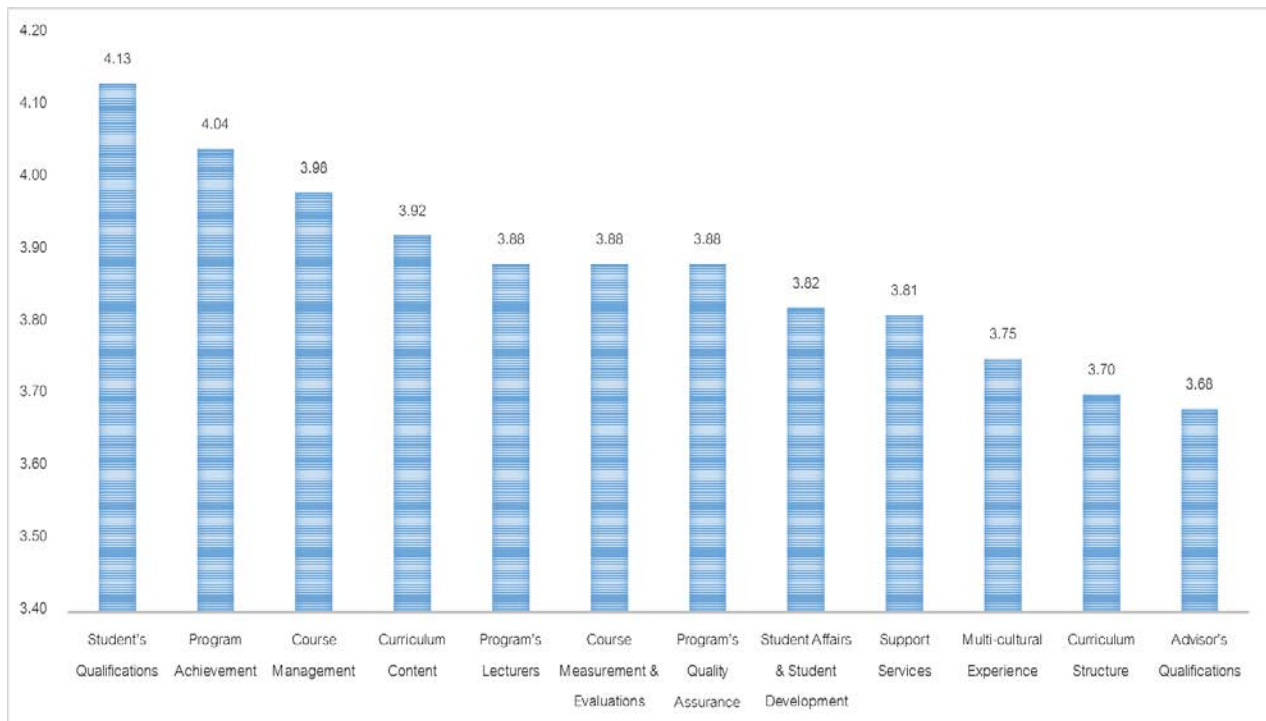
CHAPTER IV

Conclusion

The Graduates Survey for the Academic Year 2017-2018 was conducted with a response rate of 93.66% with 709 out of 757 Graduates who registered for graduation in the academic year 2017-2018. They were asked to complete and return the questionnaires to the Office of Educational Affairs for the purpose of curriculum development. Most of the returned questionnaires are from Business Administration Division, and Tourism and Hospitality Management Division.

Based on the findings of this study, the result firstly showed that most graduates of some programs, even 4-year programs, took more than 12 terms (4 years) to study for their graduation; these number were higher than the number of graduates who took 12 terms and who took less than 12 terms for graduation. This may be caused by too many credits required for the graduates to take for graduation, or certain classes unavailable in trimester. However, the graduates' taking minor(s) might also affected the duration of study at MUIC. Therefore, it's a matter of study plan, administration, and time management that should make the students understand and follow strictly.

Figure 20: Comparison of Mean Scores in Each Aspect



According to the results of the evaluation of MUIC curriculum from the graduates' views, **the average score in overall was 3.87**. When the mean scores in each aspect were compared, the scores were rated and ranked in order from highest to lowest as shown in figure 20.

From the findings, it seemed that the aspect "*Advisor's Qualifications*" especially in the point in '*Advisors closely follow up on students' learning outcomes*' should carefully be encouraged by the College, because of the lowest score received. When further considering the scores that each program received, there were several programs for example MF / MI / IS / TP / BI / and CH that received scores under 3.5 (out of 5), the acceptable level by TQF HEd.

Additionally, the aspect "*Curriculum Structure*" especially in '*The number of credits for General Education (GE) courses*' and '*the number of credits for GE courses in Social Science*' should also be more encouraged by the College. When seeing more in details of this aspect, there were many graduates who did not agree with the number of credits for GE courses; they thought that there were too many credits of GE course required to study for graduation, especially in categories of Social Science GE, Humanities GE, etc. This is on the other side of the graduates' views on Free Elective Course, Elective Major Courses, and Required Major Courses; the graduates oppositely thought that the number of credits for these kinds of courses were too limit or very few for them to study. They would like to take more these courses which could help them explore more in depth of their study field.

Moreover, for the dimension of MUIC Experience Impacting Graduates' Development, the findings presented that studying at MUIC provided a major impact on '*Working and/or learning independently*', '*Critically analyzing written information*', and '*Writing effective*' respectively. Besides, the graduates also reported that '*Coping with change*', and '*Self-confidence*' mostly affected their contribution to personal development skills.

Finally, the majority of the graduates stated that they had willingness to attend MUIC if they had to make a college choice all over again, and also to recommend others to study at MUIC; however, the College should not overlook or ignore the percentage of the graduates who reported 'NO' (7.62% in case of making a college choice all over again, and 5.50% in case of recommending

others to study at MUIC), and who might hesitate to answer and gave 'No answers' (0.85% in case of making a college choice all over again, and 1.13% in case of recommending others to study at MUIC).