

# GRADUATES SURVEY

Academic Year  
2023 - 2024



## Preface

A report on Graduates survey for the academic year 2023-2024 is an annual report of graduates' perceptions regarding their educational experience and its impact on graduates' development at Mahidol University International College (MUIC). The survey which covered a variety of issues related to curriculum objectives, curriculum structure, student's qualifications, program's lecturers, advisor's qualifications, support services, course management, student affairs and student development, course measurement and evaluations, program achievement, program's quality assurance, and multi-cultural experience.

Findings and suggestions from the survey are disseminated to MUIC Executives and Division Chairs for developing an appropriate action plan. Valuable insights were obtained and used to produce qualified graduates who will contribute to the development of the society.

Suggestions or recommendations to improve the report in the future are welcomed and highly appreciated.

Academic Strategy Unit  
Strategy and Academic Development Group  
The Office of Educational Affairs

## TABLE OF CONTENTS

	Page
Preface .....	i
Table of Contents .....	ii
CHAPTER I	
Introduction	
Rationale .....	1
Objectives .....	1
Scope of the Study .....	2
Expectations .....	2
Keywords .....	2
CHAPTER II	
Research Methods	
Population .....	4
Tool .....	4
Data Collection and Analysis .....	5
CHAPTER III	
Results	
Part I: General Information	
- Graduates of the Academic Year .....	8
- Cumulative GPA. ....	10
Part II: Evaluation of MUIC Curriculum	
- Curriculum Objectives .....	11
- Curriculum Structure .....	19
- Curriculum Content .....	24
- Student's Qualifications .....	27

## TABLE OF CONTENTS (CONTINUED)

	Page
- Program's Lecturers .....	30
- Advisor's Qualifications .....	33
- Support Services .....	36
- Course Management .....	39
- Student Affairs & Student Development .....	42
- Course Measurement & Evaluations .....	45
- Program Achievement .....	48
- Program's Quality Assurance .....	51
- Multi-cultural Experience .....	54
Part III: MUIC Experience Impacting Graduates' Development	
- Skills .....	58
- Contribution to Personal Development .....	61
Part IV: Willingness to Attend and to Recommend Others to Study at MUIC	
- Willingness to Attend MUIC if the Graduates Had to Make a College Choice All Over Again .....	64
- Willingness to Recommend Others to Study at MUIC .....	65
CHAPTER IV	
Conclusion .....	66

## CHAPTER I

### Introduction

#### Rationale:

To understand clearly about graduates' perceptions on MUIC experiences, a survey can serve as a tool to obtain information for improving the college's understanding of the level of graduates' satisfaction and dissatisfaction with the several factors. It is necessary for the college to develop curricula and instruction to be more effective and responsive to student expectations and satisfy the needs of a changing marketplace and society.

Therefore, the Academic Strategy Unit, Strategy and Academic Development Group administered the Graduates Survey for the report of the Academic Year 2023-2024 to obtain valuable information related to the perception of the MUIC graduates learning experience including the programs, support, services, and experience impacting graduates' development, etc.

In addition, the implications of this survey are a part of the quality assurance program to enable MUIC to formulate and implement strategies to maintain the strength in the overall success of the students.

#### Objectives:

1. To know the graduates' opinion level on the overall experiences at MUIC for the report of the academic year 2023-2024.
2. To identify the factors that will help MUIC to maintain and increase the satisfaction of graduates.

### Scope of the Study:

The survey assessed the level of MUIC graduates' opinion on the MUIC experiences for the report of the academic year 2023-2024. The collected data was analyzed and compared across various programs.

### Expectations:

1. Knowledge of the graduates' opinion level on the MUIC experiences for the report of the academic year 2023-2024.
2. Identification of the factors encouraging the graduates to maintain and increase the graduates' satisfaction and willingness to recommend others to study at MUIC.

### Keywords:

AM	Applied Mathematics Program
AP	Animation Production Program
BA	Business Administration Division
BE	Business Economics Program
BI	Biological Science Program
CD	Communication Design Program
CH	Chemistry Program
CI	Computer Engineering Program
CS	Computer Science Program
EN	Environment Science Program
FAA	Fine and Applied Arts Division
FP	Film Production Program
FS	Food Science and Technology Program

IC	Intercultural Studies and Languages Program
IH	International Hospitality Management Program
IRGA	International Relations and Global Affairs Program
MF	Finance Program
MI	International Business Program
MK	Marketing Program
PY	Physics Program
SCI	Science Division
SS	Social Science Division
TB	Travel and Service Business Entrepreneurship Program
THM	Tourism and Hospitality Management Division
The graduate	A person who has graduated from Mahidol University International College (MUIC)
The opinion	The thoughts or beliefs that graduates have
The satisfaction	A pleasant feeling which the graduate receives during his/her studies at Mahidol University International College (MUIC)

## CHAPTER II

### Research Method

#### Population:

The population consisted of 999 students who registered for graduation in the academic year 2023-2024. Approximately 323 (32.33%) of these students completed and returned the survey.

#### Tool:

The tool of this survey was a questionnaire that was adapted from the survey developed by the Division of Education Administration, Mahidol University (แบบสอบถามความพึงพอใจหลักสูตร) and was translated from Thai into English. The questionnaire was divided into 4 parts as follows:

- Part 1 is **Respondent's Profile**: Program/ Major, Cumulative GPA, and Gender.
- Part 2 is **Evaluation of the MUIC Curriculum**:
  - Curriculum Objectives
  - Curriculum Structure
  - Curriculum Content
  - Student's Qualifications
  - Program's Lecturers
  - Advisor's Qualifications
  - Support Services (Educational Materials, Textbooks, Buildings, and Sites)
  - Course Management
  - Student Affairs & Student Development
  - Course Measurement & Evaluations
  - Program Achievement
  - Program's Quality Assurance
  - Multi-cultural experience



- Part 3 is **MUIC Experience Impacting Graduates' Development** including Skills, and Contribution to Personal Development.
- Part 4 is **Willingness to Attend and to Recommend Others to Study at MUIC:**
  - The willingness to attend MUIC if the graduates had to make a college choice all over again
  - The willingness to recommend others to study at MUIC
  - Additional comments or suggestions

Data Collection and Analysis:

1. Online questionnaires of Graduates Survey for the report of the Academic Year 2023-2024 were submitted by email to all students who registered for graduation in trimester 3/2022-2023, trimester 1/2023-2024, and trimester 2/2023-2024 at the Office of Educational Affairs.
2. The graduates completed the online questionnaires that were developed by the Academic Strategy Unit, the Office of Educational Affairs within the given deadline.
3. The collected data was coded and analyze by using SPSS program to obtain Descriptive Statistics including frequencies, percentages, means, and standard deviations.
4. Additional comments and suggestions were reported.

## CHAPTER III

### Results

The results of the Graduates Survey for the academic year 2023-2024 are divided into five parts as the following:

#### Part I: General Information

1.1 Graduates in the Academic Year 2023-2024 (Survey Responses / The Number of Study Terms for Graduation / Minor(s))

1.2 Cumulative GPA.

#### Part II: Evaluation of MUIC Curriculum

2.1 Curriculum Objectives

2.2 Curriculum Structure

2.3 Curriculum Content

2.4 Student's Qualifications

2.5 Program's Lecturers

2.6 Advisor's Qualifications

2.7 Support Services

2.8 Course Management

2.9 Student Affairs & Student Development

2.10 Course Measurement & Evaluations

2.11 Program Achievement

2.12 Program's Quality Assurance

2.13 Multi-cultural Experience

#### Part III: MUIC Experience Impacting Graduates' Development

3.1 Skills

3.2 Contribution to Personal Development

Part IV: Willingness to Attend and to Recommend Others to Study at MUIC

4.1 Willingness to attend MUIC if the graduates had to make a college choice over again

4.2 Willingness to recommend others to study at MUIC

4.3 Additional comments or suggestions

## Part I: General Information

Out of the total 999 graduates, 323 graduates completed and returned the questionnaires to the Office of Educational Affairs, representing a response rate of 32.33%.

### ❖ Graduates of the Academic Year 2023-2024

(Survey Response / Minor(s) and the Number of Study Terms for Graduation of the Respondents)

Table 1: The number of graduates of the academic year 2023-2024 by program

(Survey Response / Minor(s) and the Number of Study Terms for Graduation of the Respondents)

Div.	Program	N of Graduates	Respondents		The Number of Study Terms for Graduation of the Graduates						Graduates with Minor(s) or Certificate	
					Less than 12 Study Terms		12 Study Terms (4 Years)		More than 12 Study Terms			
			N	% within Div.	N	% within Div.	N	% within Div.	N	% within Div.	N	% within Div.
BA	BE	37	11	29.73%	3	8.11%	3	8.11%	5	13.51%	29	78.38%
	MF	108	27	25.00%	6	5.56%	14	12.96%	7	6.48%	84	77.78%
	MI	163	30	18.40%	2	1.23%	18	11.04%	10	6.13%	142	87.12%
	MK	107	25	23.36%	4	3.74%	7	6.54%	14	13.08%	86	80.37%
FAA	CD	79	18	22.78%	5	6.33%	10	12.66%	3	3.80%	8	10.13%
	MC	104	30	28.85%	11	10.58%	13	12.50%	6	5.77%	5	4.81%
THM	IH/TB	73	30	41.10%	6	8.22%	19	26.03%	5	6.85%	15	20.55%
SCI	AM	2	1	50.00%	1	50.00%	0	0.00%	0	0.00%	0	0.00%
	BI	53	34	64.15%	8	15.09%	19	35.85%	7	13.21%	9	16.98%
	CH	9	4	44.44%	3	33.33%	0	0.00%	1	11.11%	0	0.00%
	CI	6	1	16.67%	0	0.00%	1	16.67%	0	0.00%	2	33.33%
	CS	46	15	32.61%	4	8.70%	9	19.57%	2	4.35%	11	23.91%
	EN	3	2	66.67%	0	0.00%	0	0.00%	2	66.67%	0	0.00%
	FS	24	14	58.33%	0	0.00%	9	37.50%	5	20.83%	5	20.83%
	PY	5	2	40.00%	2	40.00%	0	0.00%	0	0.00%	3	60.00%
SS	SS/IR	118	55	46.61%	37	31.36%	14	11.86%	4	3.39%	32	27.12%
HLD	IC	62	24	38.71%	13	20.97%	3	4.84%	8	12.90%	25	40.32%
Overall MUIC		999	323	32.33%	105	10.51%	139	13.91%	79	7.91%	456	45.65%

Figure 1: Comparison of Percentage of the Number of Graduates and Respondents by Program

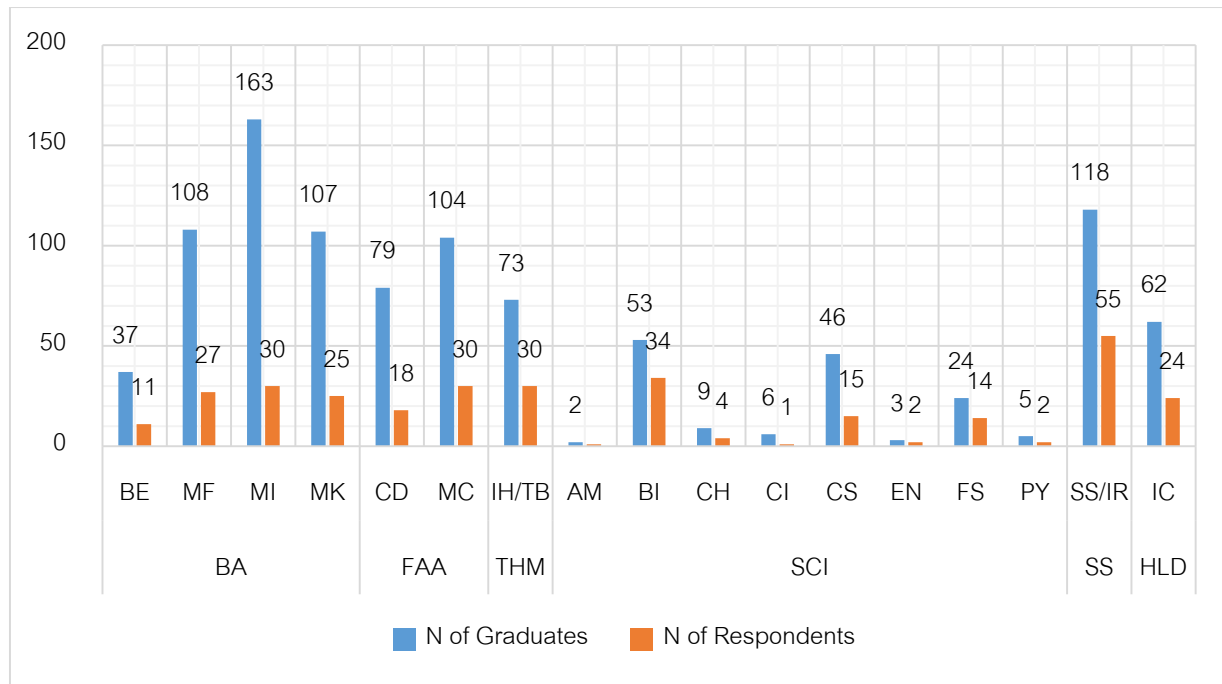
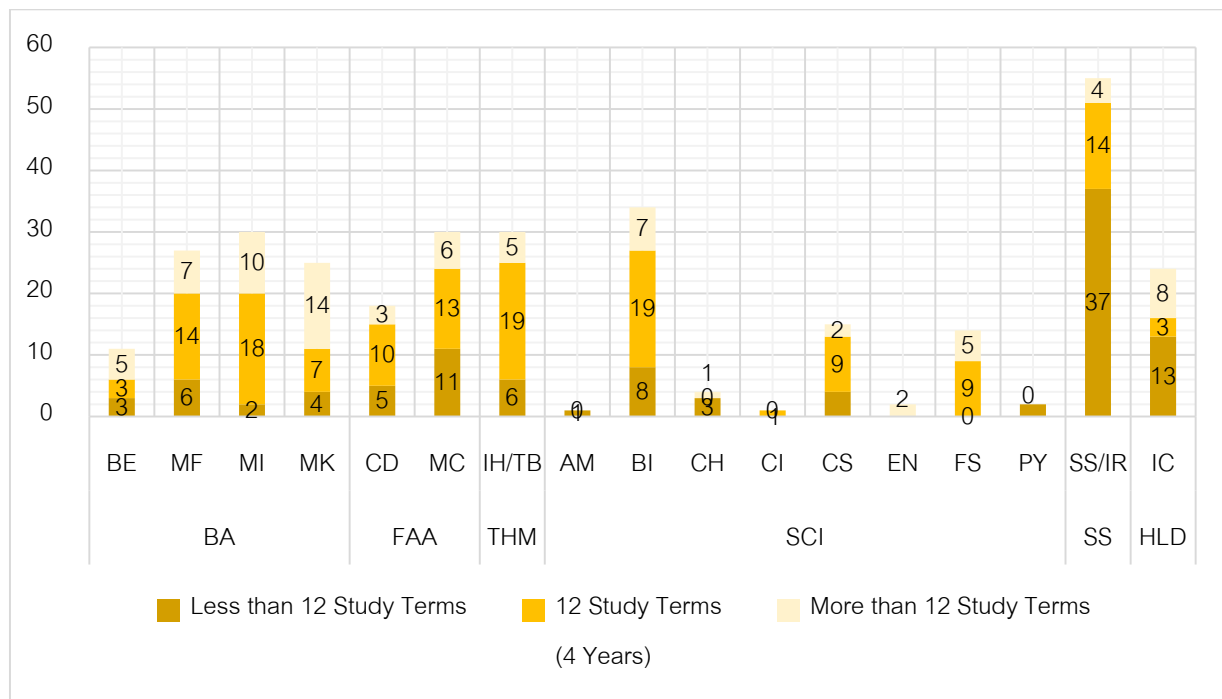


Figure 2: Comparison of the Number of Study Terms for Graduation of the Graduates by program



❖ Cumulative GPA

Table 2: Comparison of Cumulative GPAs of the Respondents (3 Academic Years)

Division	Program	Academic Year 2023-2024					Academic Year 2022-2023					Academic Year 2021-2022				
		N	Min	Max	M	SD	N	Min	Max	M	SD	N	Min	Max	M	SD
BA	BE	11	2.66	3.51	3.22	0.31	13	2.09	3.54	2.96	0.43	16	2.09	3.73	3.02	0.48
	MF	27	2.24	4.00	3.20	0.45	40	2.2	3.75	3.16	0.33	47	2.2	3.94	3.24	0.38
	MI	30	2.33	3.84	3.06	0.41	39	2.6	3.98	3.13	0.36	41	2.49	3.98	3.11	0.34
	MK	25	2.45	3.63	3.03	0.33	36	2.29	3.81	3.09	0.37	23	2.55	3.81	3.03	0.36
FAA	CD	18	2.79	3.91	3.59	0.30	19	2.49	3.84	3.43	0.37	16	2.47	3.84	3.31	0.43
	MC	30	2.15	3.90	3.29	0.39	34	2.27	3.64	3.06	0.36	36	2.16	3.64	3.01	0.40
SCI	AM	1	3.73	3.73	3.73	.	-	-	-	-	-	-	-	-	-	-
	BI	34	2.25	3.96	3.19	0.46	29	2.09	3.93	3.24	0.45	29	2.09	3.89	3.06	0.47
	CH	4	2.63	3.90	3.32	0.61	2	2.99	3.64	3.32	0.46	7	2.69	3.9	3.24	0.43
	CI	1	2.92	2.92	2.92	.	5	2.45	3.88	2.90	0.62	10	2.45	3.88	3.06	0.50
	CS	15	2.76	4.00	3.59	0.41	11	2.93	3.82	3.32	0.31	8	2.86	3.71	3.29	0.36
	EN	2	2.95	3.14	3.05	0.13	3	3.34	3.53	3.42	0.10	1	3.53	3.53	3.53	.
	FS	14	2.80	3.74	3.34	0.30	6	3.46	3.6	3.54	0.05	10	2.91	3.68	3.26	0.27
	PY	2	2.80	3.91	3.36	0.78	1	3.08	3.08	3.08	.	1	3.26	3.26	3.26	.
SS	SS/IRGA	55	2.30	3.98	3.24	0.33	32	2.5	3.95	3.17	0.30	18	2.6	3.92	3.27	0.36
THM	IH/TB	30	2.04	3.66	3.19	0.40	28	2.62	3.85	3.17	0.35	38	2.48	3.9	3.10	0.33
HLD	IC	24	2.41	3.77	3.24	0.36	28	2.49	3.68	3.19	0.34	22	2.26	3.71	3.14	0.43
Overall MUIC		323	2.04	4.00	3.24	0.40	326	2.09	3.98	3.17	0.37	323	2.09	3.98	3.14	0.39

## Part II: Evaluation of MUIC Curriculum

---

The graduates' opinions on their experiences at MUIC were measured by using scale of 1-5:

5 = Strongly Agree

4 = Agree

3 = Neutral

2 = Disagree

1 = Strongly Disagree

### ❖ Curriculum Objectives

In this part the curriculum objectives that the graduates studied were reported in order as the following:

#### Business Administration Division

- Business Economics Program (BE)
- Finance Program (MF)
- International Business Program (MI)
- Marketing Program (MK)

#### Fine and Applied Arts Division

- Communication Design Program (CD)
- Media and Communication (MC)

#### Tourism and Hospitality Management Division

- International Hospitality Management Program (IH)

#### Social Science Division

- International Relations and Global Affairs Program (IRGA)

#### Humanities and Language Division

- Intercultural Studies and Languages Program (IC)

#### Science Division

- Applied Mathematics Program (AM)
- Biological Science Program (BI)

- Chemistry Program (CH)
- Computer Engineering Program (CI)
- Computer Science Program (CS)
- Environmental Science (EN)
- Food Science and Technology Program (FS)
- Physics Program (PY)

---

 Business Administration Division

- Business Economics Program (BE)
- Finance Program (MF)
- International Business Program (MI)
- Marketing Program (MK)

Curriculum Objectives	Opinion Level											
	BE (N = 11)			MF (N = 27)			MI (N = 30)			MK (N = 25)		
	M	SD	% of Satisfaction at level 4&5	M	SD	% of Satisfaction at level 4&5	M	SD	% of Satisfaction at level 4&5	M	SD	% of Satisfaction at level 4&5
This program aims to produce entrepreneurial-minded graduates who are able to demonstrate to work in a team, to think critically and innovatively, to turn great ideas into actions using their business and disciplined-specific knowledge and skills for the better of organizations and the global society.	3.82	1.08	81.82%	4.22	0.70	85.19%	4.63	0.49	100.00%	4.36	0.91	88.00%
Average Score	3.82	1.08	81.82%	4.22	0.70	85.19%	4.63	0.49	100.00%	4.36	0.91	88.00%



 Fine and Applied Arts Division

- Communication Design Program (CD)
- Media and Communication (MC)

Curriculum Objectives	Opinion Level			Curriculum Objectives	Opinion Level		
	CD (N = 18)				MC (N = 30)		
	M	SD	% of Satisfaction at level 4&5		M	SD	% of Satisfaction at level 4&5
1.1 Understand design theories and principles, as well as the design process replying to industry standards	4.39	0.98	94.44%	1.1 To be the media skilled personnel who possess analytical minds, always concern on social issues and seek solutions.	4.27	0.83	83.33%
1.2 Exemplify professionalism in design, including recognizing a sense of ownership and intellectual property laws.	4.33	0.91	83.33%	1.2 Be neutral, responsible to society and community, and ethical in the profession.	4.40	0.67	90.00%
1.3 Awareness of global design trends and sustainability using current design-related technology.	4.17	1.04	77.78%	1.3 Possess the ability to explore, research and create content that move the world forward through media innovations.	4.17	0.79	76.67%
1.4 Utilize design research and apply acquired information into new innovative approach.	4.28	0.89	83.33%	1.4 Be a media creator of quality for Thailand, Southeast Asian region and the world.	4.23	0.82	76.67%
1.5 Demonstrate effective critical thinking and communication skills.	4.22	0.88	83.33%				
1.6 Construct a collaborative approach within a diverse group of colleagues and clients while maintaining social responsibility.	4.44	0.86	88.89%				
Average Score	4.31	0.93	85.19%	Average Score	4.27	0.78	81.67%

 Tourism and Hospitality Management Division


- International Hospitality Management Program (IH)

Curriculum Objectives	Opinion Level		
	IH (N = 30)		
	M	SD	% of Satisfaction at level 4&5
1.1 To be able to work up to professional standard, ethical and social responsibility in international tourism and hospitality industry	4.43	0.90	90.00%
1.2 To be able to operate international tourism and hospitality business	4.43	0.94	86.67%
1.3 To have an entrepreneurial and a managerial competency to develop the organizations/enterprises in international tourism and hospitality industry with sustainability mindset	4.47	0.78	90.00%
1.4 To be able to have a cultural awareness and an ability to communicate in third language.	4.50	0.68	90.00%
Average Score	4.46	0.82	89.17%

 Social Science Division

- International Relations and Global Affairs Program (IRGA)

Curriculum Objectives	Opinion Level		
	IRGA (N = 55)		
	M	SD	% of Satisfaction at level 4&5
1.1 The ability to synthesize theoretical and social issues using a wide range of analytical tools and approaches to foster critical thinking	4.45	0.66	90.91%
1.2 The conceptualization of a global perspective, with a strong focus on ASEAN and the wider Asian region	4.38	0.76	87.27%
1.3 Interactive approach to engagement with international affairs that fosters active learning, initiative, effective communication and team work; demonstrating internationally recognized standards of ethics	4.49	0.66	90.91%
1.4 "International awareness and orientation" and "harnessing globalization", as set out in the Thailand 4.0 program with a demonstrated awareness of and respect for culturally diverse groups	4.36	0.75	83.64%
1.5 A fresh and relevant program that embodies best international practice in the discipline and supports active research by Division faculty.	4.42	0.74	89.09%
Average Score	4.42	0.71	88.36%

 Humanities and Language Division

- Intercultural Studies and Languages Program (IC)

Curriculum Objectives	Opinion Level		
	IC (N = 24)		
	M	SD	% of Satisfaction at level 4&5
1.1 Understand various cultural contexts and their respective histories. Develop cultural sensitivity and intercultural negotiation and mediation skills.	4.58	0.58	95.83%
1.2 Take personal responsibility for their studies/work. Only those who work hard and develop an intrinsic motivation can achieve success.	4.71	0.46	100.00%
1.3 Have an ability to think analytically and independently. The Division encourages students to think, not to be passive learners.	4.63	0.77	91.67%
1.4 Possess academic excellence. The Division aims to produce graduates with capacity and ability.	4.54	0.88	91.67%
Average Score	4.61	0.68	94.79%

 Science Division

- Applied Mathematics Program (AM)
- Biological Science Program (BI)
- Chemistry Program (CH)
- Computer Engineering Program (CI)
- Computer Science Program (CS)
- Environmental Science Program (EN)
- Food Science and Technology Program (FS)
- Physics Program (PY)

Curriculum Objectives	Opinion Level			Curriculum Objectives	Opinion Level			Curriculum Objectives	Opinion Level		
	AM (N = 1)				BI (N = 34)				CH (N =4)		
	M	SD	% of Satisfaction at level 4&5		M	SD	% of Satisfaction at level 4&5		M	SD	% of Satisfaction at level 4&5
1.1 Apply critical thinking and communication skills to solve applied problems	5.00	.	100.00%	1.1 To develop graduates who can integrate and apply knowledge as well as technical skills in biological, biomedical and related sciences to address health, societal and environmental issues	4.29	0.72	85.29%	1.1 Work for local and global employment in the chemical industry or related areas, or pursue higher degree in Chemistry or in allied fields, such as medicine, dentistry, pharmacy, chemical and petrochemical engineering, environmental areas.	4.75	0.50	100.00%
1.2 Use knowledge and skills necessary for immediate employment or acceptance into a graduate program	4.00	.	100.00%	1.2 To develop students' critical and analytical thinking, thus enabling evidence-based solutions for human well-being	4.41	0.66	91.18%	1.2 Think critically and solve problem that relate to chemical and other scientific applications, and understand the underlying theoretical principles governing the chemical behavior at the atomic, molecular and macroscopic levels	4.75	0.50	100.00%
1.3 Maintain a core of mathematical and technical knowledge that is adaptable to changing technologies and provides a solid foundation for future learning	4.00	.	100.00%	1.3 To produce graduates skilled in interpersonal communications	4.44	0.70	88.24%	1.3 Conduct experiments or do researches with laboratory skills, that include preparative techniques, methods for disposing and handling toxic compounds and wastes, and usage of modern instrumentations and the interpretative handling of data.	4.75	0.50	100.00%
				1.4 To instill moral and ethical values, thus enabling wise decision-making	4.38	0.82	85.29%	1.4 Design and conduct research scientifically and ethically to solve problem in real-life situations.	4.25	0.96	75.00%
				1.5 To develop graduates as "innovators" with innovative mindset who can formulate original ideas and novel products to serve the social needs.	4.09	0.97	79.41%				
				1.6 To prepare students for a broader scope of post-graduate paths, including employment in biological or related sciences, post-graduate studies and professional biomedical degrees.	4.29	0.94	82.35%				
Average Score	4.33	.	100.00%	Average Score	4.32	0.80	85.29%	Average Score	4.63	0.61	93.75%

A Report on Graduates Survey for the Academic Year 2023-2024.

Academic Strategy Unit, Strategy and Academic Development Group, the Office of Educational Affairs.

November 2024

Curriculum Objectives	Opinion Level			Curriculum Objectives	Opinion Level			Curriculum Objectives	Opinion Level		
	CI (N = 1)				CS (N = 15)				EN (N = 2)		
	M	SD	% of Satisfaction at level 4&5		M	SD	% of Satisfaction at level 4&5		M	SD	% of Satisfaction at level 4&5
1.1 To produce engineering graduates with the knowledge, ability, and skill in computer engineering up to international standards who can apply their knowledge in order to work effectively in an increasingly globalized world.	2.00	.	0.00%	1.1 To produce graduates for employment in the IT/computing industry globally and for further study in computer science and related disciplines, who would be contributing and responsible member of the society and the profession.	4.27	0.80	80.00%	1.1 To provide comprehensive knowledge and skills in environmental science by international standards	4.50	0.71	100.00%
1.2 To produce engineering graduates who can conduct effective analysis, research, and development in computer engineering in Thailand and overseas.	3.00	.	0.00%	1.2 To produce graduates who appreciate the synergy between theoretical principles and practical considerations, and can integrate them into a viable solution that meets design and performance constraints.	4.27	0.80	80.00%	1.2 To provide a laboratory/field environment and operating tools/software from a wide variety of disciplines	5.00	.	100.00%
1.3 To produce engineering graduates with social responsibility, leadership, ethics, who value environmental resources, and apply their knowledge for the benefit of humankind.	4.00	.	100.00%	1.3 To produce graduates who are able to organize and communicate with clarity concepts and ideas in computing using the appropriate means and platforms.	4.53	0.74	86.67%	1.3 To provide independent scientific and technical research on environmental issues	4.50	0.71	100.00%
1.4 To encourage research and academic service in computer engineering and other related engineering disciplines.	2.00	.	0.00%	1.4 To produce graduates with strong critical-thinking and problem-solving skills, naturally utilizing ICT literacy and quantitative reasoning as an integral part of the thought process.	4.67	0.62	93.33%	1.4 To provide students an opportunity for entrepreneurship or to conduct research independently	2.50	2.12	50.00%
								1.5 To formulate and implement solutions to problems of sustainable development, through the use of analytical skill and theoretical knowledge	3.50	2.12	50.00%
								1.6 To adapt to change and being lifelong learning.	4.00	1.41	50.00%
Average Score	2.75	.	25.00%	Average Score	4.43	0.74	85.00%	Average Score	4.00	1.41	75.00%

A Report on Graduates Survey for the Academic Year 2023-2024.

Academic Strategy Unit, Strategy and Academic Development Group, the Office of Educational Affairs.

November 2024

Curriculum Objectives	Opinion Level			Curriculum Objectives	Opinion Level		
	FS (N = 14)				PY (N = 2)		
	M	SD	% of Satisfaction at level 4&5		M	SD	% of Satisfaction at level 4&5
1.1 Graduates are able to produce safe and high-quality food products in an industrial scale for general public	4.14	0.86	71.43%	1.1 Work for local and global employment, or pursue higher degree in Physics industry or other fields, such as medicine, engineering, finance.	3.00	1.41	50.00%
1.2 Graduates are qualified and accepted to graduate programs in world-class universities	4.43	0.65	92.86%	1.2 Think critically and solve problems related to scientific applications, and understand the associated underlying theoretical principles.	2.50	0.71	0.00%
				1.3 Design and conduct research scientifically and ethically to solve problem in real-life situations.	1.50	0.71	0.00%
Average Score	4.29	0.76	82.14%	Average Score	2.33	0.94	16.67%

Table 3: Mean and Percentage of Graduates' Opinions on Curriculum Structure

2. Curriculum Structure	Opinion Level by Program 2023-2024																										
	Business Administration									Fine and Applied Arts						THM			SS			HLD					
	BE (N = 11)			MF (N = 27)			MI (N = 30)			MK (N = 25)			CD (N = 18)			MC (N = 30)			IH (N = 30)			IRGA (N = 55)			IC (N = 24)		
	M	SD	% of Satisfaction at level 4&5	M	SD	% of Satisfaction at level 4&5	M	SD	% of Satisfaction at level 4&5	M	SD	% of Satisfaction at level 4&5	M	SD	% of Satisfaction at level 4&5	M	SD	% of Satisfaction at level 4&5	M	SD	% of Satisfaction at level 4&5	M	SD	% of Satisfaction at level 4&5	M	SD	% of Satisfaction at level 4&5
2.1 The number of credits for General Education (GE) courses	3.09	0.94	36.36%	3.30	1.30	48.15%	4.03	1.00	73.33%	3.80	1.00	68.00%	4.06	1.16	72.22%	3.37	1.22	56.67%	3.97	1.16	70.00%	4.42	0.81	87.27%	4.29	1.00	79.17%
2.2 The number of credits for GE courses in English Communication	3.45	0.52	45.45%	3.74	1.43	66.67%	4.37	0.85	83.33%	4.08	0.91	72.00%	4.17	1.10	72.22%	3.80	0.92	66.67%	4.27	0.91	83.33%	4.47	0.72	90.91%	4.63	0.77	91.67%
2.3 The number of credits for GE courses in Natural Science	3.27	0.65	36.36%	3.67	1.24	62.96%	4.03	0.96	70.00%	3.76	0.78	64.00%	4.17	0.99	72.22%	3.63	1.13	63.33%	4.13	0.90	73.33%	4.38	0.76	83.64%	4.21	0.88	79.17%
2.4 The number of credits for GE courses in Humanities	3.27	0.65	36.36%	3.59	1.25	51.85%	4.13	0.86	76.67%	3.76	1.01	64.00%	4.06	1.06	72.22%	3.67	1.09	63.33%	4.07	0.94	73.33%	4.40	0.78	85.45%	4.54	0.78	83.33%
2.5 The number of credits for GE courses in Social Science	3.36	0.50	36.36%	3.59	1.15	55.56%	4.17	0.87	76.67%	3.68	1.03	64.00%	4.11	1.02	66.67%	3.67	1.12	66.67%	4.13	0.82	80.00%	4.45	0.79	89.09%	4.33	0.82	79.17%
2.6 The number of credits for GE courses in Health & PE	3.36	0.67	45.45%	3.26	1.63	55.56%	3.93	1.01	66.67%	3.60	1.15	56.00%	4.28	0.83	77.78%	3.03	1.35	40.00%	3.70	1.29	60.00%	4.18	1.14	78.18%	3.96	1.16	70.83%
2.7 The number of credits for Core Courses	3.18	0.75	36.36%	4.33	0.78	88.89%	4.47	0.78	90.00%	3.88	0.88	64.00%	4.56	0.70	88.89%	3.77	1.01	63.33%	4.23	1.07	76.67%	4.38	0.87	87.27%	4.75	0.53	95.83%
2.8 The number of credits for Required Major Courses	2.82	0.98	27.27%	4.22	1.09	85.19%	4.40	1.00	86.67%	3.84	1.03	64.00%	4.44	0.86	77.78%	3.70	1.12	63.33%	4.17	1.21	73.33%	4.42	0.83	87.27%	4.63	0.77	91.67%
2.9 The number of credits for Elective Major Courses	3.18	1.08	45.45%	3.93	1.14	66.67%	4.30	0.99	86.67%	4.00	0.91	68.00%	4.28	1.13	77.78%	3.80	1.03	73.33%	4.03	1.25	63.33%	4.24	1.00	80.00%	4.42	0.93	87.50%
2.10 The number of credits for Free Elective Courses	3.36	0.92	45.45%	3.70	1.14	59.26%	3.93	1.11	66.67%	3.96	1.02	68.00%	4.06	1.16	66.67%	3.90	0.92	66.67%	3.97	1.16	63.33%	4.36	0.87	85.45%	4.29	1.00	79.17%
2.11 The number of total credits required for graduation	3.45	0.82	45.45%	4.04	0.90	70.37%	4.40	0.77	83.33%	4.12	0.93	72.00%	4.28	0.96	77.78%	3.80	0.89	70.00%	4.23	0.90	76.67%	4.42	0.98	87.27%	4.71	0.55	95.83%
2.12 The overall curriculum structure	3.64	0.67	54.55%	3.93	0.87	66.67%	4.37	0.72	86.67%	4.04	0.98	72.00%	4.33	0.77	83.33%	3.83	0.83	70.00%	4.30	0.88	73.33%	4.44	0.76	87.27%	4.50	0.66	91.67%
Average Score	3.29	0.76	40.91%	3.77	1.16	64.81%	4.21	0.91	78.89%	3.88	0.97	66.33%	4.23	0.98	75.46%	3.66	1.05	63.61%	4.10	1.04	72.22%	4.38	0.86	85.76%	4.44	0.82	85.42%

Table 3: (-Continued-)

2. Curriculum Structure	Opinion Level by Program 2023-2024																										
	Science																					Overall MUIC					
	AM (N = 1)			BI (N = 34)			CH (N = 4)			CI (N = 1)			CS (N = 15)			EN (N = 2)			FS (N = 14)			PY (N = 2)			(N = 323)		
	M	SD	% of Satisfaction at level 4&5	M	SD	% of Satisfaction at level 4&5	M	SD	% of Satisfaction at level 4&5	M	SD	% of Satisfaction at level 4&5	M	SD	% of Satisfaction at level 4&5	M	SD	% of Satisfaction at level 4&5	M	SD	% of Satisfaction at level 4&5	M	SD	% of Satisfaction at level 4&5	M	SD	% of Satisfaction at level 4&5
2.1 The number of credits for General Education (GE) courses	4.00	.	100.00%	4.15	1.13	76.47%	4.00	1.41	75.00%	2.00	.	0.00%	3.80	1.21	66.67%	3.50	2.12	50.00%	3.50	1.22	50.00%	4.50	0.71	100.00%	3.75	1.16	65.25%
2.2 The number of credits for GE courses in English Communication	5.00	.	100.00%	4.32	0.91	85.29%	4.25	1.50	75.00%	2.00	.	0.00%	4.20	0.94	80.00%	3.50	2.12	50.00%	3.64	1.28	57.14%	4.50	0.71	100.00%	4.02	1.04	71.75%
2.3 The number of credits for GE courses in Natural Science	4.00	.	100.00%	4.26	0.99	79.41%	4.50	0.58	100.00%	2.00	.	0.00%	4.13	0.99	73.33%	3.00	2.83	50.00%	3.36	1.08	35.71%	4.50	0.71	100.00%	3.82	1.03	67.26%
2.4 The number of credits for GE courses in Humanities	5.00	.	100.00%	4.21	0.91	79.41%	4.25	1.50	75.00%	2.00	.	0.00%	4.20	0.94	80.00%	2.00	1.41	0.00%	3.57	1.09	42.86%	4.50	0.71	100.00%	3.84	1.00	63.75%
2.5 The number of credits for GE courses in Social Science	4.00	.	100.00%	4.18	0.97	79.41%	4.25	1.50	75.00%	2.00	.	0.00%	4.13	1.06	66.67%	3.50	2.12	50.00%	3.79	1.05	64.29%	4.50	0.71	100.00%	3.87	1.04	67.62%
2.6 The number of credits for GE courses in Health & PE	4.00	.	100.00%	3.53	1.35	55.88%	3.75	1.50	50.00%	2.00	.	0.00%	4.07	1.16	66.67%	2.50	0.71	0.00%	3.57	1.28	50.00%	4.50	0.71	100.00%	3.60	1.13	57.24%
2.7 The number of credits for Core Courses	5.00	.	100.00%	4.29	0.91	76.47%	4.00	1.41	75.00%	1.00	.	0.00%	4.47	0.74	86.67%	3.50	2.12	50.00%	4.07	1.14	71.43%	4.50	0.71	100.00%	4.02	0.96	73.58%
2.8 The number of credits for Required Major Courses	4.00	.	100.00%	4.29	0.87	79.41%	4.25	0.96	75.00%	1.00	.	0.00%	4.53	0.64	93.33%	3.50	2.12	50.00%	4.21	1.19	71.43%	2.50	0.71	0.00%	3.82	1.02	66.22%
2.9 The number of credits for Elective Major Courses	5.00	.	100.00%	4.15	0.96	67.65%	3.50	1.73	50.00%	1.00	.	0.00%	4.27	1.16	80.00%	3.00	2.83	50.00%	3.64	1.45	57.14%	2.50	0.71	0.00%	3.72	1.22	61.97%
2.10 The number of credits for Free Elective Courses	4.00	.	100.00%	4.21	0.98	73.53%	4.00	1.15	50.00%	2.00	.	0.00%	4.13	0.99	73.33%	2.00	.	0.00%	3.93	1.21	57.14%	4.00	1.41	50.00%	3.75	1.07	59.10%
2.11 The number of total credits required for graduation	5.00	.	100.00%	4.38	0.85	82.35%	4.50	0.58	100.00%	2.00	.	0.00%	4.33	0.82	80.00%	3.00	2.83	50.00%	4.07	1.21	64.29%	4.00	1.41	50.00%	4.04	1.03	70.90%
2.12 The overall curriculum structure	4.00	.	100.00%	4.21	0.77	79.41%	4.25	0.96	75.00%	3.00	.	0.00%	4.33	0.72	86.67%	5.00	.	100.00%	4.00	1.04	64.29%	3.00	.	0.00%	4.07	0.82	70.05%
Average Score	4.42	.	100.00%	4.18	0.97	76.23%	4.13	1.23	72.92%	1.83	.	0.00%	4.22	0.95	77.78%	3.17	2.12	41.67%	3.78	1.19	57.14%	3.96	0.84	66.67%	3.86	1.04	66.22%



## MUIC Average Rating Score for Curriculum Structure

(Ranked from highest to lowest)

2. Curriculum Structure		M	SD
i.	The overall curriculum structure	4.07	0.82
ii.	The number of total credits required for graduation	4.04	1.03
iii.	The number of credits for GE courses in English Communication	4.02	1.04
iv.	The number of credits for Core Courses	4.02	0.96
v.	The number of credits for GE courses in Social Science	3.87	1.04
vi.	The number of credits for GE courses in Humanities	3.84	1.00
vii.	The number of credits for GE courses in Natural Science	3.82	1.03
viii.	The number of credits for Required Major Courses	3.82	1.02
ix.	The number of credits for Free Elective Courses	3.75	1.07
x.	The number of credits for General Education (GE) courses	3.75	1.16
xi.	The number of credits for Elective Major Courses	3.72	1.22
xii.	The number of credits for GE courses in Health & Physical Education	3.60	1.13
Average Score		3.86	1.04

Figure 3: Comparison of Mean Score of Curriculum Structure by Program

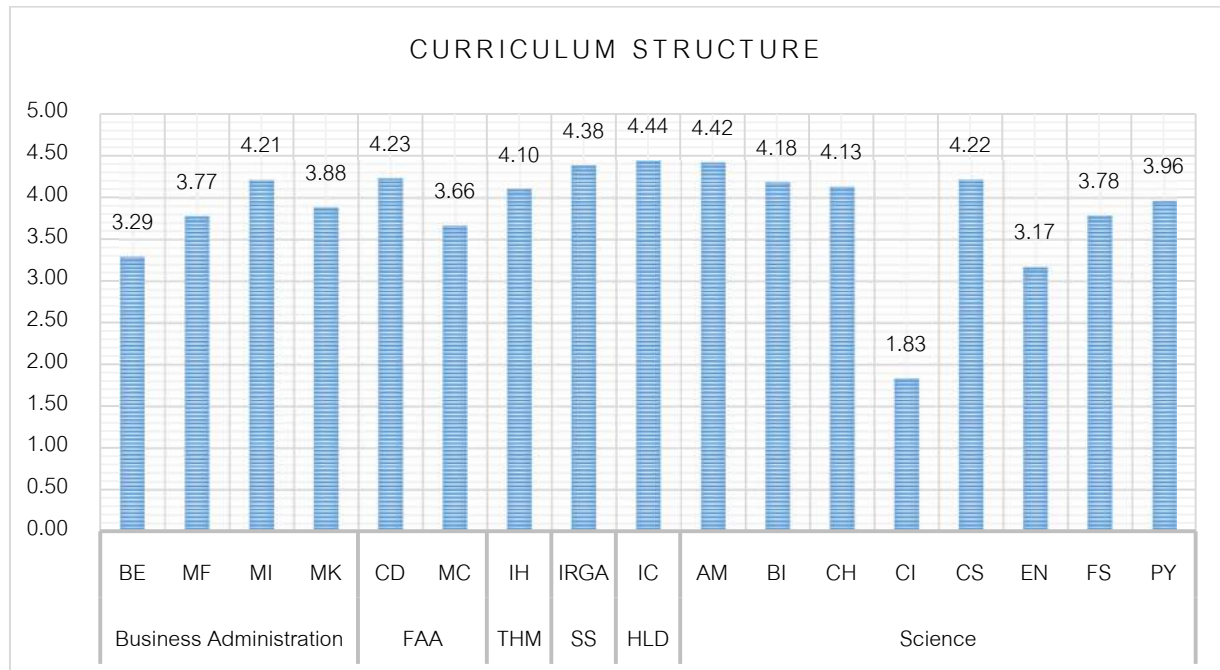


Figure 4: Comparison of Percentage of Graduates' Opinions on the Number of Credits of Curriculum Structure

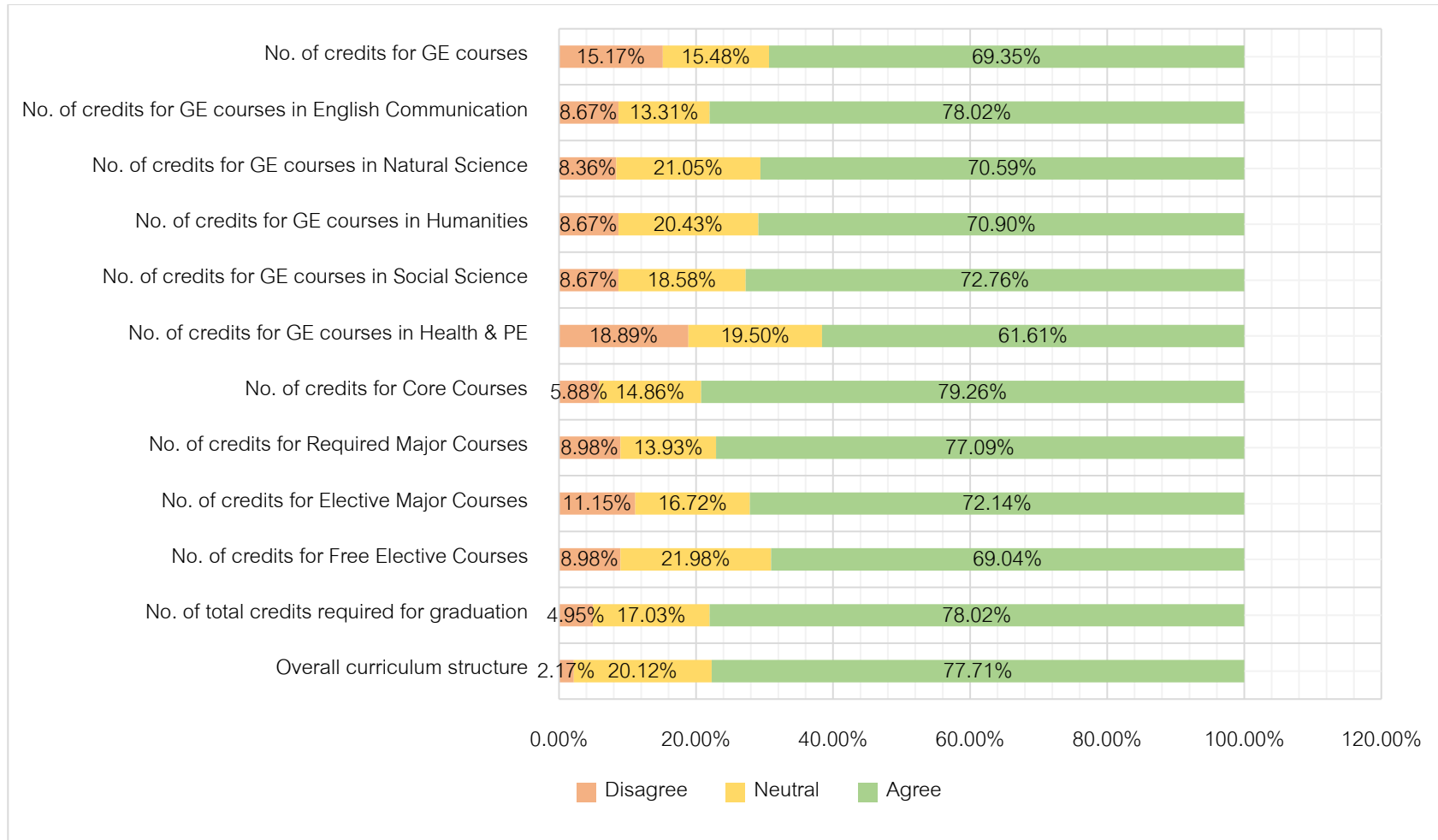


Figure 5: Comparison of Percentage of Graduates Who Disagree on the Number of Credits of Curriculum Structure

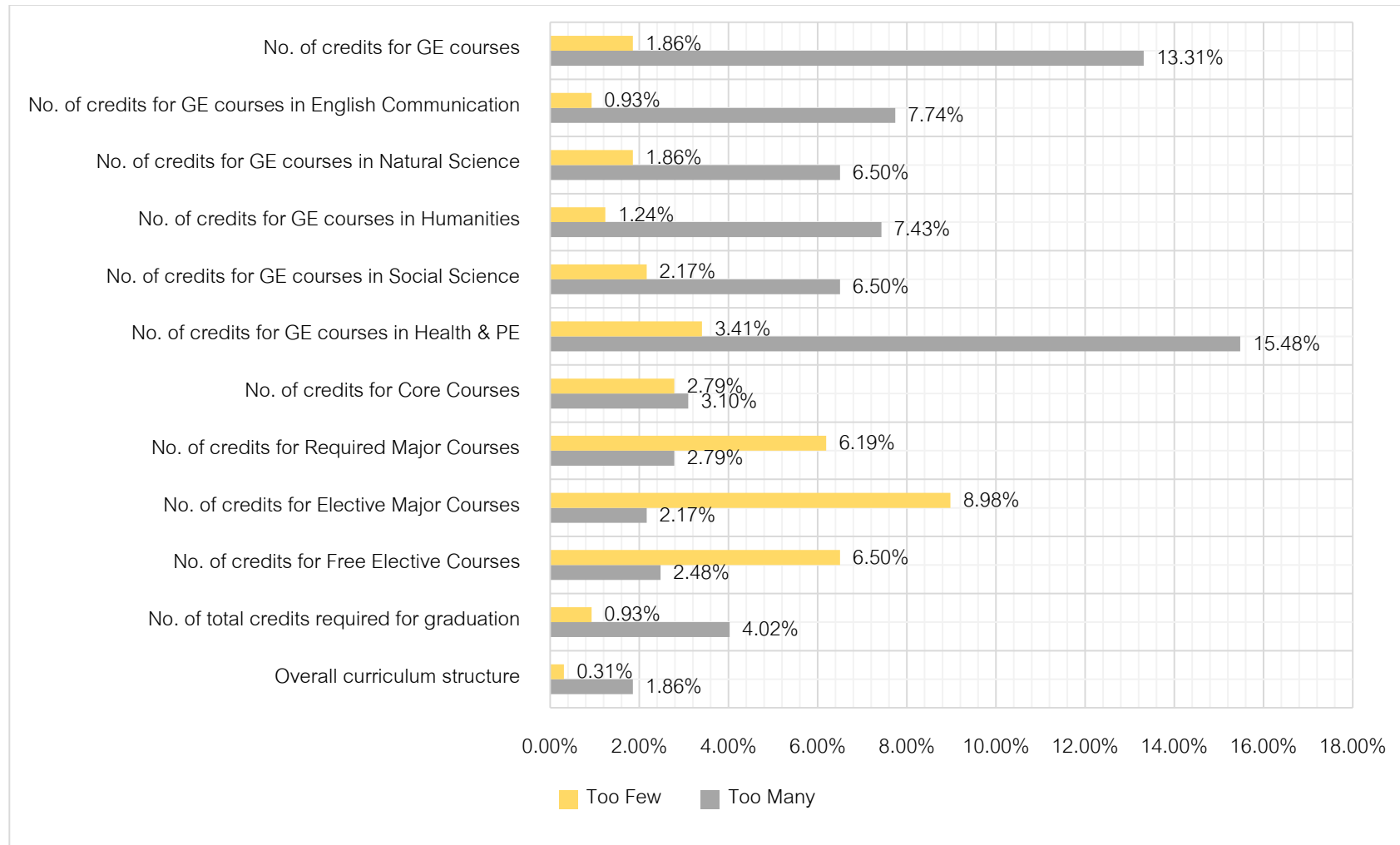


Table 4: Mean and Percentage of Graduates' Opinions on Curriculum Content

3. Curriculum Content	Opinion Level by Program 2023-2024																												
	Business Administration												Fine and Applied Arts						THM			SS			HLD				
	BE (N = 11)			MF (N = 27)			MI (N = 30)			MK (N = 25)			CD (N = 18)			MC (N = 30)			IH (N = 30)			IRGA (N = 55)			IC (N = 24)				
	M	SD	% of Satisfaction at level 4&5	M	SD	% of Satisfaction at level 4&5	M	SD	% of Satisfaction at level 4&5	M	SD	% of Satisfaction at level 4&5	M	SD	% of Satisfaction at level 4&5	M	SD	% of Satisfaction at level 4&5	M	SD	% of Satisfaction at level 4&5	M	SD	% of Satisfaction at level 4&5	M	SD	% of Satisfaction at level 4&5	M	SD
3.1 The course contents can be applied to your professional career.	3.82	0.75	63.64%	4.30	0.78	81.48%	4.43	0.90	90.00%	4.04	0.84	76.00%	4.44	0.62	94.44%	3.77	0.86	70.00%	4.37	0.89	86.67%	4.18	0.86	74.55%	4.00	1.02	79.17%		
3.2 The course contents are beneficial for society.	4.00	0.77	72.73%	4.22	0.80	77.78%	4.47	0.68	90.00%	4.04	0.68	80.00%	4.44	0.70	88.89%	4.00	0.91	76.67%	4.40	0.77	83.33%	4.44	0.74	85.45%	4.54	0.51	100.00%		
3.3 The course contents provide the basic knowledge for further education and innovation.	4.18	0.75	81.82%	4.33	0.78	88.89%	4.57	0.68	90.00%	4.12	0.73	80.00%	4.56	0.62	94.44%	3.87	0.90	70.00%	4.60	0.67	90.00%	4.47	0.69	89.09%	4.46	0.66	91.67%		
3.4 The course contents are up-to-date and suitable for current events and technological advancement.	4.18	0.75	81.82%	4.15	0.86	70.37%	4.53	0.68	90.00%	4.04	0.73	76.00%	4.11	1.02	66.67%	3.73	0.83	63.33%	4.47	0.68	90.00%	4.47	0.79	85.45%	4.50	0.59	95.83%		
3.5 The courses within the curriculum are structured with appropriate pre- and post- requisite subject sequence.	3.91	0.94	72.73%	4.07	1.00	77.78%	4.53	0.63	93.33%	4.04	0.84	76.00%	4.22	0.81	77.78%	3.97	0.81	73.33%	4.47	0.73	86.67%	4.42	0.66	90.91%	4.46	0.59	95.83%		
3.6 The course contents meet students' expectations and interests.	3.82	0.75	63.64%	4.11	0.70	81.48%	4.37	0.72	86.67%	3.88	0.88	72.00%	4.11	0.96	72.22%	3.63	0.93	63.33%	4.37	0.72	86.67%	4.38	0.76	87.27%	4.33	0.64	91.67%		
3.7 The course contents match the curriculum objectives.	3.82	0.75	63.64%	4.37	0.69	88.89%	4.63	0.56	96.67%	4.04	0.89	72.00%	4.28	0.89	72.22%	3.97	0.76	76.67%	4.43	0.73	86.67%	4.49	0.69	89.09%	4.50	0.51	100.00%		
Average Score	3.96	0.78	71.43%	4.22	0.80	80.95%	4.50	0.69	90.95%	4.03	0.80	76.00%	4.31	0.80	80.95%	3.85	0.86	70.48%	4.44	0.74	87.14%	4.41	0.74	85.97%	4.40	0.64	93.45%		

Table 4: (-Continued-)

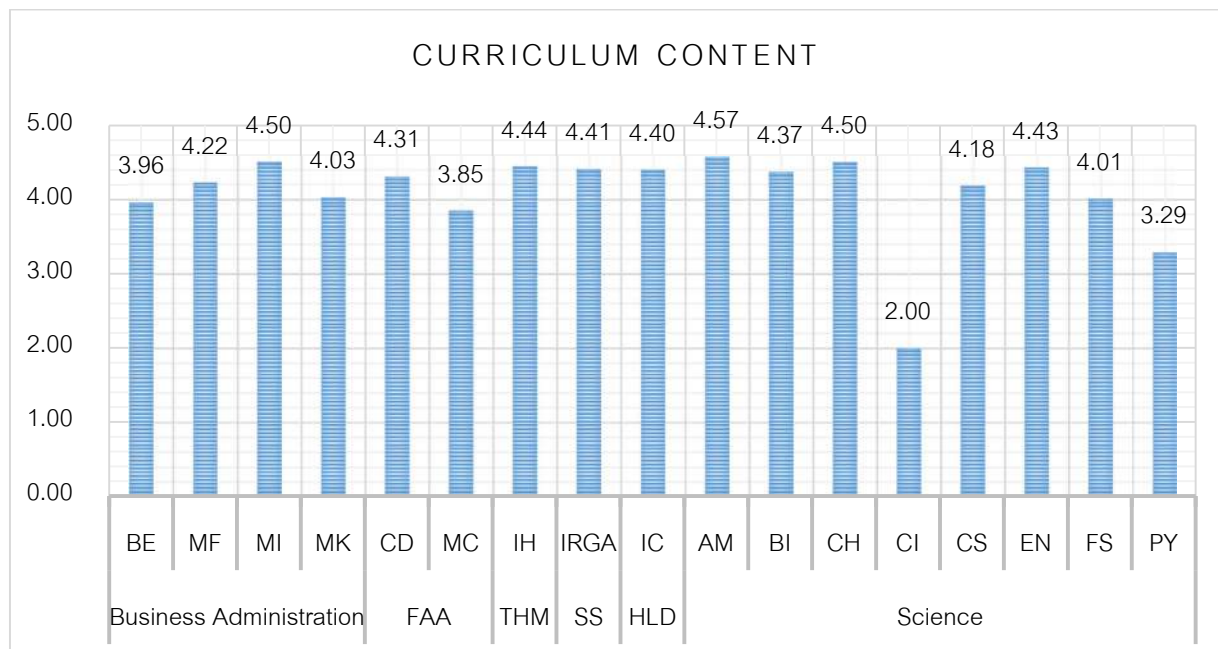
3. Curriculum Content	Opinion Level by Program 2023-2024																												
	Science																					Overall MUIC							
	AM (N = 1)			BI (N = 34)			CH (N = 4)			CI (N = 1)			CS (N = 15)			EN (N = 2)			FS (N = 14)			PY (N = 2)			(N = 323)				
	M	SD	% of Satisfaction at level 4&5	M	SD	% of Satisfaction at level 4&5	M	SD	% of Satisfaction at level 4&5	M	SD	% of Satisfaction at level 4&5	M	SD	% of Satisfaction at level 4&5	M	SD	% of Satisfaction at level 4&5	M	SD	% of Satisfaction at level 4&5	M	SD	% of Satisfaction at level 4&5	M	SD	% of Satisfaction at level 4&5	M	SD
3.1 The course contents can be applied to your professional career.	5.00	.	100.00%	4.50	0.62	94.12%	4.50	0.58	100.00%	1.00	.	0.00%	4.20	0.77	80.00%	4.50	0.71	100.00%	4.50	0.65	92.86%	4.00	.	100.00%	4.09	0.77	81.35%		
3.2 The course contents are beneficial for society.	4.00	.	100.00%	4.32	0.81	85.29%	4.50	1.00	75.00%	2.00	.	0.00%	4.13	0.83	73.33%	4.50	0.71	100.00%	4.00	0.68	78.57%	4.00	1.41	50.00%	4.12	0.80	77.47%		
3.3 The course contents provide the basic knowledge for further education and innovation.	5.00	.	100.00%	4.38	0.74	91.18%	4.75	0.50	100.00%	2.00	.	0.00%	4.53	0.64	93.33%	5.00	.	100.00%	4.36	0.63	92.86%	3.00	.	0.00%	4.25	0.69	79.60%		
3.4 The course contents are up-to-date and suitable for current events and technological advancement.	4.00	.	100.00%	4.29	0.76	88.24%	4.50	0.58	100.00%	1.00	.	0.00%	4.27	0.70	86.67%	4.50	0.71	100.00%	3.93	0.92	71.43%	3.00	1.41	50.00%	3.98	0.80	77.40%		
3.5 The courses within the curriculum are structured with appropriate pre- and post-requisite subject sequence.	5.00	.	100.00%	4.35	0.73	85.29%	4.25	1.50	75.00%	4.00	.	100.00%	3.80	1.21	66.67%	4.00	1.41	50.00%	4.00	0.78	71.43%	3.00	1.41	50.00%	4.15	0.94	78.99%		
3.6 The course contents meet students' expectations and interests.	4.00	.	100.00%	4.24	0.78	85.29%	4.25	0.96	75.00%	1.00	.	0.00%	3.93	1.10	73.33%	4.50	0.71	100.00%	3.29	1.33	42.86%	3.00	1.41	50.00%	3.84	0.89	72.44%		
3.7 The course contents match the curriculum objectives.	5.00	.	100.00%	4.50	0.62	94.12%	4.75	0.50	100.00%	3.00	.	0.00%	4.40	0.63	93.33%	4.00	1.41	50.00%	4.00	0.96	71.43%	3.00	1.41	50.00%	4.19	0.80	76.75%		
Average Score	4.57	.	100.00%	4.37	0.72	89.08%	4.50	0.80	89.29%	2.00	.	14.29%	4.18	0.84	80.95%	4.43	0.94	85.71%	4.01	0.85	74.49%	3.29	1.41	50.00%	4.09	0.81	77.71%		

### MUIC Average Rating Score for Curriculum Content

(Ranked from highest to lowest)

3. Curriculum Content		M	SD
i.	The course contents provide the basic knowledge for further education and innovation.	4.25	0.69
ii.	The course contents match the curriculum objectives.	4.19	0.80
iii.	The courses within the curriculum are structured with appropriate pre- and post- requisite subject sequence.	4.15	0.94
iv.	The course contents are beneficial for society.	4.12	0.80
v.	The course contents can be applied to your professional career.	4.09	0.77
vi.	The course contents are up-to-date and suitable for current events and technological advancement.	3.98	0.80
vii.	The course contents meet students' expectations and interests.	3.84	0.89
Average Score		<u>4.09</u>	<u>0.81</u>

Figure 6: Comparison of Mean Scores of Curriculum Content by Program



❖ Student's Qualifications

Table 5: Mean and Percentage of the Graduates' Opinions on Student's Qualifications

4. The Student's Qualifications	Opinion Level by Program 2023-2024																												
	Business Administration									Fine and Applied Arts						THM			SS			HLD							
	BE (N = 11)			MF (N = 27)			MI (N = 30)			MK (N = 25)			CD (N = 18)			MC (N = 30)			IH (N = 30)			IRGA (N = 55)			IC (N = 24)				
	M	SD	% of Satisfaction at level 4&5	M	SD	% of Satisfaction at level 4&5	M	SD	% of Satisfaction at level 4&5	M	SD	% of Satisfaction at level 4&5	M	SD	% of Satisfaction at level 4&5	M	SD	% of Satisfaction at level 4&5	M	SD	% of Satisfaction at level 4&5	M	SD	% of Satisfaction at level 4&5	M	SD	% of Satisfaction at level 4&5	M	SD
4.1 Graduate on a high school level or its equivalent.	4.18	0.87	72.73%	4.48	0.80	88.89%	4.70	0.60	93.33%	4.20	0.82	84.00%	4.67	0.49	100.00%	4.20	0.76	80.00%	4.63	0.67	90.00%	4.65	0.64	90.91%	4.79	0.41	100.00%		
4.2 Achieve an English test score: TOEFL iBT $\geq$ 69; IELTS $\geq$ 6.0; PTE (Academic) Overall 50; Duolingo Overall 100	4.00	0.77	72.73%	4.33	1.07	88.89%	4.60	0.72	93.33%	4.48	0.71	88.00%	4.67	0.49	100.00%	4.13	0.97	76.67%	4.50	0.90	86.67%	4.55	0.74	89.09%	4.79	0.51	95.83%		
4.3 Achieve an Math test score: SAT (Math Score) $\geq$ 500 - 600; ACT (Math Score) $\geq$ 18 - 25 (Excepts CD, IRGA & CU)	4.18	0.87	72.73%	4.52	0.80	88.89%	4.57	0.77	90.00%	4.40	0.76	84.00%	4.00	1.14	77.78%	4.00	0.83	73.33%	4.43	0.82	86.67%	4.22	1.10	80.00%	4.13	1.15	70.83%		
4.4 Pass the MUIC Entrance Examination	4.09	0.83	72.73%	4.37	0.93	88.89%	4.67	0.61	93.33%	4.40	0.82	88.00%	4.44	0.98	94.44%	4.27	0.83	83.33%	4.47	0.82	86.67%	4.58	0.83	87.27%	4.75	0.61	91.67%		
Average Score	4.11	0.84	72.73%	4.43	0.90	88.89%	4.63	0.68	92.50%	4.37	0.78	86.00%	4.44	0.77	93.06%	4.15	0.85	78.33%	4.51	0.80	87.50%	4.50	0.83	86.82%	4.61	0.67	89.58%		

Table 5: (-Continued-)

4. The Student's Qualifications	Opinion Level by Program 2023-2024																												
	Science																					Overall MUIC							
	AM (N = 1)			BI (N = 34)			CH (N =4)			CI (N = 1)			CS (N = 15)			EN (N = 2)			FS (N = 14)			PY (N = 2)			(N = 323)				
	M	SD	% of Satisfaction at level 4&5	M	SD	% of Satisfaction at level 4&5	M	SD	% of Satisfaction at level 4&5	M	SD	% of Satisfaction at level 4&5	M	SD	% of Satisfaction at level 4&5	M	SD	% of Satisfaction at level 4&5	M	SD	% of Satisfaction at level 4&5	M	SD	% of Satisfaction at level 4&5	M	SD	% of Satisfaction at level 4&5	M	SD
4.1 Graduate on a high school level or its equivalent.	5.00	.	100.00%	4.68	0.53	97.06%	5.00	.	100.00%	5.00	.	100.00%	4.67	0.62	93.33%	3.00	2.83	50.00%	4.50	0.76	85.71%	4.00	1.41	50.00%	4.49	0.87	86.82%		
4.2 Achieve an English test score: TOEFL iBT $\geq$ 69; IELTS $\geq$ 6.0; PTE (Academic) Overall 50; Duolingo Overall 100	4.00	.	100.00%	4.56	0.93	91.18%	4.75	0.50	100.00%	3.00	.	0.00%	4.20	0.94	80.00%	3.00	2.83	50.00%	4.43	0.85	78.57%	4.50	0.71	100.00%	4.26	0.91	81.82%		
4.3 Achieve an Math test score: SAT (Math Score) $\geq$ 500 - 600; ACT (Math Score) $\geq$ 18 - 25 (Excepts CD, IRGA & CU)	5.00	.	100.00%	4.56	0.86	91.18%	5.00	.	100.00%	3.00	.	0.00%	4.07	1.10	73.33%	3.00	2.83	50.00%	4.14	0.95	78.57%	4.50	0.71	100.00%	4.22	1.05	77.49%		
4.4 Pass the MUIC Entrance Examination	4.00	.	100.00%	4.68	0.64	91.18%	4.50	1.00	75.00%	5.00	.	100.00%	4.53	0.74	86.67%	3.00	2.83	50.00%	4.36	1.01	78.57%	4.50	0.71	100.00%	4.39	0.95	86.34%		
Average Score	4.50	.	100.00%	4.62	0.74	92.65%	4.81	0.75	93.75%	4.00	.	50.00%	4.37	0.85	83.33%	3.00	2.83	50.00%	4.36	0.89	80.36%	4.38	0.88	87.50%	4.34	0.94	83.12%		

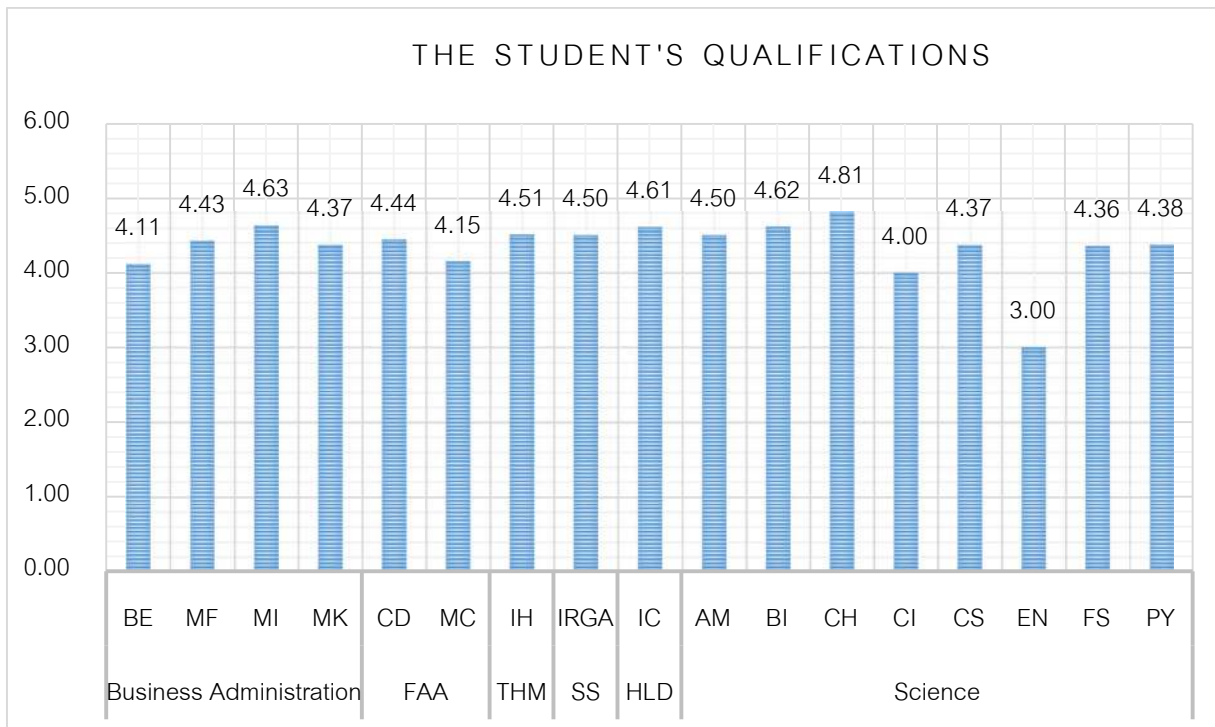


### MUIC Average Rating Score for the Student's Qualification

[Ranked from highest to lowest]

4. The Student's Qualifications		M	SD
i.	Graduate on a high school level or its equivalent.	4.49	0.87
ii.	Pass the MUIC Entrance Examination	4.39	0.95
iii.	Achieve an English test score: TOEFL iBT $\geq$ 69; IELTS $\geq$ 6.0; PTE (Academic) Overall 50; Duolingo Overall 100	4.26	0.91
iv.	Achieve an Math test score: SAT (Math Score) $\geq$ 500 - 600; ACT (Math Score) $\geq$ 18 - 25 (Excepts CD, IRGA & CU)	4.22	1.05
Average Score		4.34	0.94

Figure 7: Comparison of Mean Scores of Student's Qualifications by Program



Program's Lecturers

Table 6: Mean and Percentage of the Graduates' Opinions on Program's Lecturers

5. Program's Lecturers	Opinion Level by Program 2023-2024																										
	Business Administration												Fine and Applied Arts						THM			SS			HLD		
	BE (N = 11)			MF (N = 27)			MI (N = 30)			MK (N = 25)			CD (N = 18)			MC (N = 30)			IH (N = 30)			IRGA (N = 55)			IC (N = 24)		
	M	SD	% of Satisfaction at level 4&5	M	SD	% of Satisfaction at level 4&5	M	SD	% of Satisfaction at level 4&5	M	SD	% of Satisfaction at level 4&5	M	SD	% of Satisfaction at level 4&5	M	SD	% of Satisfaction at level 4&5	M	SD	% of Satisfaction at level 4&5	M	SD	% of Satisfaction at level 4&5	M	SD	% of Satisfaction at level 4&5
5.1 The number of lecturers is sufficient for the program.	3.55	0.82	54.55%	3.81	1.21	74.07%	4.40	0.67	90.00%	3.84	1.03	72.00%	4.17	0.86	83.33%	3.93	1.05	76.67%	4.20	0.89	76.67%	3.91	1.16	69.09%	4.33	1.01	83.33%
5.2 Lecturers have knowledge/expertise/experience in the teaching field.	4.09	0.70	81.82%	4.56	0.51	100.00%	4.60	0.62	93.33%	4.28	0.79	80.00%	4.50	0.71	88.89%	4.17	0.75	80.00%	4.60	0.62	93.33%	4.67	0.51	98.18%	4.79	0.41	100.00%
5.3 Lecturers can convey knowledge/experience to students and motivate them to become more active and interested in studying.	3.91	0.54	81.82%	4.22	0.85	81.48%	4.57	0.63	93.33%	4.12	0.78	76.00%	4.56	0.62	94.44%	4.10	0.71	80.00%	4.50	0.68	90.00%	4.47	0.66	90.91%	4.71	0.46	100.00%
5.4 Lecturers are well versed in innovative changes and can integrate a variety of concepts.	4.00	0.45	90.91%	4.30	0.72	85.19%	4.53	0.63	93.33%	4.20	0.71	84.00%	4.28	0.67	88.89%	4.03	0.85	73.33%	4.47	0.73	86.67%	4.56	0.69	89.09%	4.79	0.41	100.00%
5.5 Lecturers give students an opportunity to express opinions.	4.09	0.83	72.73%	4.44	0.85	85.19%	4.60	0.56	96.67%	4.32	0.85	84.00%	4.78	0.55	94.44%	4.17	0.79	83.33%	4.60	0.67	90.00%	4.69	0.54	96.36%	4.92	0.28	100.00%
5.6 Lecturers have morals and a commitment to teaching.	4.09	0.54	90.91%	4.33	0.96	88.89%	4.53	0.57	96.67%	4.24	0.78	80.00%	4.33	0.69	88.89%	4.23	0.82	83.33%	4.60	0.67	90.00%	4.62	0.59	94.55%	4.83	0.38	100.00%
5.7 Lecturers use proper materials, equipment and techniques in teaching.	4.18	0.60	90.91%	4.37	0.79	88.89%	4.57	0.57	96.67%	4.00	1.04	76.00%	4.50	0.71	88.89%	4.27	0.69	86.67%	4.53	0.68	90.00%	4.53	0.60	94.55%	4.75	0.44	100.00%
Average Score	3.99	0.64	80.52%	4.29	0.84	86.24%	4.54	0.61	94.29%	4.14	0.85	78.86%	4.44	0.68	89.68%	4.13	0.81	80.48%	4.50	0.71	88.10%	4.49	0.68	90.39%	4.73	0.49	97.62%

Table 6: (-Continued-)

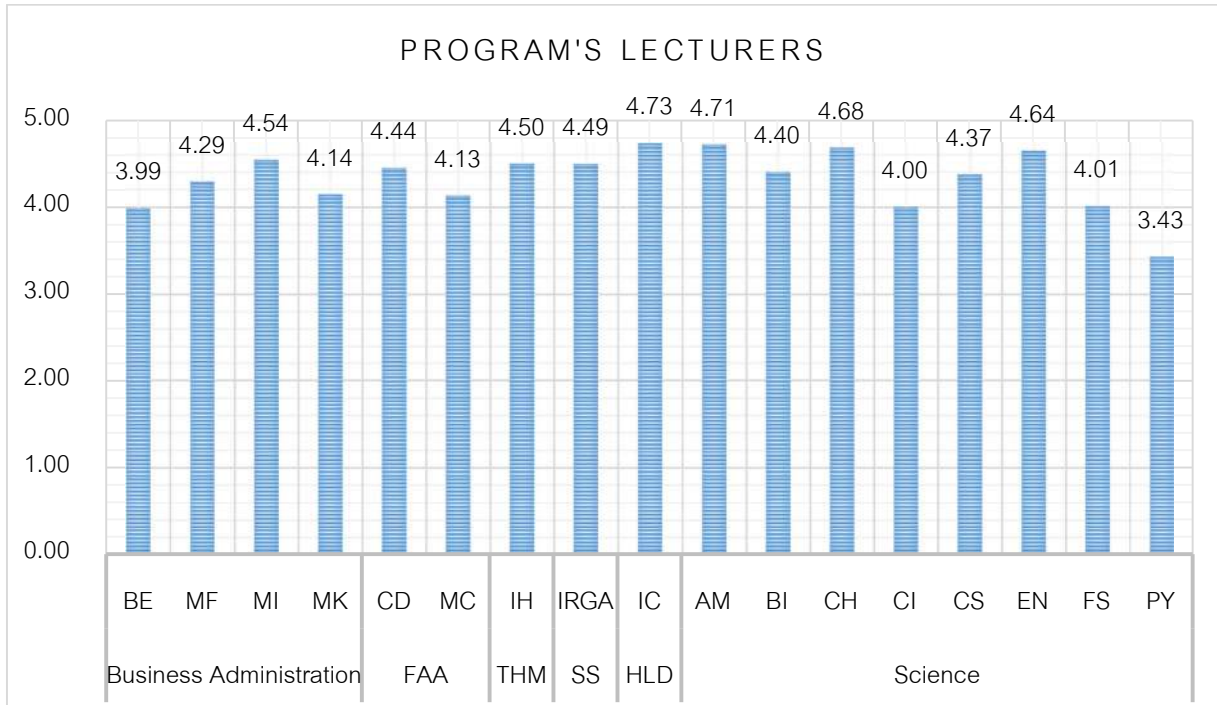
5. Program's Lecturers	Opinion Level by Program 2023-2024																										
	Science																					Overall MUIC					
	AM (N = 1)			BI (N = 34)			CH (N = 4)			CI (N = 1)			CS (N = 15)			EN (N = 2)			FS (N = 14)			PY (N = 2)			(N = 323)		
	M	SD	% of Satisfaction at level 4&5	M	SD	% of Satisfaction at level 4&5	M	SD	% of Satisfaction at level 4&5	M	SD	% of Satisfaction at level 4&5	M	SD	% of Satisfaction at level 4&5	M	SD	% of Satisfaction at level 4&5	M	SD	% of Satisfaction at level 4&5	M	SD	% of Satisfaction at level 4&5	M	SD	% of Satisfaction at level 4&5
5.1 The number of lecturers is sufficient for the program.	5.00	.	100.00%	4.09	1.00	70.59%	4.25	0.96	75.00%	5.00	.	100.00%	3.87	1.06	73.33%	4.50	0.71	100.00%	3.71	1.20	64.29%	2.50	2.12	50.00%	4.06	1.05	77.23%
5.2 Lecturers have knowledge/expertise/experience in the teaching field.	4.00	.	100.00%	4.53	0.56	97.06%	5.00	.	100.00%	4.00	.	100.00%	4.60	0.63	93.33%	5.00	.	100.00%	4.14	0.95	78.57%	4.50	0.71	100.00%	4.47	0.65	93.21%
5.3 Lecturers can convey knowledge/experience to students and motivate them to become more active and interested in studying.	5.00	.	100.00%	4.38	0.78	88.24%	4.50	1.00	75.00%	4.00	.	100.00%	4.47	0.74	86.67%	4.50	0.71	100.00%	3.71	1.07	57.14%	4.00	1.41	50.00%	4.34	0.78	85.00%
5.4 Lecturers are well versed in innovative changes and can integrate a variety of concepts.	4.00	.	100.00%	4.38	0.85	91.18%	4.75	0.50	100.00%	4.00	.	100.00%	4.40	0.74	86.67%	4.00	.	100.00%	3.93	1.00	78.57%	2.50	2.12	50.00%	4.18	0.79	88.11%
5.5 Lecturers give students an opportunity to express opinions.	5.00	.	100.00%	4.50	0.62	94.12%	4.75	0.50	100.00%	4.00	.	100.00%	4.33	0.90	86.67%	5.00	.	100.00%	4.29	0.83	78.57%	3.50	0.71	50.00%	4.47	0.68	88.95%
5.6 Lecturers have morals and a commitment to teaching.	5.00	.	100.00%	4.47	0.66	97.06%	4.75	0.50	100.00%	4.00	.	100.00%	4.40	0.74	86.67%	5.00	.	100.00%	4.07	1.00	71.43%	3.00	2.83	50.00%	4.38	0.84	89.32%
5.7 Lecturers use proper materials, equipment and techniques in teaching.	5.00	.	100.00%	4.44	0.70	88.24%	4.75	0.50	100.00%	3.00	.	0.00%	4.53	0.64	93.33%	4.50	0.71	100.00%	4.21	0.70	85.71%	4.00	1.41	50.00%	4.36	0.72	84.11%
Average Score	4.71	.	100.00%	4.40	0.74	89.50%	4.68	0.66	92.86%	4.00	.	85.71%	4.37	0.78	86.67%	4.64	0.71	100.00%	4.01	0.96	73.47%	3.43	1.62	57.14%	4.32	0.79	86.56%

### MUIC Average Rating Score for Program's Lecturers

[Ranked from highest to lowest]

5. Program's Lecturers		M	SD
i.	Lecturers have knowledge/expertise/experience in the teaching field.	4.47	0.65
ii.	Lecturers give students an opportunity to express opinions.	4.47	0.68
iii.	Lecturers have morals and a commitment to teaching.	4.38	0.84
iv.	Lecturers use proper materials, equipment and techniques in teaching.	4.36	0.72
v.	Lecturers can convey knowledge/experience to students and motivate them to become more active and interested in studying.	4.34	0.78
vi.	Lecturers are well versed in innovative changes and can integrate a variety of concepts.	4.18	0.79
vii.	The number of lecturers is sufficient for the program.	4.06	1.05
Average Score		<u>4.32</u>	<u>0.79</u>

Figure 8: Comparison of Mean Score of Program's Lecturers by Program



❖ Advisor's Qualifications

Table 7: Mean and Percentage of the Graduates' Opinions on Advisor's Qualifications

6. Advisor's Qualifications	Opinion Level by Program 2023-2024																										
	Business Administration									Fine and Applied Arts						THM			SS			HLD					
	BE (N = 11)			MF (N = 27)			MI (N = 30)			MK (N = 25)			CD (N = 18)			MC (N = 30)			IH (N = 30)			IRGA (N = 55)			IC (N = 24)		
	M	SD	% of Satisfaction at level 4&5	M	SD	% of Satisfaction at level 4&5	M	SD	% of Satisfaction at level 4&5	M	SD	% of Satisfaction at level 4&5	M	SD	% of Satisfaction at level 4&5	M	SD	% of Satisfaction at level 4&5	M	SD	% of Satisfaction at level 4&5	M	SD	% of Satisfaction at level 4&5	M	SD	% of Satisfaction at level 4&5
6.1 The system designed for advisors to meet with students is appropriate.	3.45	0.82	45.45%	4.07	1.14	74.07%	4.03	1.00	66.67%	4.00	0.91	76.00%	3.94	1.16	61.11%	3.60	1.07	56.67%	4.13	1.07	73.33%	3.98	1.05	70.91%	4.54	0.66	91.67%
6.2 Advisors closely follow up on students' learning outcomes.	3.27	0.79	27.27%	3.74	1.35	62.96%	3.73	1.08	53.33%	3.96	1.06	68.00%	4.17	0.99	72.22%	3.73	1.11	63.33%	4.30	1.09	76.67%	3.82	1.25	61.82%	4.04	1.12	79.17%
6.3 Advisors give students assistance or advice on study plans.	3.55	0.93	45.45%	3.96	1.29	70.37%	3.77	1.14	50.00%	4.00	1.04	72.00%	4.33	0.84	77.78%	3.63	1.03	60.00%	4.43	0.82	86.67%	4.00	1.07	69.09%	4.33	0.92	79.17%
6.4 Advisors suggest opportunities for further studies or careers.	3.45	1.04	45.45%	3.89	1.31	70.37%	3.83	1.21	53.33%	3.96	1.06	68.00%	4.11	1.02	66.67%	3.50	1.25	56.67%	4.23	1.14	80.00%	3.93	1.14	61.82%	4.21	0.98	83.33%
Average Score	3.43	0.89	40.91%	3.92	1.27	69.44%	3.84	1.11	55.83%	3.98	1.02	71.00%	4.14	1.00	69.44%	3.62	1.12	59.17%	4.28	1.03	79.17%	3.93	1.13	65.91%	4.28	0.92	83.33%

Table 7: (-Continued-)

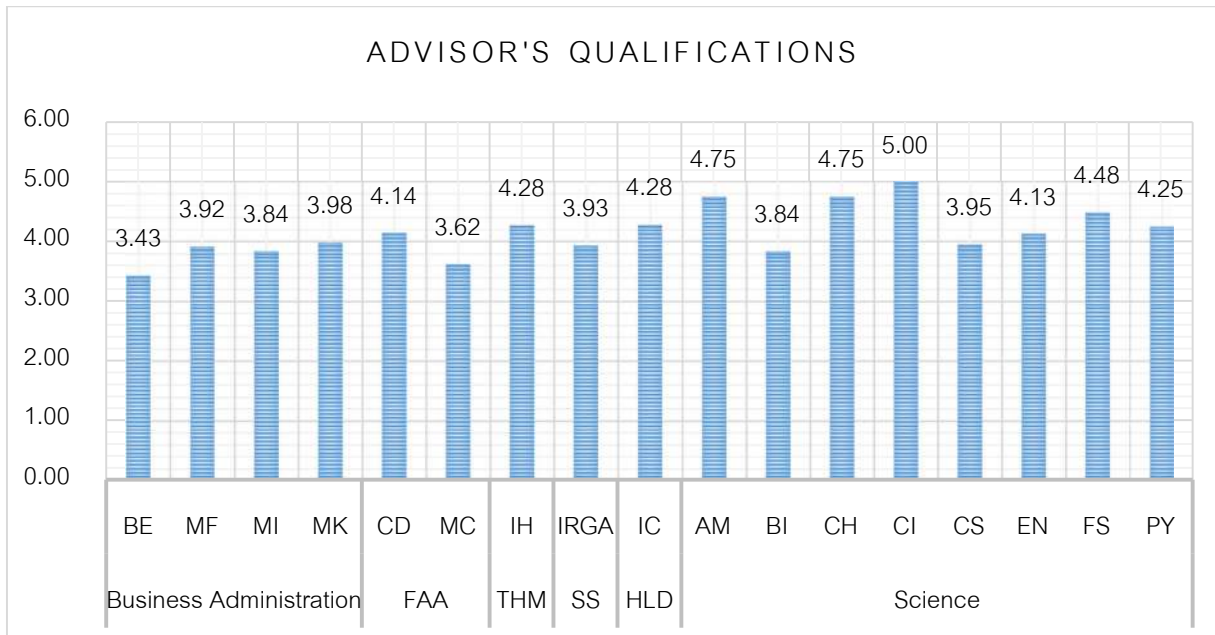
6. Advisor's Qualifications	Opinion Level by Program 2023-2024																												
	Science																					Overall MUIC							
	AM (N = 1)			BI (N = 34)			CH (N = 4)			CI (N = 1)			CS (N = 15)			EN (N = 2)			FS (N = 14)			PY (N = 2)			(N = 323)				
	M	SD	% of Satisfaction at level 4&5	M	SD	% of Satisfaction at level 4&5	M	SD	% of Satisfaction at level 4&5	M	SD	% of Satisfaction at level 4&5	M	SD	% of Satisfaction at level 4&5	M	SD	% of Satisfaction at level 4&5	M	SD	% of Satisfaction at level 4&5	M	SD	% of Satisfaction at level 4&5	M	SD	% of Satisfaction at level 4&5	M	SD
6.1 The system designed for advisors to meet with students is appropriate.	5.00	.	100.00%	3.82	1.31	64.71%	4.75	0.50	100.00%	5.00	.	100.00%	3.80	1.01	53.33%	3.50	0.71	50.00%	4.43	0.65	92.86%	5.00	.	100.00%	4.18	0.93	75.10%		
6.2 Advisors closely follow up on students' learning outcomes.	5.00	.	100.00%	3.65	1.43	64.71%	4.50	1.00	75.00%	5.00	.	100.00%	3.80	1.01	53.33%	4.00	.	100.00%	4.43	0.65	92.86%	4.00	1.41	50.00%	4.07	1.10	70.63%		
6.3 Advisors give students assistance or advice on study plans.	4.00	.	100.00%	3.97	1.27	67.65%	4.75	0.50	100.00%	5.00	.	100.00%	4.07	0.80	73.33%	4.50	0.71	100.00%	4.57	0.65	92.86%	4.00	1.41	50.00%	4.17	0.96	76.14%		
6.4 Advisors suggest opportunities for further studies or careers.	5.00	.	100.00%	3.91	1.22	67.65%	5.00	.	100.00%	5.00	.	100.00%	4.13	0.83	73.33%	4.50	0.71	100.00%	4.50	0.65	92.86%	4.00	1.41	50.00%	4.19	1.07	74.68%		
Average Score	4.75	.	100.00%	3.84	1.31	66.18%	4.75	0.67	93.75%	5.00	.	100.00%	3.95	0.92	63.33%	4.13	0.71	87.50%	4.48	0.65	92.86%	4.25	1.41	62.50%	4.15	1.01	74.14%		

### MUIC Average Rating Score for Advisor's Qualifications

[Ranked from highest to lowest]

6. Advisor's Qualifications		M	SD
i.	Advisors suggest opportunities for further studies or careers.	4.19	1.07
ii.	The system designed for advisors to meet with students is appropriate.	4.18	0.93
iii.	Advisors give students assistance or advice on study plans.	4.17	0.96
iv.	Advisors closely follow up on students' learning outcomes.	4.07	1.10
Average Score		<u>4.15</u>	<u>1.01</u>

Figure 9: Comparison of Mean Scores of Advisor's Qualifications by Program



Support Services

Table 8: Mean and Percentage of the Graduates' Opinions on Support Services (Educational Materials, textbooks, Buildings, and Sites)

7. Support Services	Opinion Level by Program 2023-2024																												
	Business Administration									Fine and Applied Arts						THM			SS			HLD							
	BE (N = 11)			MF (N = 27)			MI (N = 30)			MK (N = 25)			CD (N = 18)			MC (N = 30)			IH (N = 30)			IRGA (N = 55)			IC (N = 24)				
	M	SD	% of Satisfaction at level 4&5	M	SD	% of Satisfaction at level 4&5	M	SD	% of Satisfaction at level 4&5	M	SD	% of Satisfaction at level 4&5	M	SD	% of Satisfaction at level 4&5	M	SD	% of Satisfaction at level 4&5	M	SD	% of Satisfaction at level 4&5	M	SD	% of Satisfaction at level 4&5	M	SD	% of Satisfaction at level 4&5	M	SD
7.1 Course materials match the subject's content and are up-to-date.	3.73	0.79	54.55%	4.37	0.69	88.89%	4.47	0.73	86.67%	3.96	0.79	76.00%	4.06	0.73	77.78%	3.83	0.79	73.33%	4.43	0.68	90.00%	4.42	0.71	87.27%	4.71	0.46	100.00%		
7.2 Support staff is knowledgeable and give suggestions appropriately.	3.82	0.87	54.55%	4.30	0.72	85.19%	4.50	0.78	83.33%	4.20	0.76	80.00%	4.28	0.67	88.89%	3.90	0.84	66.67%	4.30	0.79	80.00%	4.51	0.66	90.91%	4.67	0.56	95.83%		
7.3 Support staff is friendly and committed to service.	3.82	0.87	54.55%	4.22	0.89	77.78%	4.43	0.86	83.33%	4.08	0.86	76.00%	4.44	0.62	94.44%	3.87	0.78	70.00%	4.17	0.87	76.67%	4.35	0.82	81.82%	4.63	0.71	95.83%		
7.4 Information is announced to the students in a timely manner.	3.73	1.19	63.64%	4.19	0.96	70.37%	4.30	0.88	86.67%	4.20	0.87	80.00%	4.06	1.06	77.78%	3.80	0.81	63.33%	4.37	0.76	83.33%	4.45	0.69	89.09%	4.63	0.49	100.00%		
7.5 Information about service procedures is thoroughly provided for the students.	3.73	1.19	63.64%	4.15	0.95	70.37%	4.43	0.94	83.33%	4.12	0.88	76.00%	4.22	0.81	88.89%	3.90	0.61	76.67%	4.40	0.81	80.00%	4.31	0.79	87.27%	4.71	0.55	95.83%		
7.6 Service request forms are accessible for students.	3.73	0.79	54.55%	4.44	0.75	85.19%	4.47	0.78	83.33%	4.16	0.75	80.00%	4.33	0.69	88.89%	4.10	0.76	76.67%	4.40	0.77	83.33%	4.49	0.74	89.09%	4.46	0.98	87.50%		
7.7 Audio-visual equipment is adequately provided in classrooms.	3.82	0.75	63.64%	4.41	0.69	88.89%	4.53	0.63	93.33%	4.16	0.75	80.00%	4.17	1.10	77.78%	3.83	0.87	73.33%	4.33	0.88	80.00%	4.56	0.66	90.91%	4.67	0.64	91.67%		
7.8 The ratio of computers available to students is appropriate.	3.73	0.79	54.55%	4.44	0.70	88.89%	4.50	0.63	93.33%	4.20	0.91	76.00%	3.94	1.11	66.67%	3.83	1.02	70.00%	4.37	0.76	83.33%	4.35	0.80	80.00%	4.54	0.51	100.00%		
7.9 Textbooks, documents and other media in the library are up-to-date and adequate.	3.64	0.81	45.45%	4.22	1.01	85.19%	4.47	0.78	83.33%	4.16	0.80	76.00%	4.17	0.71	83.33%	3.90	0.84	73.33%	4.33	0.80	80.00%	4.44	0.71	87.27%	4.46	0.66	91.67%		
7.10 Educational materials and lab equipment available to students are adequate.	3.91	0.70	72.73%	4.22	0.93	81.48%	4.47	0.90	90.00%	4.28	0.79	80.00%	4.11	1.08	77.78%	3.73	1.08	66.67%	4.33	0.88	80.00%	4.44	0.74	85.45%	4.63	0.49	100.00%		
7.11 Learning resources and online research databases available to students are adequate.	3.91	0.83	63.64%	4.37	0.97	85.19%	4.40	0.81	86.67%	4.28	0.79	80.00%	4.06	1.06	77.78%	4.03	0.85	73.33%	4.40	0.77	83.33%	4.42	0.79	89.09%	4.67	0.48	100.00%		
7.12 Labs and internship facilities suit the study program and subjects taught in the program.	3.64	0.81	45.45%	4.33	0.92	88.89%	4.27	0.94	83.33%	4.32	0.75	84.00%	3.83	1.10	72.22%	3.70	0.95	66.67%	4.30	0.95	80.00%	4.36	0.89	85.45%	4.17	1.05	83.33%		
Average Score	3.77	0.87	57.58%	4.31	0.85	83.02%	4.44	0.80	86.39%	4.18	0.81	78.67%	4.14	0.89	81.02%	3.87	0.85	70.83%	4.34	0.81	81.67%	4.42	0.75	86.97%	4.58	0.63	95.14%		

A Report on Graduates Survey for the Academic Year 2023-2024.

Academic Strategy Unit, Strategy and Academic Development Group, the Office of Educational Affairs.

November 2024



Table 8: (-Continued-)

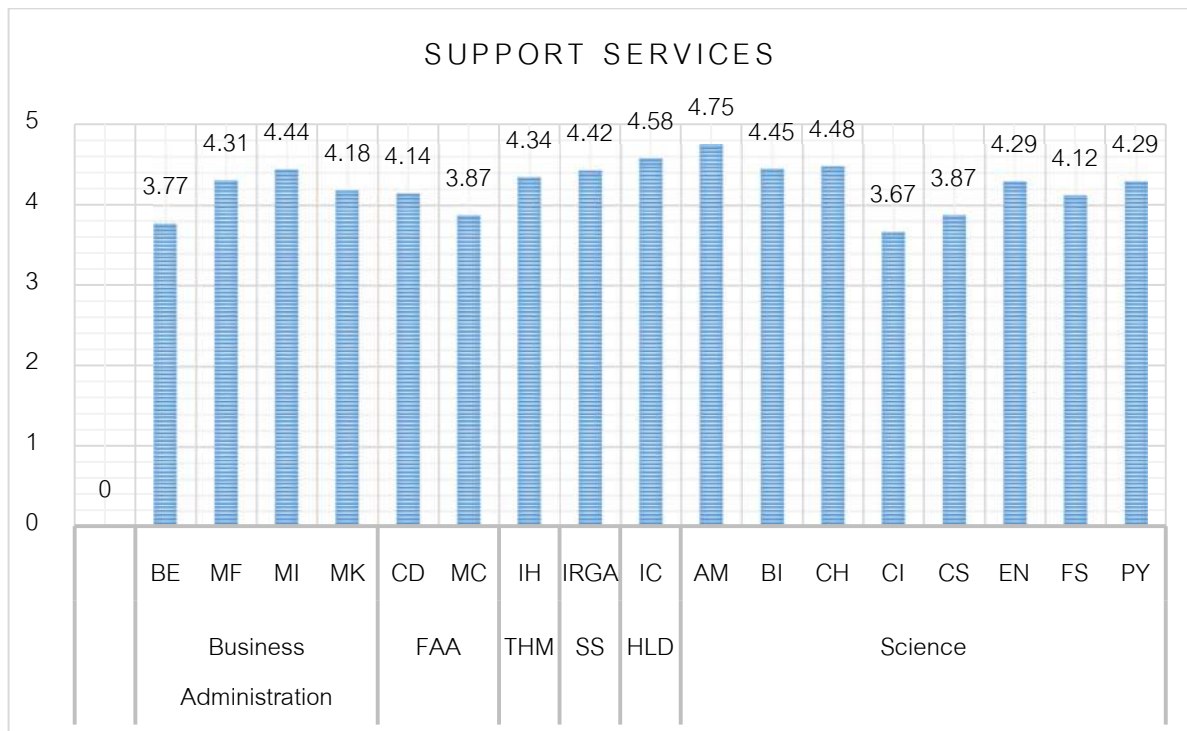
7. Support Services	Opinion Level by Program 2023-2024																												
	Science																					Overall MUIC							
	AM (N = 1)			BI (N = 34)			CH (N = 4)			CI (N = 1)			CS (N = 15)			EN (N = 2)			FS (N = 14)			PY (N = 2)			(N = 323)				
	M	SD	% of Satisfaction at level 4&5	M	SD	% of Satisfaction at level 4&5	M	SD	% of Satisfaction at level 4&5	M	SD	% of Satisfaction at level 4&5	M	SD	% of Satisfaction at level 4&5	M	SD	% of Satisfaction at level 4&5	M	SD	% of Satisfaction at level 4&5	M	SD	% of Satisfaction at level 4&5	M	SD	% of Satisfaction at level 4&5	M	SD
7.1 Course materials match the subject's content and are up-to-date.	5.00	.	100.00%	4.44	0.66	91.18%	4.25	0.96	75.00%	1.00	.	0.00%	4.33	0.72	86.67%	4.50	0.71	100.00%	4.07	0.92	78.57%	5.00	.	100.00%	4.15	0.74	80.35%		
7.2 Support staff is knowledgeable and give suggestions appropriately.	4.00	.	100.00%	4.41	0.70	88.24%	4.75	0.50	100.00%	4.00	.	100.00%	3.93	0.96	66.67%	4.50	0.71	100.00%	4.29	0.73	85.71%	5.00	.	100.00%	4.31	0.73	86.23%		
7.3 Support staff is friendly and committed to service.	5.00	.	100.00%	4.41	0.74	85.29%	4.75	0.50	100.00%	4.00	.	100.00%	3.80	0.94	60.00%	3.50	0.71	50.00%	4.21	0.70	85.71%	5.00	.	100.00%	4.28	0.78	81.85%		
7.4 Information is announced to the students in a timely manner.	5.00	.	100.00%	4.35	0.81	85.29%	4.25	0.96	75.00%	4.00	.	100.00%	3.60	0.99	53.33%	3.00	.	0.00%	4.07	1.00	71.43%	5.00	.	100.00%	4.18	0.88	76.43%		
7.5 Information about service procedures is thoroughly provided for the students.	5.00	.	100.00%	4.24	1.07	82.35%	4.50	0.58	100.00%	4.00	.	100.00%	3.53	1.06	53.33%	4.00	.	100.00%	4.14	0.86	71.43%	5.00	.	100.00%	4.26	0.85	84.07%		
7.6 Service request forms are accessible for students.	5.00	.	100.00%	4.65	0.60	94.12%	4.75	0.50	100.00%	4.00	.	100.00%	3.87	0.92	66.67%	4.50	0.71	100.00%	4.29	0.83	78.57%	4.50	0.71	100.00%	4.36	0.75	86.35%		
7.7 Audio-visual equipment is adequately provided in classrooms.	4.00	.	100.00%	4.56	0.61	94.12%	4.50	0.58	100.00%	2.00	.	0.00%	3.80	1.21	66.67%	5.00	.	100.00%	4.00	1.11	71.43%	5.00	.	100.00%	4.20	0.81	80.69%		
7.8 The ratio of computers available to students is appropriate.	5.00	.	100.00%	4.53	0.71	88.24%	4.75	0.50	100.00%	3.00	.	0.00%	3.93	1.16	66.67%	5.00	.	100.00%	4.36	0.74	85.71%	5.00	.	100.00%	4.32	0.80	79.61%		
7.9 Textbooks, documents and other media in the library are up-to-date and adequate.	4.00	.	100.00%	4.32	0.94	82.35%	4.25	0.96	75.00%	3.00	.	0.00%	3.80	1.08	66.67%	4.50	0.71	100.00%	4.07	1.00	71.43%	4.00	1.41	50.00%	4.10	0.88	73.59%		
7.10 Educational materials and lab equipment available to students are adequate.	5.00	.	100.00%	4.44	0.75	91.18%	4.75	0.50	100.00%	5.00	.	100.00%	3.87	0.92	66.67%	5.00	.	100.00%	3.86	1.23	71.43%	3.00	2.83	50.00%	4.30	0.99	83.14%		
7.11 Learning resources and online research databases available to students are adequate.	5.00	.	100.00%	4.56	0.66	91.18%	3.75	1.50	50.00%	5.00	.	100.00%	3.93	1.16	73.33%	4.00	.	100.00%	4.14	0.95	78.57%	2.50	2.12	50.00%	4.20	0.98	81.30%		
7.12 Labs and internship facilities suit the study program and subjects taught in the program.	5.00	.	100.00%	4.44	0.75	91.18%	4.50	1.00	75.00%	5.00	.	100.00%	4.07	0.96	73.33%	4.00	1.41	50.00%	3.93	1.21	78.57%	2.50	2.12	50.00%	4.14	1.05	76.91%		
Average Score	4.75	.	100.00%	4.45	0.75	88.73%	4.48	0.75	87.50%	3.67	.	66.67%	3.87	1.01	66.67%	4.29	0.82	83.33%	4.12	0.94	77.38%	4.29	1.84	83.33%	4.23	0.85	80.88%		

## MUIC Average Rating Score for Support Services

[Ranked from highest to lowest]

7. Support Services	M	SD
i. Service request forms are accessible for students.	4.36	0.75
ii. The ratio of computers available to students is appropriate.	4.32	0.80
iii. Support staff is knowledgeable and give suggestions appropriately.	4.31	0.73
iv. Educational materials and lab equipment available to students are adequate.	4.30	0.99
v. Support staff is friendly and committed to service.	4.28	0.78
vi. Information about service procedures is thoroughly provided for the students.	4.26	0.85
vii. Learning resources and online research databases available to students are adequate.	4.20	0.98
viii. Audio-visual equipment is adequately provided in classrooms.	4.20	0.81
ix. Information is announced to the students in a timely manner.	4.18	0.88
x. Course materials match the subject's content and are up-to-date.	4.15	0.74
xi. Labs and internship facilities suit the study program and subjects taught in the program.	4.14	1.05
xii. Textbooks, documents and other media in the library are up-to-date and adequate.	4.10	0.88
Average Score	4.23	0.85

Figure 10: Comparison of Mean Scores of Support Services by Program



A Report on Graduates Survey for the Academic Year 2023-2024.

Academic Strategy Unit, Strategy and Academic Development Group, the Office of Educational Affairs.

November 2024

❖ Course Management

Table 9: Mean and Percentage of the Graduates' Opinions on Course Management

8. Course Management	Opinion Level by Program 2023-2024																										
	Business Administration									Fine and Applied Arts						THM			SS			HLD					
	BE (N = 11)			MF (N = 27)			MI (N = 30)			MK (N = 25)			CD (N = 18)			MC (N = 30)			IH (N = 30)			IRGA (N = 55)			IC (N = 24)		
	M	SD	% of Satisfaction at level 4&5	M	SD	% of Satisfaction at level 4&5	M	SD	% of Satisfaction at level 4&5	M	SD	% of Satisfaction at level 4&5	M	SD	% of Satisfaction at level 4&5	M	SD	% of Satisfaction at level 4&5	M	SD	% of Satisfaction at level 4&5	M	SD	% of Satisfaction at level 4&5	M	SD	% of Satisfaction at level 4&5
8.1 Courses taught in the program help students to link theories with practice.	3.73	0.79	54.55%	4.37	0.74	85.19%	4.37	0.61	93.33%	4.16	0.80	76.00%	4.22	0.81	77.78%	3.93	0.87	66.67%	4.47	0.68	90.00%	4.31	0.88	83.64%	4.50	0.59	95.83%
8.2 Courses encourage students to develop skills that are necessary for future employment.	3.82	0.75	63.64%	4.26	0.81	85.19%	4.50	0.63	93.33%	4.24	0.78	80.00%	4.28	0.75	83.33%	3.77	0.90	66.67%	4.57	0.68	90.00%	4.38	0.80	87.27%	4.25	0.94	87.50%
8.3 Courses encourage students to think critically and to make decisions in a systematic manner.	3.64	0.81	45.45%	4.33	0.83	85.19%	4.50	0.63	93.33%	4.16	0.94	72.00%	4.39	0.61	94.44%	4.13	0.78	76.67%	4.53	0.68	90.00%	4.53	0.66	94.55%	4.71	0.55	95.83%
8.4 Courses encourage students to do research and to seek knowledge by themselves.	3.91	0.70	72.73%	4.22	0.97	77.78%	4.63	0.56	96.67%	4.24	0.93	84.00%	4.44	0.51	100.00%	4.20	0.71	83.33%	4.53	0.68	90.00%	4.62	0.59	94.55%	4.71	0.46	100.00%
8.5 Courses encourage students to engage in teamwork.	3.91	0.83	63.64%	4.26	1.16	81.48%	4.67	0.55	96.67%	4.28	0.89	80.00%	4.11	0.68	83.33%	4.10	0.76	76.67%	4.47	0.82	86.67%	4.55	0.66	90.91%	4.71	0.46	100.00%
8.6 Media and technologies are provided to support student's understanding of the course content.	3.91	0.83	63.64%	4.37	0.74	85.19%	4.63	0.56	96.67%	4.20	0.96	80.00%	4.11	0.96	72.22%	4.03	0.67	80.00%	4.57	0.73	86.67%	4.47	0.72	90.91%	4.79	0.41	100.00%
8.7 Various learning resources are made available to students.	3.82	0.75	63.64%	4.37	0.69	88.89%	4.53	0.68	90.00%	4.32	0.85	84.00%	4.11	0.90	77.78%	3.93	0.69	73.33%	4.50	0.68	90.00%	4.53	0.69	92.73%	4.63	0.49	100.00%
8.8 Courses encourage students to participate in various extra-curricular activities in order to develop themselves and society.	3.82	0.87	54.55%	4.26	0.86	88.89%	4.43	0.63	93.33%	4.16	0.85	80.00%	4.22	0.88	83.33%	4.10	0.96	76.67%	4.53	0.73	86.67%	4.36	0.75	83.64%	4.38	0.77	83.33%
8.9 Courses incorporate moral and professional ethics.	3.82	0.75	63.64%	4.30	0.95	81.48%	4.63	0.56	96.67%	4.16	0.85	80.00%	4.33	0.77	83.33%	4.13	0.68	83.33%	4.53	0.73	86.67%	4.55	0.66	90.91%	4.54	0.59	95.83%
Average Score	3.82	0.79	60.61%	4.30	0.86	84.36%	4.54	0.60	94.44%	4.21	0.87	79.56%	4.25	0.76	83.95%	4.04	0.78	75.93%	4.52	0.71	88.52%	4.48	0.71	89.90%	4.58	0.59	95.37%

Table 9: (-Continued)

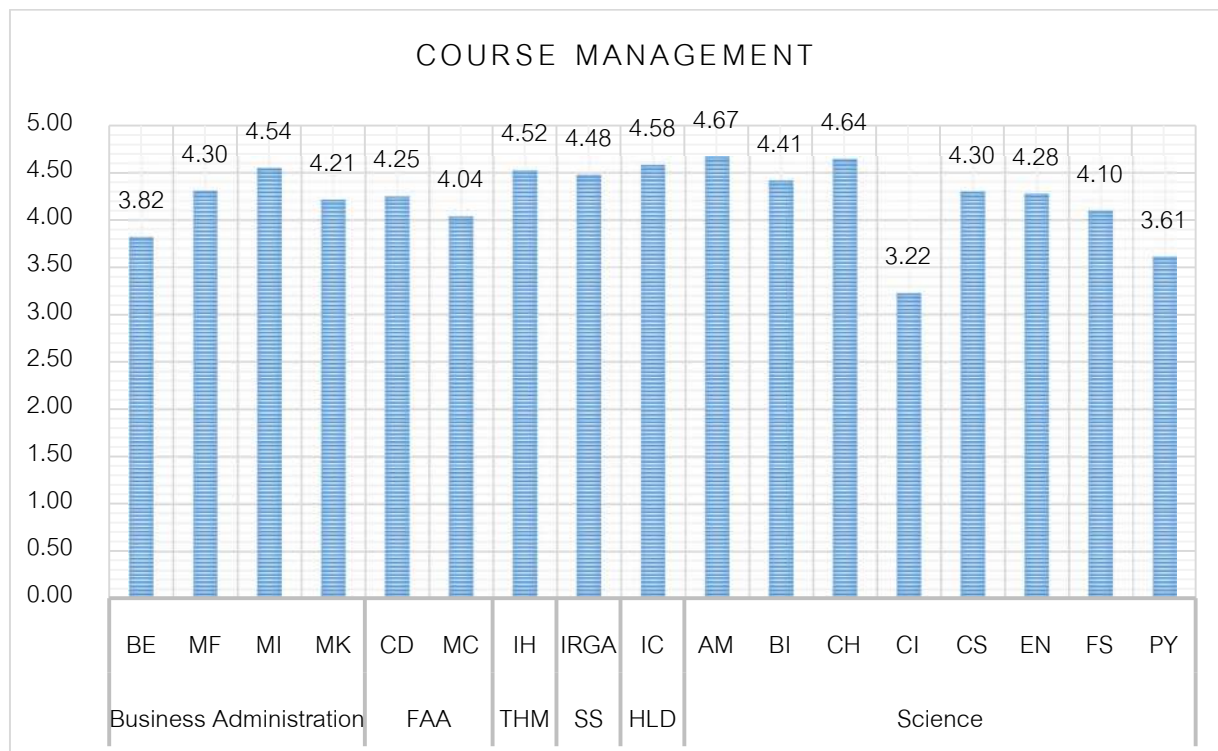
8. Course Management	Opinion Level by Program 2023-2024																										
	Science																							Overall MUIC			
	AM (N = 1)			BI (N = 34)			CH (N = 4)			CI (N = 1)			CS (N = 15)			EN (N = 2)			FS (N = 14)			PY (N = 2)			(N = 323)		
	M	SD	% of Satisfaction at level 4&5	M	SD	% of Satisfaction at level 4&5	M	SD	% of Satisfaction at level 4&5	M	SD	% of Satisfaction at level 4&5	M	SD	% of Satisfaction at level 4&5	M	SD	% of Satisfaction at level 4&5	M	SD	% of Satisfaction at level 4&5	M	SD	% of Satisfaction at level 4&5	M	SD	% of Satisfaction at level 4&5
8.1 Courses taught in the program help students to link theories with practice.	5.00	.	100.00%	4.44	0.75	85.29%	4.75	0.50	100.00%	3.00	.	0.00%	4.33	0.62	93.33%	4.50	0.71	100.00%	3.93	1.07	78.57%	3.50	0.71	50.00%	4.21	0.74	78.25%
8.2 Courses encourage students to develop skills that are necessary for future employment.	4.00	.	100.00%	4.29	0.97	85.29%	4.75	0.50	100.00%	3.00	.	0.00%	4.40	0.63	93.33%	4.00	1.41	50.00%	4.00	0.88	78.57%	2.50	2.12	50.00%	4.06	0.90	76.13%
8.3 Courses encourage students to think critically and to make decisions in a systematic manner.	5.00	.	100.00%	4.50	0.71	94.12%	4.75	0.50	100.00%	3.00	.	0.00%	4.53	0.64	93.33%	5.00	.	100.00%	3.93	0.92	71.43%	4.50	0.71	100.00%	4.36	0.71	82.73%
8.4 Courses encourage students to do research and to seek knowledge by themselves.	5.00	.	100.00%	4.50	0.66	91.18%	4.75	0.50	100.00%	3.00	.	0.00%	4.47	0.64	93.33%	4.50	0.71	100.00%	4.36	0.63	92.86%	5.00	.	100.00%	4.42	0.66	86.85%
8.5 Courses encourage students to engage in teamwork.	5.00	.	100.00%	4.29	0.80	85.29%	4.25	0.96	75.00%	3.00	.	0.00%	4.27	1.16	80.00%	3.50	0.71	50.00%	4.29	0.73	85.71%	4.00	1.41	50.00%	4.21	0.84	75.61%
8.6 Media and technologies are provided to support student's understanding of the course content.	4.00	.	100.00%	4.47	0.66	91.18%	4.75	0.50	100.00%	4.00	.	100.00%	4.40	0.74	86.67%	5.00	.	100.00%	4.14	0.95	78.57%	3.50	2.12	50.00%	4.31	0.82	85.98%
8.7 Various learning resources are made available to students.	5.00	.	100.00%	4.38	0.74	85.29%	4.50	1.00	75.00%	3.00	.	0.00%	4.27	0.96	80.00%	4.50	0.71	100.00%	4.14	0.95	78.57%	3.50	2.12	50.00%	4.24	0.86	78.19%
8.8 Courses encourage students to participate in various extra-curricular activities in order to develop themselves and society.	4.00	.	100.00%	4.32	0.88	85.29%	4.75	0.50	100.00%	4.00	.	100.00%	4.00	1.13	73.33%	4.00	1.41	50.00%	3.93	1.14	71.43%	3.00	2.83	50.00%	4.13	1.01	80.03%
8.9 Courses incorporate moral and professional ethics.	5.00	.	100.00%	4.50	0.79	88.24%	4.50	1.00	75.00%	3.00	.	0.00%	4.00	1.13	66.67%	3.50	0.71	50.00%	4.14	0.66	85.71%	3.00	2.83	50.00%	4.16	0.91	75.15%
Average Score	4.67	.	100.00%	4.41	0.77	87.91%	4.64	0.66	91.67%	3.22	.	22.22%	4.30	0.85	84.44%	4.28	0.91	77.78%	4.10	0.88	80.16%	3.61	1.86	61.11%	4.23	0.83	79.88%

## MUIC Average Rating Score for Course Management

[Ranked from highest to lowest]

8. Course Management	M	SD
i. Courses encourage students to do research and to seek knowledge by themselves.	4.42	0.66
ii. Courses encourage students to think critically and to make decisions in a systematic manner.	4.36	0.71
iii. Media and technologies are provided to support student's understanding of the course content.	4.31	0.82
iv. Various learning resources are made available to students.	4.24	0.86
v. Courses encourage students to engage in teamwork.	4.21	0.84
vi. Courses taught in the program help students to link theories with practice.	4.21	0.74
vii. Courses incorporate moral and professional ethics.	4.16	0.91
viii. Courses encourage students to participate in various extra-curricular activities in order to develop themselves and society.	4.13	1.01
ix. Courses encourage students to develop skills that are necessary for future employment.	4.06	0.90
Average Score	4.23	0.83

Figure 11: Comparison of Mean Scores of Course Management by Program



❖ Student Affairs & Student Development

Table 10: Mean and Percentage of the Graduates' Opinions on Student Affairs & Student Development

9. Student Affairs & Student Development	Opinion Level by Program 2023-2024																										
	Business Administration									Fine and Applied Arts						THM			SS			HLD					
	BE (N = 11)			MF (N = 27)			MI (N = 30)			MK (N = 25)			CD (N = 18)			MC (N = 30)			IH (N = 30)			IRGA (N = 55)			IC (N = 24)		
	M	SD	% of Satisfaction at level 4&5	M	SD	% of Satisfaction at level 4&5	M	SD	% of Satisfaction at level 4&5	M	SD	% of Satisfaction at level 4&5	M	SD	% of Satisfaction at level 4&5	M	SD	% of Satisfaction at level 4&5	M	SD	% of Satisfaction at level 4&5	M	SD	% of Satisfaction at level 4&5	M	SD	% of Satisfaction at level 4&5
9.1 Students are encouraged to participate in organizing extra-curricular activities.	3.73	0.79	54.55%	4.33	0.92	85.19%	4.13	1.01	76.67%	3.96	0.89	68.00%	4.00	0.97	66.67%	3.90	0.96	73.33%	4.53	0.73	86.67%	4.15	0.93	78.18%	4.67	0.56	95.83%
9.2 Various student development activities are made available.	3.73	0.79	54.55%	4.22	1.01	81.48%	4.33	0.84	83.33%	4.24	0.88	80.00%	4.06	0.94	72.22%	3.80	0.96	66.67%	4.47	0.73	86.67%	4.22	0.90	80.00%	4.58	0.65	91.67%
9.3 Resources and facilities for student activities are supported by the college.	3.73	0.90	45.45%	4.15	1.13	77.78%	4.47	0.68	90.00%	4.24	0.93	76.00%	3.78	1.06	61.11%	3.77	0.97	56.67%	4.47	0.73	86.67%	4.45	0.79	89.09%	4.58	0.58	95.83%
9.4 Student welfare is provided.	3.91	0.83	63.64%	4.19	1.00	74.07%	4.37	0.85	83.33%	4.20	0.96	72.00%	4.17	0.79	88.89%	3.77	1.04	63.33%	4.53	0.68	90.00%	4.15	0.95	78.18%	4.46	0.78	83.33%
9.5 Students are involved in the assessment of project/activity outcomes.	3.82	0.87	54.55%	4.15	1.13	77.78%	4.43	0.73	86.67%	4.28	0.84	84.00%	4.28	0.57	94.44%	3.93	0.78	66.67%	4.53	0.63	93.33%	4.29	0.92	81.82%	4.63	0.49	100.00%
Average Score	3.78	0.84	54.55%	4.21	1.04	79.26%	4.35	0.82	84.00%	4.18	0.90	76.00%	4.06	0.87	76.67%	3.83	0.94	65.33%	4.51	0.70	88.67%	4.25	0.90	81.45%	4.58	0.62	93.33%

Table 10: (-Continued)

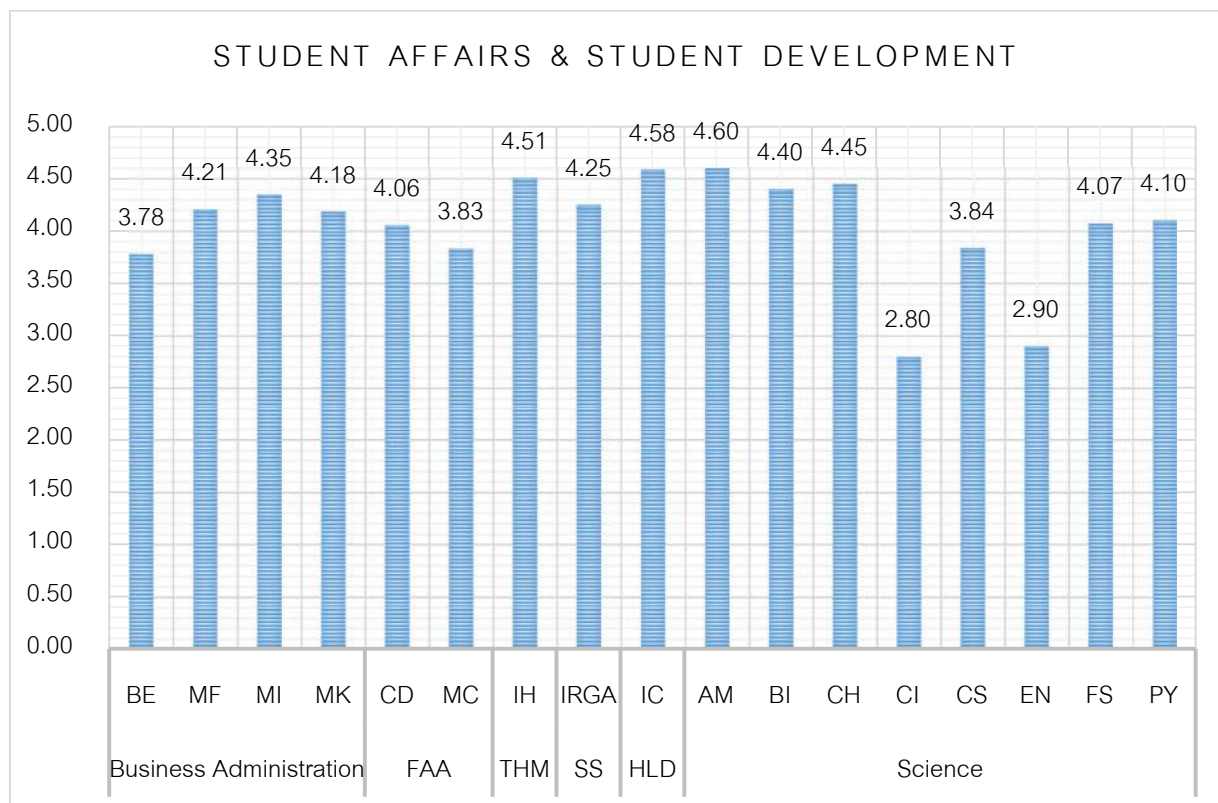
9. Student Affairs & Student Development	Opinion Level by Program 2023-2024																										
	Science																					Overall MUIC					
	AM (N = 1)			BI (N = 34)			CH (N =4)			CI (N = 1)			CS (N = 15)			EN (N = 2)			FS (N = 14)			PY (N = 2)			(N = 323)		
	M	SD	% of Satisfaction at level 4&5	M	SD	% of Satisfaction at level 4&5	M	SD	% of Satisfaction at level 4&5	M	SD	% of Satisfaction at level 4&5	M	SD	% of Satisfaction at level 4&5	M	SD	% of Satisfaction at level 4&5	M	SD	% of Satisfaction at level 4&5	M	SD	% of Satisfaction at level 4&5	M	SD	% of Satisfaction at level 4&5
9.1 Students are encouraged to participate in organizing extra-curricular activities.	5.00	.	100.00%	4.21	0.95	76.47%	4.25	0.96	75.00%	4.00	.	100.00%	3.73	1.10	66.67%	2.50	0.71	0.00%	4.14	0.77	78.57%	4.00	1.41	50.00%	4.07	0.91	72.46%
9.2 Various student development activities are made available.	4.00	.	100.00%	4.38	0.70	88.24%	4.75	0.50	100.00%	4.00	.	100.00%	4.00	0.93	73.33%	3.50	0.71	50.00%	4.29	0.61	92.86%	4.00	1.41	50.00%	4.15	0.84	79.47%
9.3 Resources and facilities for student activities are supported by the college.	5.00	.	100.00%	4.50	0.86	91.18%	4.50	0.58	100.00%	2.00	.	0.00%	3.67	1.18	60.00%	2.00	1.41	0.00%	3.93	1.00	78.57%	4.50	0.71	100.00%	3.98	0.90	71.08%
9.4 Student welfare is provided.	4.00	.	100.00%	4.50	0.66	91.18%	4.50	0.58	100.00%	2.00	.	0.00%	3.53	1.36	60.00%	3.50	2.12	50.00%	3.86	1.29	64.29%	4.50	0.71	100.00%	4.01	0.97	74.25%
9.5 Students are involved in the assessment of project/activity outcomes.	5.00	.	100.00%	4.41	0.66	91.18%	4.25	0.96	75.00%	2.00	.	0.00%	4.27	0.70	86.67%	3.00	2.83	50.00%	4.14	0.86	71.43%	3.50	0.71	50.00%	4.05	0.91	74.32%
Average Score	4.60	.	100.00%	4.40	0.76	87.65%	4.45	0.71	90.00%	2.80	.	40.00%	3.84	1.05	69.33%	2.90	1.56	30.00%	4.07	0.91	77.14%	4.10	0.99	70.00%	<u>4.05</u>	<u>0.91</u>	<u>74.32%</u>

MUIC Average Rating Score for Students Affairs & Student Development

[Ranked from highest to lowest]

9. Student Affairs & Student Development		M	SD
i.	Various student development activities are made available.	4.15	0.84
ii.	Students are encouraged to participate in organizing extra-curricular activities.	4.07	0.91
iii.	Students are involved in the assessment of project/activity outcomes.	4.05	0.91
iv.	Student welfare is provided.	4.01	0.97
v.	Resources and facilities for student activities are supported by the college.	3.98	0.90
Average Score		4.05	0.91

Figure 12: Comparison of Mean Scores of Student Affairs & Student Development by Program





❖ Course Measurement & Evaluations

Table 11: Mean and Percentage of the Graduates' Opinions on Course Measurement & Evaluations

10. Course Measurements & Evaluations	Opinion Level by Program 2023-2024																												
	Business Administration									Fine and Applied Arts						THM			SS			HLD							
	BE (N = 11)			MF (N = 27)			MI (N = 30)			MK (N = 25)			CD (N = 18)			MC (N = 30)			IH (N = 30)			IRGA (N = 55)			IC (N = 24)				
	M	SD	% of Satisfaction at level 4&5	M	SD	% of Satisfaction at level 4&5	M	SD	% of Satisfaction at level 4&5	M	SD	% of Satisfaction at level 4&5	M	SD	% of Satisfaction at level 4&5	M	SD	% of Satisfaction at level 4&5	M	SD	% of Satisfaction at level 4&5	M	SD	% of Satisfaction at level 4&5	M	SD	% of Satisfaction at level 4&5	M	SD
10.1 Students are clearly informed in advance about criteria and measurements used in course evaluations.	4.00	1.10	63.64%	4.37	0.74	85.19%	4.47	0.68	90.00%	4.16	0.99	80.00%	4.44	0.62	94.44%	4.17	0.79	76.67%	4.57	0.77	90.00%	4.45	0.74	89.09%	4.92	0.28	100.00%		
10.2 Measurement and course evaluations are consistent with the course's objectives.	3.91	0.94	54.55%	4.30	0.91	85.19%	4.43	0.68	90.00%	4.32	0.85	84.00%	4.61	0.50	100.00%	4.20	0.71	83.33%	4.53	0.78	90.00%	4.44	0.81	87.27%	4.83	0.38	100.00%		
10.3 Tools used in course measurement and evaluations are appropriate.	3.82	0.98	45.45%	4.19	0.92	81.48%	4.43	0.68	90.00%	4.24	0.88	80.00%	4.56	0.51	100.00%	3.97	0.72	73.33%	4.50	0.82	86.67%	4.55	0.69	92.73%	4.75	0.53	95.83%		
10.4 Measurement and evaluations are objective.	3.91	0.83	63.64%	4.33	0.78	88.89%	4.50	0.63	93.33%	4.24	0.93	84.00%	4.44	0.62	94.44%	4.03	0.76	73.33%	4.47	0.78	90.00%	4.40	0.78	85.45%	4.79	0.41	100.00%		
10.5 Evaluation results are communicated to the students in a timely manner.	4.27	0.90	72.73%	4.26	0.90	85.19%	4.53	0.57	96.67%	4.32	0.75	84.00%	4.39	0.50	100.00%	4.07	0.74	76.67%	4.50	0.78	90.00%	4.36	0.87	87.27%	4.83	0.48	95.83%		
Average Score	3.98	0.95	60.00%	4.29	0.85	85.19%	4.47	0.65	92.00%	4.26	0.88	82.40%	4.49	0.55	97.78%	4.09	0.75	76.67%	4.51	0.78	89.33%	4.44	0.78	88.36%	4.83	0.42	98.33%		

Table 11: (-Continued-)

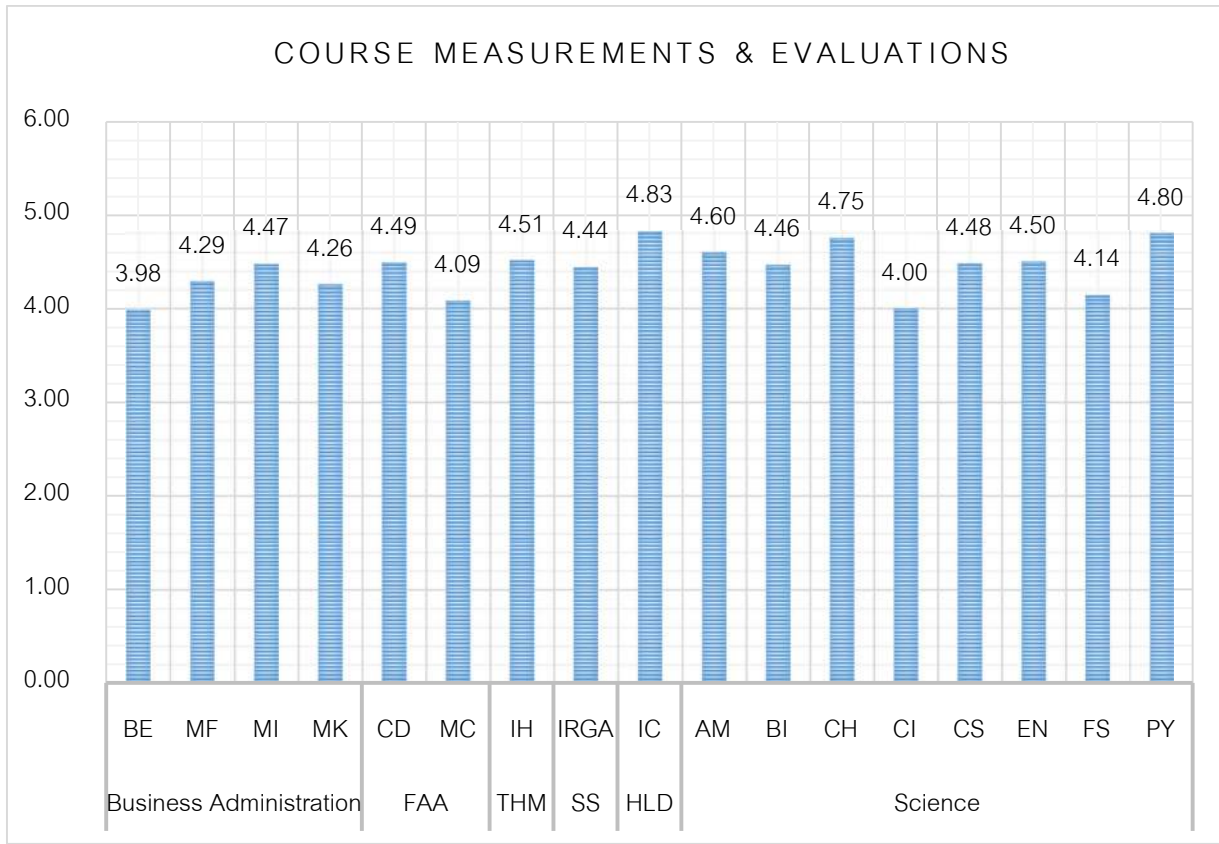
10. Course Measurements & Evaluations	Opinion Level by Program 2023-2024																												
	Science																						Overall MUIC						
	AM (N = 1)			BI (N = 34)			CH (N =4)			CI (N = 1)			CS (N = 15)			EN (N = 2)			FS (N = 14)			PY (N = 2)			(N = 323)				
	M	SD	% of Satisfaction at level 4&5	M	SD	% of Satisfaction at level 4&5	M	SD	% of Satisfaction at level 4&5	M	SD	% of Satisfaction at level 4&5	M	SD	% of Satisfaction at level 4&5	M	SD	% of Satisfaction at level 4&5	M	SD	% of Satisfaction at level 4&5	M	SD	% of Satisfaction at level 4&5	M	SD	% of Satisfaction at level 4&5	M	SD
10.1 Students are clearly informed in advance about criteria and measurements used in course evaluations.	5.00	.	100.00%	4.53	0.61	94.12%	4.75	0.50	100.00%	4.00	.	100.00%	4.60	0.63	93.33%	4.00	1.41	50.00%	4.36	0.74	85.71%	5.00	.	100.00%	4.46	0.76	87.78%		
10.2 Measurement and course evaluations are consistent with the course's objectives.	4.00	.	100.00%	4.53	0.61	94.12%	4.75	0.50	100.00%	4.00	.	100.00%	4.47	0.64	93.33%	4.00	.	100.00%	4.29	1.14	85.71%	5.00	.	100.00%	4.39	0.73	91.03%		
10.3 Tools used in course measurement and evaluations are appropriate.	5.00	.	100.00%	4.50	0.62	94.12%	4.75	0.50	100.00%	4.00	.	100.00%	4.40	0.74	86.67%	5.00	.	100.00%	4.00	1.30	71.43%	5.00	.	100.00%	4.45	0.76	88.10%		
10.4 Measurement and evaluations are objective.	4.00	.	100.00%	4.44	0.66	91.18%	4.75	0.50	100.00%	4.00	.	100.00%	4.47	0.64	93.33%	5.00	.	100.00%	4.07	1.14	78.57%	4.50	0.71	100.00%	4.37	0.73	90.36%		
10.5 Evaluation results are communicated to the students in a timely manner.	5.00	.	100.00%	4.32	0.77	88.24%	4.75	0.50	100.00%	4.00	.	100.00%	4.47	0.64	93.33%	4.50	0.71	100.00%	4.00	1.11	78.57%	4.50	0.71	100.00%	4.42	0.73	91.09%		
Average Score	4.60	.	100.00%	4.46	0.65	92.35%	4.75	0.50	100.00%	4.00	.	100.00%	4.48	0.66	92.00%	4.50	1.06	90.00%	4.14	1.09	80.00%	4.80	0.71	100.00%	4.42	0.74	89.67%		

### MUIC Average Rating Score for Course Measurement & Evaluations

[Ranked from highest to lowest]

10. Course Measurements & Evaluations		M	SD
i.	Students are clearly informed in advance about criteria and measurements used in course evaluations.	4.46	0.76
ii.	Tools used in course measurement and evaluations are appropriate.	4.45	0.76
iii.	Evaluation results are communicated to the students in a timely manner.	4.42	0.73
iv.	Measurement and course evaluations are consistent with the course's objectives.	4.39	0.73
v.	Measurement and evaluations are objective.	4.37	0.73
Average Score		4.42	0.74

Figure 13: Comparison of Mean Scores of Course Measurement & Evaluations by Program



A Report on Graduates Survey for the Academic Year 2023-2024.

Academic Strategy Unit, Strategy and Academic Development Group, the Office of Educational Affairs.

November 2024

❖ Program Achievement

Table 12: Mean and Percentage of the Graduates' Opinions on Program Achievement

11. Program Achievement	Opinion Level by Program 2023-2024																												
	Business Administration												Fine and Applied Arts						THM			SS			HLD				
	BE (N = 11)			MF (N = 27)			MI (N = 30)			MK (N = 25)			CD (N = 18)			MC (N = 30)			IH (N = 30)			IRGA (N = 55)			IC (N = 24)				
	M	SD	% of Satisfaction at level 4&5	M	SD	% of Satisfaction at level 4&5	M	SD	% of Satisfaction at level 4&5	M	SD	% of Satisfaction at level 4&5	M	SD	% of Satisfaction at level 4&5	M	SD	% of Satisfaction at level 4&5	M	SD	% of Satisfaction at level 4&5	M	SD	% of Satisfaction at level 4&5	M	SD	% of Satisfaction at level 4&5	M	SD
11.1 Graduates have enough basic knowledge for further studies.	3.73	0.79	54.55%	4.33	0.88	81.48%	4.53	0.63	93.33%	4.20	0.87	80.00%	4.28	0.57	94.44%	4.03	0.81	76.67%	4.57	0.68	90.00%	4.44	0.76	87.27%	4.25	0.74	83.33%		
11.2 Graduates have adequate knowledge and skills to work in their professions.	3.64	0.67	54.55%	4.15	0.95	77.78%	4.53	0.63	93.33%	4.12	0.88	76.00%	4.28	0.57	94.44%	3.90	0.80	70.00%	4.50	0.73	86.67%	4.38	0.76	87.27%	4.21	1.02	79.17%		
11.3 Graduates have a sense of social responsibility.	3.73	0.79	54.55%	4.33	1.07	81.48%	4.70	0.60	93.33%	4.16	0.90	76.00%	4.33	0.69	88.89%	4.23	0.77	80.00%	4.67	0.61	93.33%	4.62	0.65	90.91%	4.75	0.44	100.00%		
11.4 Graduates have morals and professional ethics as well as enthusiasm for self-development.	3.82	0.75	63.64%	4.37	1.04	85.19%	4.73	0.52	96.67%	4.28	0.84	84.00%	4.33	0.59	94.44%	4.20	0.71	83.33%	4.73	0.58	93.33%	4.58	0.69	92.73%	4.83	0.38	100.00%		
Average Score	3.73	0.75	56.82%	4.30	0.99	81.48%	4.63	0.59	94.17%	4.19	0.87	79.00%	4.31	0.61	93.06%	4.09	0.77	77.50%	4.62	0.65	90.83%	4.50	0.71	89.55%	4.51	0.65	90.63%		

Table 12: (-Continued-)

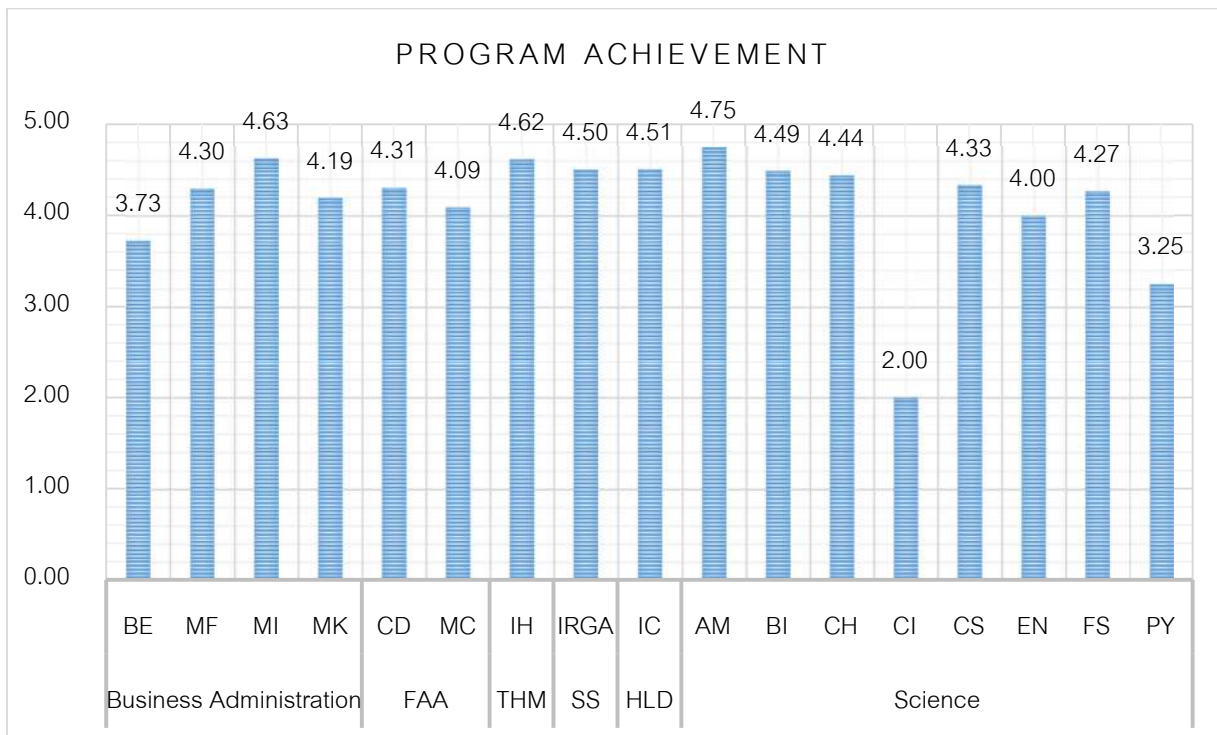
11. Program Achievement	Opinion Level by Program 2023-2024																										
	Science																					Overall MUIC					
	AM (N = 1)			BI (N = 34)			CH (N = 4)			CI (N = 1)			CS (N = 15)			EN (N = 2)			FS (N = 14)			PY (N = 2)			(N = 323)		
	M	SD	% of Satisfaction at level 4&5	M	SD	% of Satisfaction at level 4&5	M	SD	% of Satisfaction at level 4&5	M	SD	% of Satisfaction at level 4&5	M	SD	% of Satisfaction at level 4&5	M	SD	% of Satisfaction at level 4&5	M	SD	% of Satisfaction at level 4&5	M	SD	% of Satisfaction at level 4&5	M	SD	% of Satisfaction at level 4&5
11.1 Graduates have enough basic knowledge for further studies.	5.00	.	100.00%	4.56	0.66	91.18%	4.50	0.58	100.00%	2.00	.	0.00%	4.40	0.74	86.67%	3.00	2.83	50.00%	4.29	0.73	85.71%	3.00	1.41	50.00%	4.06	0.91	76.74%
11.2 Graduates have adequate knowledge and skills to work in their professions.	4.00	.	100.00%	4.26	0.79	85.29%	4.00	1.41	75.00%	2.00	.	0.00%	4.47	0.64	93.33%	4.00	1.41	50.00%	4.14	0.66	85.71%	3.00	1.41	50.00%	3.98	0.89	74.03%
11.3 Graduates have a sense of social responsibility.	5.00	.	100.00%	4.47	0.61	94.12%	4.50	0.58	100.00%	2.00	.	0.00%	4.20	0.94	80.00%	4.50	0.71	100.00%	4.36	0.74	85.71%	3.50	2.12	50.00%	4.24	0.81	80.49%
11.4 Graduates have morals and professional ethics as well as enthusiasm for self-development.	5.00	.	100.00%	4.65	0.54	97.06%	4.75	0.50	100.00%	2.00	.	0.00%	4.27	0.80	80.00%	4.50	0.71	100.00%	4.29	0.73	85.71%	3.50	2.12	50.00%	4.28	0.77	82.71%
Average Score	4.75	.	100.00%	4.49	0.65	91.91%	4.44	0.77	93.75%	2.00	.	0.00%	4.33	0.78	85.00%	4.00	1.41	75.00%	4.27	0.72	85.71%	3.25	1.77	50.00%	4.14	0.85	78.49%

### MUIC Average Rating Score for Program Achievement

[Ranked from highest to lowest]

11. Program Achievement	M	SD
i. Graduates have morals and professional ethics as well as enthusiasm for self-development.	4.28	0.77
ii. Graduates have a sense of social responsibility.	4.24	0.81
iii. Graduates have enough basic knowledge for further studies.	4.06	0.91
iv. Graduates have adequate knowledge and skills to work in their professions.	3.98	0.89
<b>Average Score</b>	<b>4.14</b>	<b>0.85</b>

Figure 14: Comparison of Mean Scores of Program Achievement by Program



❖ Program's Quality Assurance

Table 13: Mean and Percentage of the Graduates' Opinions on Program's Quality Assurance

12. Program's Quality Assurance	Opinion Level by Program 2023-2024																										
	Business Administration									Fine and Applied Arts						THM			SS			HLD					
	BE (N = 11)			MF (N = 27)			MI (N = 30)			MK (N = 25)			CD (N = 18)			MC (N = 30)			IH (N = 30)			IRGA (N = 55)			IC (N = 24)		
	M	SD	% of Satisfaction at level 4&5	M	SD	% of Satisfaction at level 4&5	M	SD	% of Satisfaction at level 4&5	M	SD	% of Satisfaction at level 4&5	M	SD	% of Satisfaction at level 4&5	M	SD	% of Satisfaction at level 4&5	M	SD	% of Satisfaction at level 4&5	M	SD	% of Satisfaction at level 4&5	M	SD	% of Satisfaction at level 4&5
12.1 There is an evaluation of the course's lecturer.	3.91	0.94	54.55%	4.52	0.85	85.19%	4.67	0.61	93.33%	4.40	0.82	88.00%	4.33	0.77	83.33%	4.17	0.87	76.67%	4.63	0.61	93.33%	4.55	0.77	90.91%	4.92	0.28	100.00%
12.2 There is an appropriate process to support, give advice and assist students.	3.91	0.83	63.64%	4.11	1.19	77.78%	4.43	0.68	90.00%	4.24	0.83	84.00%	4.28	0.75	83.33%	4.00	0.95	70.00%	4.53	0.63	93.33%	4.36	0.73	92.73%	4.88	0.34	100.00%
12.3 The program collaborates with organizations and experts outside the college.	3.82	0.87	54.55%	4.33	0.92	85.19%	4.17	1.05	76.67%	4.24	0.88	80.00%	4.17	0.86	72.22%	3.80	1.10	70.00%	4.50	0.63	93.33%	4.49	0.74	89.09%	4.71	0.69	95.83%
12.4 Students enjoy collaborative networks with alumni.	3.45	0.69	36.36%	4.15	1.17	77.78%	4.27	1.05	80.00%	4.08	0.86	76.00%	3.89	1.18	66.67%	3.90	0.92	66.67%	4.43	0.82	86.67%	4.07	0.94	70.91%	4.13	1.08	70.83%
Average Score	3.77	0.83	52.27%	4.28	1.03	81.48%	4.38	0.85	85.00%	4.24	0.85	82.00%	4.17	0.89	76.39%	3.97	0.96	70.83%	4.53	0.67	91.67%	4.37	0.79	85.91%	4.66	0.60	91.67%

Table 13: (-Continued-)

12. Program's Quality Assurance	Opinion Level by Program 2023-2024																												
	Science																					Overall MUIC							
	AM (N = 1)			BI (N = 34)			CH (N = 4)			CI (N = 1)			CS (N = 15)			EN (N = 2)			FS (N = 14)			PY (N = 2)			(N = 323)				
	M	SD	% of Satisfaction at level 4&5	M	SD	% of Satisfaction at level 4&5	M	SD	% of Satisfaction at level 4&5	M	SD	% of Satisfaction at level 4&5	M	SD	% of Satisfaction at level 4&5	M	SD	% of Satisfaction at level 4&5	M	SD	% of Satisfaction at level 4&5	M	SD	% of Satisfaction at level 4&5	M	SD	% of Satisfaction at level 4&5	M	SD
12.1 There is an evaluation of the course's lecturer.	5.00	.	100.00%	4.62	0.60	94.12%	4.75	0.50	100.00%	5.00	.	100.00%	4.60	0.63	93.33%	4.50	0.71	100.00%	4.57	0.65	92.86%	5.00	.	100.00%	4.60	0.69	90.92%		
12.2 There is an appropriate process to support, give advice and assist students.	4.00	.	100.00%	4.44	0.86	91.18%	4.75	0.50	100.00%	4.00	.	100.00%	4.40	0.63	93.33%	3.00	2.83	50.00%	4.36	0.93	85.71%	5.00	.	100.00%	4.28	0.91	86.77%		
12.3 The program collaborates with organizations and experts outside the college.	5.00	.	100.00%	4.41	0.89	88.24%	4.75	0.50	100.00%	4.00	.	100.00%	4.20	0.77	80.00%	3.00	2.83	50.00%	4.00	0.96	71.43%	4.00	1.41	50.00%	4.21	1.01	79.80%		
12.4 Students enjoy collaborative networks with alumni.	5.00	.	100.00%	4.09	1.03	79.41%	4.75	0.50	100.00%	3.00	.	0.00%	3.53	1.25	53.33%	3.00	1.41	50.00%	4.00	0.96	71.43%	3.00	1.41	50.00%	3.93	1.02	66.83%		
Average Score	4.75	.	100.00%	4.39	0.85	88.24%	4.75	0.50	100.00%	4.00	.	75.00%	4.18	0.82	80.00%	3.38	1.94	62.50%	4.23	0.87	80.36%	4.25	1.41	75.00%	4.25	0.90	81.08%		

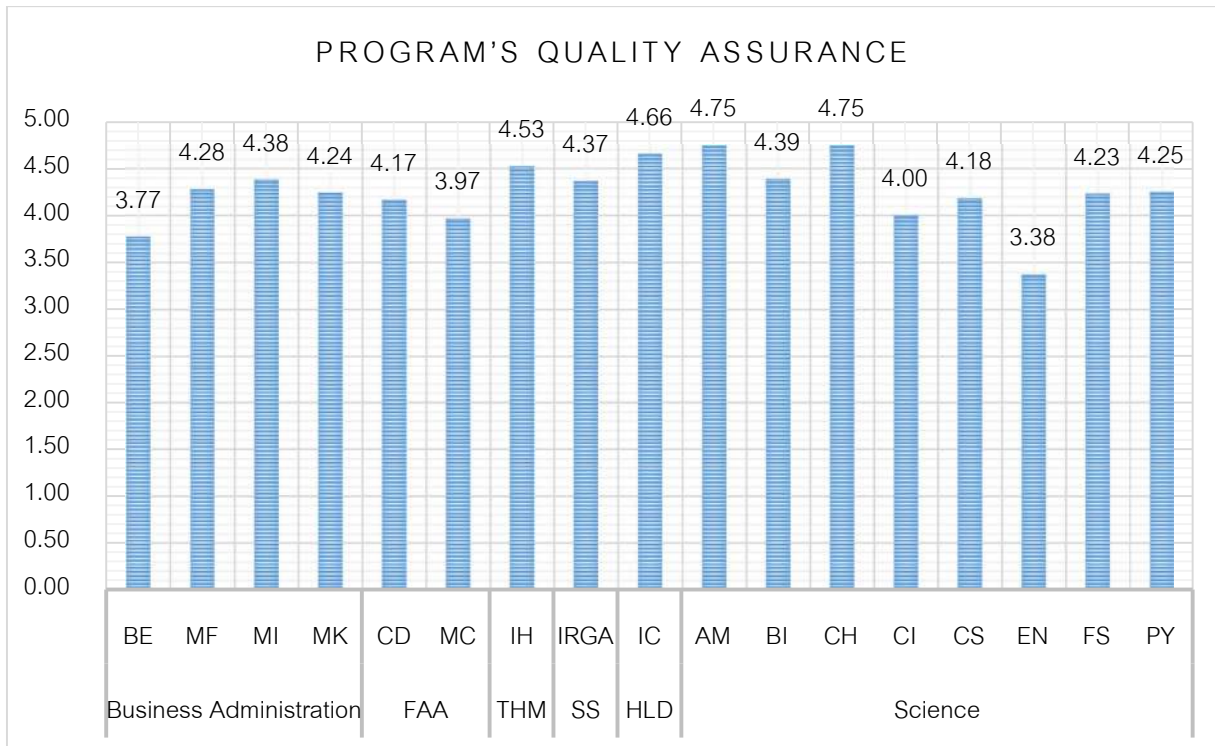


### MUIC Average Rating Score for Program's Quality Assurance

[Ranked from highest to lowest]

12. Program's Quality Assurance	M	SD
i. There is an evaluation of the course's lecturer.	4.60	0.69
ii. There is an appropriate process to support, give advice and assist students.	4.28	0.91
iii. The program collaborates with organizations and experts outside the college.	4.21	1.01
iv. Students enjoy collaborative networks with alumni.	3.93	1.02
Average Score	<u>4.25</u>	<u>0.90</u>

Figure 15: Comparison of Mean Scores of Program's Quality Assurance by Program



❖ Multi-Cultural Experience

Table 14: Mean and Percentage of the Graduates' Opinions on Multi-Cultural Experience

13. Multi-cultural experiences	Opinion Level by Program 2023-2024																										
	Business Administration									Fine and Applied Arts						THM			SS			HLD					
	BE (N = 11)			MF (N = 27)			MI (N = 30)			MK (N = 25)			CD (N = 18)			MC (N = 30)			IH (N = 30)			IRGA (N = 55)			IC (N = 24)		
	M	SD	% of Satisfaction at level 4&5	M	SD	% of Satisfaction at level 4&5	M	SD	% of Satisfaction at level 4&5	M	SD	% of Satisfaction at level 4&5	M	SD	% of Satisfaction at level 4&5	M	SD	% of Satisfaction at level 4&5	M	SD	% of Satisfaction at level 4&5	M	SD	% of Satisfaction at level 4&5	M	SD	% of Satisfaction at level 4&5
13.1 International experience/exposure at MUIC	3.73	0.65	63.64%	4.59	0.75	92.59%	4.70	0.60	93.33%	4.36	0.70	88.00%	4.39	0.61	94.44%	3.83	1.15	73.33%	4.47	0.86	83.33%	4.44	0.76	83.64%	4.71	0.62	91.67%
13.2 Student exchange programs	3.45	0.69	36.36%	4.44	1.01	88.89%	4.67	0.66	90.00%	4.20	0.87	80.00%	4.00	1.28	72.22%	3.87	1.17	73.33%	4.30	0.75	83.33%	4.36	0.78	81.82%	4.50	0.93	91.67%
Average Score	3.59	0.67	50.00%	4.52	0.88	90.74%	4.68	0.63	91.67%	4.28	0.78	84.00%	4.19	0.95	83.33%	3.85	1.16	73.33%	4.38	0.81	83.33%	4.40	0.77	82.73%	4.60	0.78	91.67%

Table 14: (-Continued-)

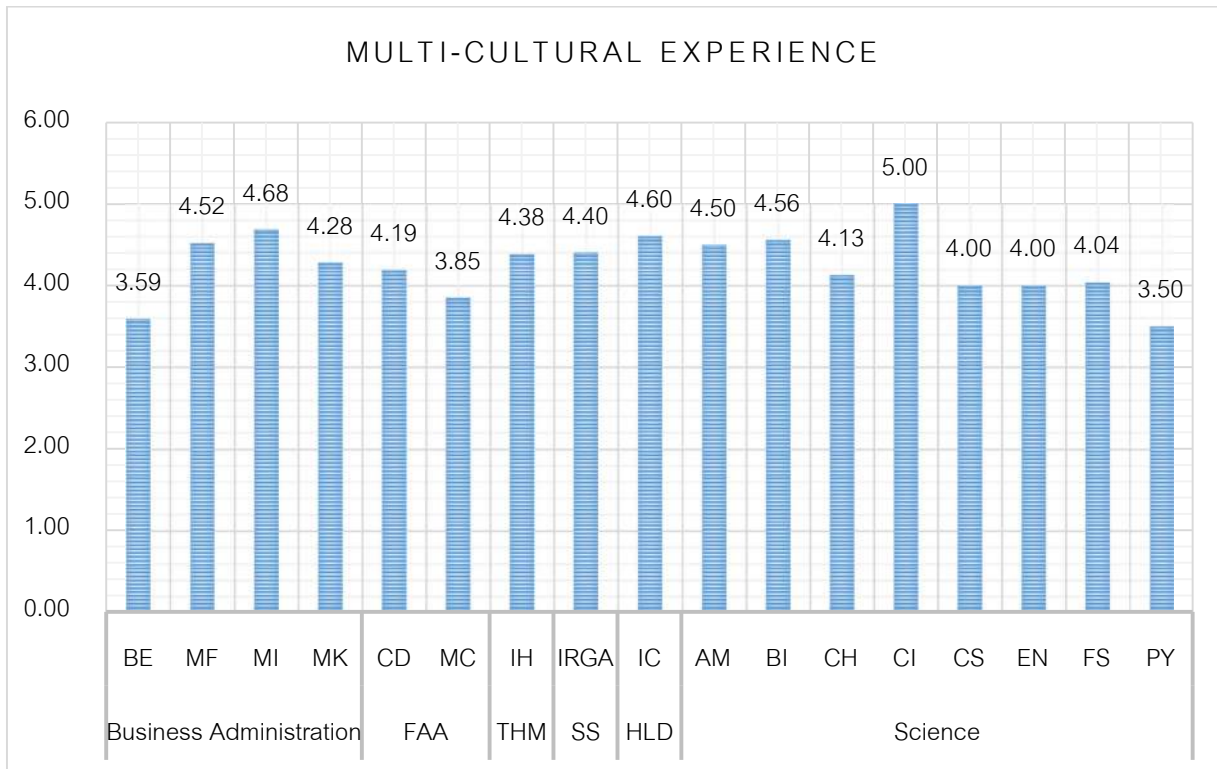
13. Multi-cultural experiences	Opinion Level by Program 2023-2024																										
	Science																						Overall MUIC				
	AM (N = 1)			BI (N = 34)			CH (N = 4)			CI (N = 1)			CS (N = 15)			EN (N = 2)			FS (N = 14)			PY (N = 2)			(N = 323)		
	M	SD	% of Satisfaction at level 4&5	M	SD	% of Satisfaction at level 4&5	M	SD	% of Satisfaction at level 4&5	M	SD	% of Satisfaction at level 4&5	M	SD	% of Satisfaction at level 4&5	M	SD	% of Satisfaction at level 4&5	M	SD	% of Satisfaction at level 4&5	M	SD	% of Satisfaction at level 4&5	M	SD	% of Satisfaction at level 4&5
13.1 International experience/exposure at MUIC	5.00	.	100.00%	4.62	0.65	91.18%	4.00	1.15	50.00%	5.00	.	100.00%	4.13	0.74	80.00%	4.00	1.41	50.00%	4.00	1.24	78.57%	4.50	0.71	100.00%	4.38	0.84	83.16%
13.2 Student exchange programs	4.00	.	100.00%	4.50	0.83	85.29%	4.25	0.96	75.00%	5.00	.	100.00%	3.87	1.19	73.33%	4.00	1.41	50.00%	4.07	0.83	71.43%	2.50	2.12	50.00%	4.12	1.03	76.63%
Average Score	4.50	.	100.00%	4.56	0.74	88.24%	4.13	1.06	62.50%	5.00	.	100.00%	4.00	0.97	76.67%	4.00	1.41	50.00%	4.04	1.03	75.00%	3.50	1.41	75.00%	<u>4.25</u>	<u>0.94</u>	<u>79.89%</u>

MUIC Average Rating Score for Multi-Cultural Experience

[Ranked from highest to lowest]

13. Multi-cultural experiences	M	SD
i. International experience/exposure at MUIC	4.38	0.84
ii. Student exchange programs	4.12	1.03
Average Score	4.25	0.94

Figure 16: Comparison of Mean Scores of Multi-Cultural Experience by Program



### Part III: MUIC Experience Impacting Graduates' Development

---

In this part, the graduates' opinions on MUIC experience impacting their development that were measured by using scale of 1-5:

5 = Very high impact

4 = High impact

3 = Moderate impact

2 = Low impact

1 = Very low impact



MUIC Experience Impacting Graduates' Development on Skills:

Table 15: Mean and Percentage of the Graduates' Opinions on MUIC Experience Impacting Graduates' Development on Skills

MUIC Experience Impacting Graduates' Development on Skills	Opinion Level by Program 2023-2024																										
	Business Administration									Fine and Applied Arts						THM			SS			HLD					
	BE (N = 11)			MF (N = 27)			MI (N = 30)			MK (N = 25)			CD (N = 18)			MC (N = 30)			IH (N = 30)			IRGA (N = 55)			IC (N = 24)		
	M	SD	% of Satisfaction at level 4&5	M	SD	% of Satisfaction at level 4&5	M	SD	% of Satisfaction at level 4&5	M	SD	% of Satisfaction at level 4&5	M	SD	% of Satisfaction at level 4&5	M	SD	% of Satisfaction at level 4&5	M	SD	% of Satisfaction at level 4&5	M	SD	% of Satisfaction at level 4&5	M	SD	% of Satisfaction at level 4&5
1. Writing effectively	3.91	0.70	72.73%	4.59	0.64	92.59%	4.67	0.55	96.67%	4.48	0.77	92.00%	4.06	0.64	83.33%	4.27	0.64	90.00%	4.57	0.68	90.00%	4.64	0.62	92.73%	4.58	0.58	95.83%
2. Speaking effectively	4.00	0.63	81.82%	4.33	0.68	88.89%	4.67	0.55	96.67%	4.32	0.80	88.00%	4.11	0.83	83.33%	4.23	0.68	86.67%	4.47	0.73	86.67%	4.40	0.71	87.27%	4.71	0.46	100.00%
3. Critically analyzing written information	4.09	0.70	81.82%	4.37	0.74	85.19%	4.67	0.55	96.67%	4.36	0.81	88.00%	4.17	0.79	88.89%	4.27	0.74	83.33%	4.50	0.78	90.00%	4.58	0.57	96.36%	4.67	0.48	100.00%
4. Working and/or learning independently	4.18	0.75	81.82%	4.67	0.55	96.30%	4.80	0.41	100.00%	4.48	0.77	92.00%	4.61	0.61	94.44%	4.30	0.75	83.33%	4.63	0.61	93.33%	4.67	0.55	96.36%	4.88	0.34	100.00%
5. Using a foreign language	3.91	0.83	63.64%	4.52	0.80	81.48%	4.63	0.61	93.33%	4.32	1.03	88.00%	4.28	0.75	83.33%	4.23	0.82	83.33%	4.40	0.81	80.00%	4.67	0.58	94.55%	4.79	0.59	91.67%
6. Understanding and appreciating the arts	4.09	0.83	72.73%	4.11	1.05	74.07%	4.40	0.72	86.67%	4.08	1.08	72.00%	4.67	0.49	100.00%	4.30	0.84	76.67%	4.53	0.68	90.00%	4.47	0.69	89.09%	4.67	0.56	95.83%
7. Understanding and applying scientific principles and methods	4.00	0.63	81.82%	4.11	1.12	77.78%	4.43	0.73	86.67%	4.12	1.01	72.00%	4.00	0.91	72.22%	3.97	0.96	70.00%	4.40	0.81	80.00%	4.38	0.73	89.09%	4.25	0.85	83.33%
8. Understanding and applying quantitative principles and methods	3.91	0.70	72.73%	4.41	0.80	88.89%	4.63	0.49	100.00%	4.16	0.90	76.00%	4.22	0.65	88.89%	4.00	0.74	73.33%	4.57	0.63	93.33%	4.47	0.72	90.91%	4.54	0.72	87.50%
9. Understanding and appreciating diverse philosophies and cultures	3.91	0.83	63.64%	4.37	0.79	81.48%	4.67	0.48	100.00%	4.20	1.04	80.00%	4.22	0.65	88.89%	4.17	0.79	76.67%	4.60	0.67	90.00%	4.64	0.59	94.55%	4.88	0.34	100.00%
Average Score	4.00	0.73	74.75%	4.39	0.80	85.19%	4.62	0.56	95.19%	4.28	0.91	83.11%	4.26	0.70	87.04%	4.19	0.77	80.37%	4.52	0.71	88.15%	4.55	0.64	92.32%	4.66	0.55	94.91%

A Report on Graduates Survey for the Academic Year 2023-2024.

Academic Strategy Unit, Strategy and Academic Development Group, the Office of Educational Affairs.

November 2024

Table 15: (-Continued-)

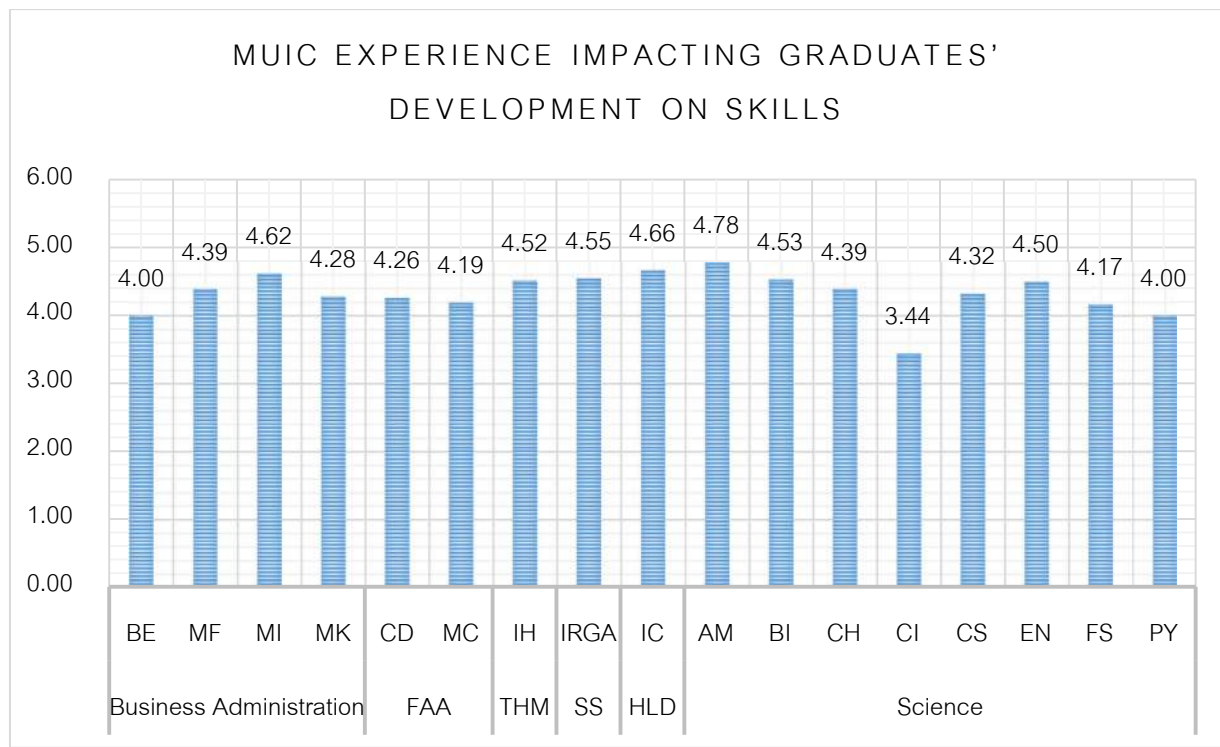
MUIC Experience Impacting Graduates' Development on Skills	Opinion Level by Program 2023-2024																												
	Science																					Overall MUIC							
	AM (N = 1)			BI (N = 34)			CH (N = 4)			CI (N = 1)			CS (N = 15)			EN (N = 2)			FS (N = 14)			PY (N = 2)			(N = 323)				
	M	SD	% of Satisfaction at level 4&5	M	SD	% of Satisfaction at level 4&5	M	SD	% of Satisfaction at level 4&5	M	SD	% of Satisfaction at level 4&5	M	SD	% of Satisfaction at level 4&5	M	SD	% of Satisfaction at level 4&5	M	SD	% of Satisfaction at level 4&5	M	SD	% of Satisfaction at level 4&5	M	SD	% of Satisfaction at level 4&5	M	SD
1. Writing effectively	5.00	.	100.00%	4.59	0.56	97.06%	4.00	0.82	75.00%	4.00	.	100.00%	4.33	0.90	86.67%	4.50	0.71	100.00%	4.29	0.91	85.71%	4.00	.	100.00%	4.38	0.69	91.20%		
2. Speaking effectively	5.00	.	100.00%	4.50	0.75	91.18%	4.25	0.96	75.00%	4.00	.	100.00%	4.20	1.08	80.00%	4.00	1.41	50.00%	4.21	0.70	85.71%	3.50	0.71	50.00%	4.29	0.78	84.19%		
3. Critically analyzing written information	4.00	.	100.00%	4.56	0.61	94.12%	4.50	1.00	75.00%	4.00	.	100.00%	4.40	0.91	86.67%	5.00	.	100.00%	3.93	0.83	64.29%	4.00	.	100.00%	4.36	0.73	90.02%		
4. Working and/or learning independently	5.00	.	100.00%	4.62	0.60	94.12%	4.75	0.50	100.00%	4.00	.	100.00%	4.47	0.74	86.67%	4.00	1.41	50.00%	4.36	0.93	85.71%	4.50	0.71	100.00%	4.52	0.68	91.42%		
5. Using a foreign language	5.00	.	100.00%	4.44	0.96	85.29%	4.00	1.41	75.00%	3.00	.	0.00%	4.13	1.13	73.33%	4.00	.	100.00%	3.79	0.89	64.29%	4.00	.	100.00%	4.24	0.86	79.84%		
6. Understanding and appreciating the arts	4.00	.	100.00%	4.41	0.89	88.24%	4.50	1.00	75.00%	3.00	.	0.00%	3.93	0.96	66.67%	5.00	.	100.00%	4.07	0.83	71.43%	4.00	.	100.00%	4.25	0.82	79.91%		
7. Understanding and applying scientific principles and methods	5.00	.	100.00%	4.62	0.49	100.00%	4.75	0.50	100.00%	3.00	.	0.00%	4.47	0.64	93.33%	4.50	0.71	100.00%	4.29	0.91	85.71%	4.00	.	100.00%	4.25	0.79	81.88%		
8. Understanding and applying quantitative principles and methods	5.00	.	100.00%	4.53	0.61	94.12%	4.75	0.50	100.00%	3.00	.	0.00%	4.53	0.64	93.33%	5.00	.	100.00%	4.29	0.91	85.71%	4.00	.	100.00%	4.35	0.69	84.99%		
9. Understanding and appreciating diverse philosophies and cultures	5.00	.	100.00%	4.53	0.75	91.18%	4.00	1.15	50.00%	3.00	.	0.00%	4.40	0.74	86.67%	4.50	0.71	100.00%	4.29	0.61	92.86%	4.00	.	100.00%	4.32	0.72	82.11%		
Average Score	4.78	.	100.00%	4.53	0.69	92.81%	4.39	0.87	80.56%	3.44	.	44.44%	4.32	0.86	83.70%	4.50	0.99	88.89%	4.17	0.84	80.16%	4.00	0.71	94.44%	4.33	0.75	85.06%		

MUIC Average Rating Score for MUIC Experience Impacting Graduates' Development on Skills

[Ranked from highest to lowest]

MUIC Experience Impacting Graduates' Development on Skills	M	SD
i. Working and/or learning independently	4.52	0.68
ii. Writing effectively	4.38	0.69
iii. Critically analyzing written information	4.36	0.73
iv. Understanding and applying quantitative principles and methods	4.35	0.69
v. Understanding and appreciating diverse philosophies and cultures	4.32	0.72
vi. Speaking effectively	4.29	0.78
vii. Understanding and applying scientific principles and methods	4.25	0.79
viii. Understanding and appreciating the arts	4.25	0.82
ix. Using a foreign language	4.24	0.86
Average Score	4.33	0.75

Figure 17: Comparison of Mean Scores of MUIC Experience Impacting Graduates' Development on Skills by Program



A Report on Graduates Survey for the Academic Year 2023-2024.

Academic Strategy Unit, Strategy and Academic Development Group, the Office of Educational Affairs.

November 2024



❖ Contribution to Personal Development

MUIC Experience Impacting Contribution to Personal Development:

Table 16: Mean and Percentage of the Graduates' Opinions on MUIC Experience Impacting Contribution to Personal Development.

MUIC Experience Impacting Contribution to Personal Development	Opinion Level by Program 2023-2024																										
	Business Administration												Fine and Applied Arts						THM			SS			HLD		
	BE (N = 11)			MF (N = 27)			MI (N = 30)			MK (N = 25)			CD (N = 18)			MC (N = 30)			IH (N = 30)			IRGA (N = 55)			IC (N = 24)		
	M	SD	% of Satisfaction at level 4&5	M	SD	% of Satisfaction at level 4&5	M	SD	% of Satisfaction at level 4&5	M	SD	% of Satisfaction at level 4&5	M	SD	% of Satisfaction at level 4&5	M	SD	% of Satisfaction at level 4&5	M	SD	% of Satisfaction at level 4&5	M	SD	% of Satisfaction at level 4&5	M	SD	% of Satisfaction at level 4&5
1. Time management	4.09	0.70	81.82%	4.48	0.94	88.89%	4.83	0.38	100.00%	4.64	0.64	92.00%	4.33	0.77	83.33%	4.20	0.71	83.33%	4.50	0.68	90.00%	4.60	0.60	94.55%	4.75	0.53	95.83%
2. Coping with change	3.91	0.83	63.64%	4.63	0.69	88.89%	4.70	0.53	96.67%	4.44	0.77	84.00%	4.39	0.61	94.44%	4.37	0.72	86.67%	4.47	0.63	93.33%	4.78	0.50	96.36%	4.63	0.58	95.83%
3. Ability to lead or guide others	4.00	0.77	72.73%	4.30	1.17	81.48%	4.63	0.56	96.67%	4.36	0.76	92.00%	4.06	1.06	72.22%	4.33	0.71	86.67%	4.40	0.77	83.33%	4.55	0.57	96.36%	4.29	0.62	91.67%
4. Self-confidence	4.00	0.77	72.73%	4.48	0.94	85.19%	4.60	0.50	100.00%	4.28	0.79	88.00%	4.33	0.77	83.33%	4.13	0.78	83.33%	4.33	0.71	86.67%	4.36	0.75	83.64%	4.46	0.59	95.83%
Average Score	4.00	0.77	72.73%	4.47	0.93	86.11%	4.69	0.49	98.33%	4.43	0.74	89.00%	4.28	0.80	83.33%	4.26	0.73	85.00%	4.43	0.70	88.33%	4.57	0.60	92.73%	4.53	0.58	94.79%

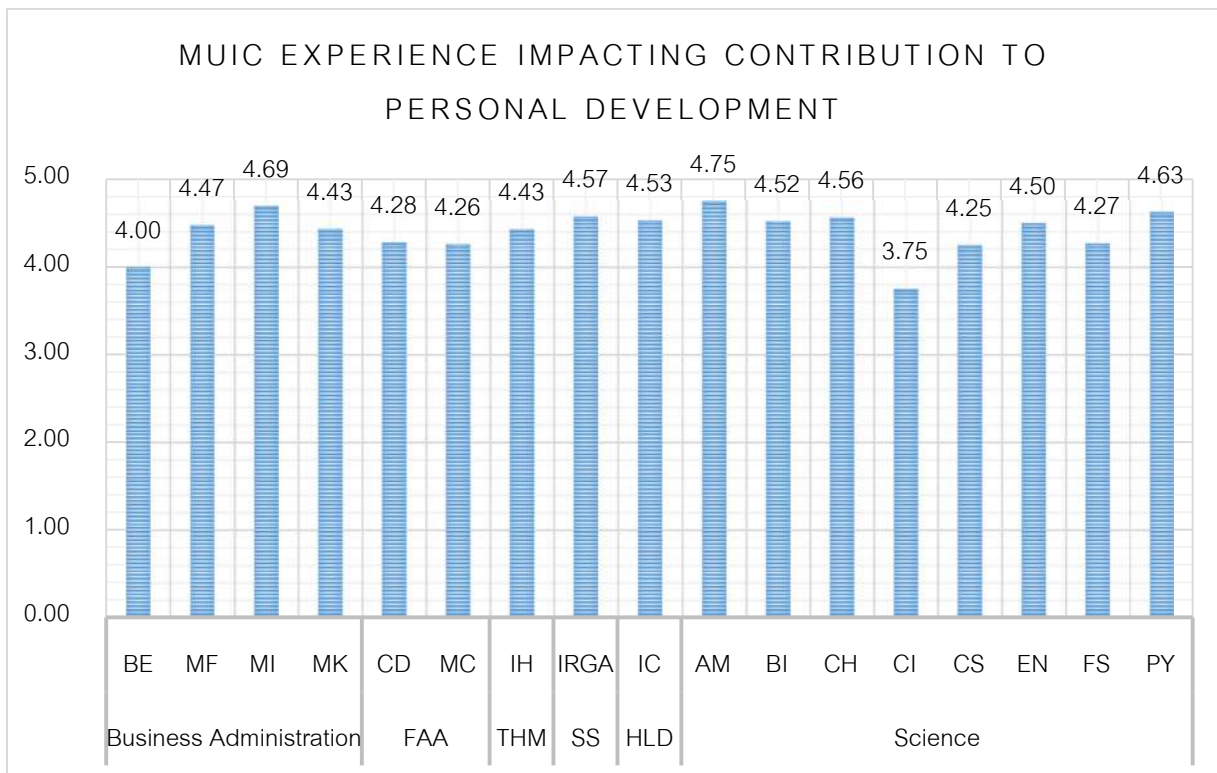
Table 16: (-Continued-)

MUIC Experience Impacting Contribution to Personal Development	Opinion Level by Program 2023-2024																										
	Science																								Overall MUIC		
	AM (N = 1)			BI (N = 34)			CH (N = 4)			CI (N = 1)			CS (N = 15)			EN (N = 2)			FS (N = 14)			PY (N = 2)			(N = 323)		
	M	SD	% of Satisfaction at level 4&5	M	SD	% of Satisfaction at level 4&5	M	SD	% of Satisfaction at level 4&5	M	SD	% of Satisfaction at level 4&5	M	SD	% of Satisfaction at level 4&5	M	SD	% of Satisfaction at level 4&5	M	SD	% of Satisfaction at level 4&5	M	SD	% of Satisfaction at level 4&5	M	SD	% of Satisfaction at level 4&5
1. Time management	5.00	.	100.00%	4.56	0.70	94.12%	4.50	1.00	75.00%	4.00	.	100.00%	4.33	0.72	86.67%	4.50	0.71	100.00%	4.29	0.73	85.71%	5.00	.	100.00%	4.51	0.70	91.25%
2. Coping with change	5.00	.	100.00%	4.59	0.66	91.18%	4.75	0.50	100.00%	4.00	.	100.00%	4.33	0.72	86.67%	5.00	.	100.00%	3.93	1.07	71.43%	4.50	0.71	100.00%	4.49	0.68	91.12%
3. Ability to lead or guide others	4.00	.	100.00%	4.50	0.71	88.24%	4.50	1.00	75.00%	3.00	.	0.00%	4.20	0.94	80.00%	4.00	1.41	50.00%	4.36	0.74	85.71%	4.50	0.71	100.00%	4.23	0.83	79.53%
4. Self-confidence	5.00	.	100.00%	4.44	0.70	88.24%	4.50	1.00	75.00%	4.00	.	100.00%	4.13	1.13	80.00%	4.50	0.71	100.00%	4.50	0.76	85.71%	4.50	0.71	100.00%	4.39	0.77	88.69%
Average Score	4.75	.	100.00%	4.52	0.69	90.44%	4.56	0.88	81.25%	3.75	.	75.00%	4.25	0.88	83.33%	4.50	0.94	87.50%	4.27	0.83	82.14%	4.63	0.71	100.00%	4.41	0.75	87.65%

MUIC Average Rating Score for MUIC Experience Impacting Contribution to Personal Development:  
 [Ranked from highest to lowest]

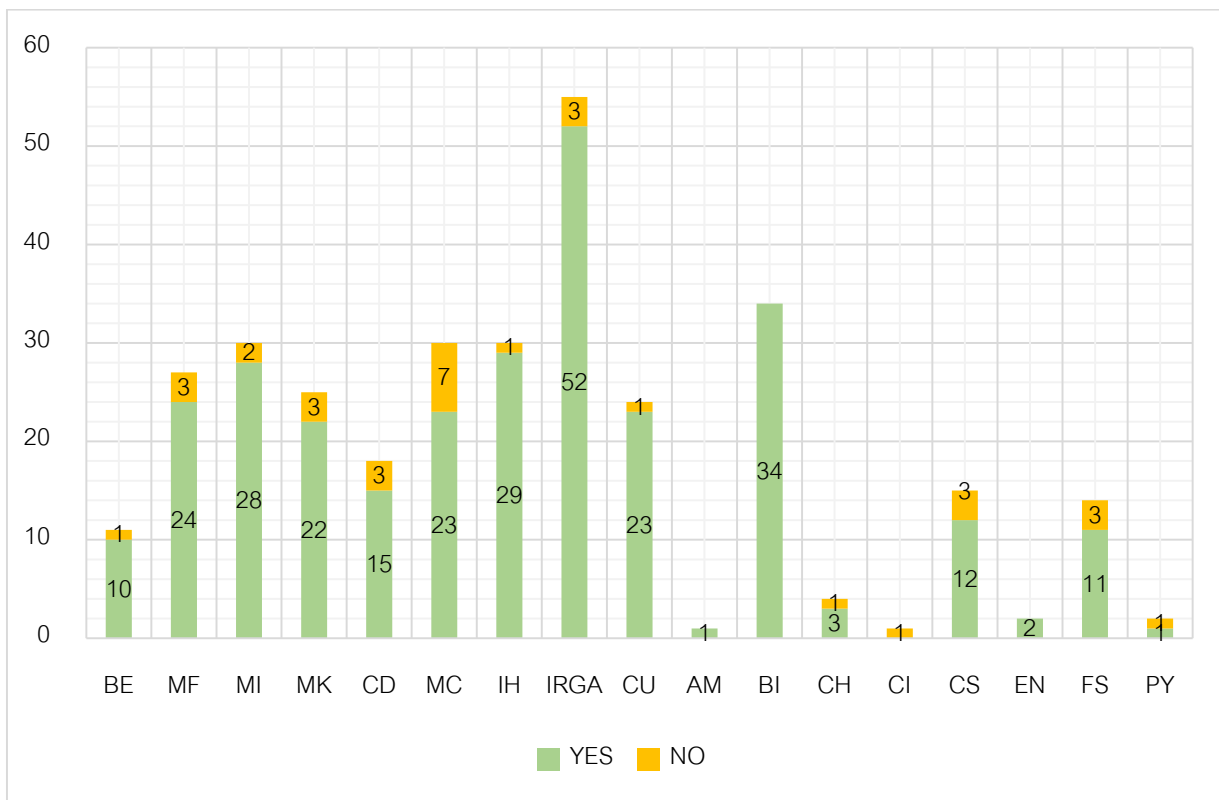
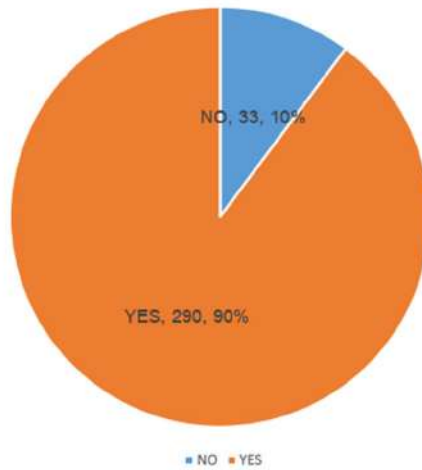
MUIC Experience Impacting Contribution to Personal Development	M	SD
i. Time management	4.51	0.70
ii. Coping with change	4.49	0.68
iii. Self-confidence	4.39	0.77
iv. Ability to lead or guide others	4.23	0.83
Average Score	4.41	0.75

Figure 18: Comparison of Mean Scores of MUIC Experience Impacting Contribution to Personal Development by Program

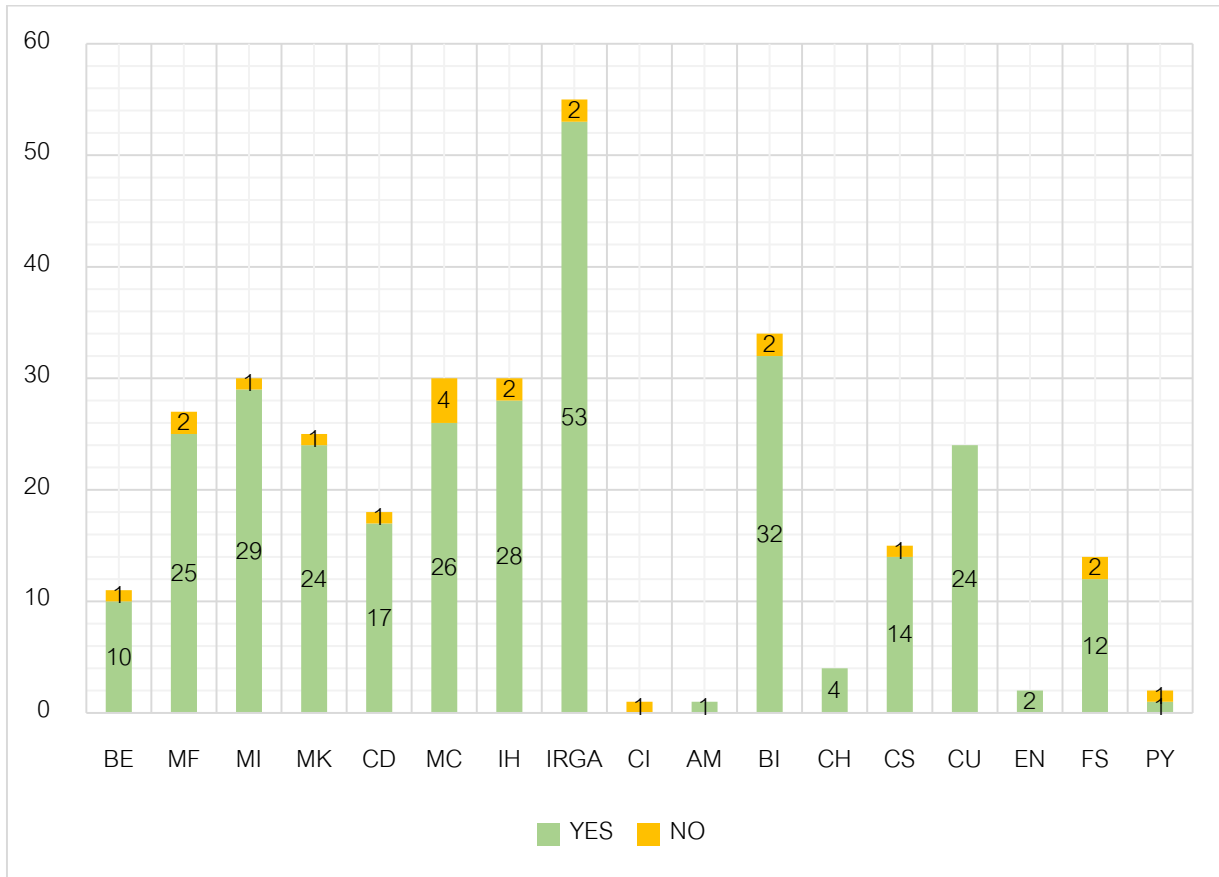
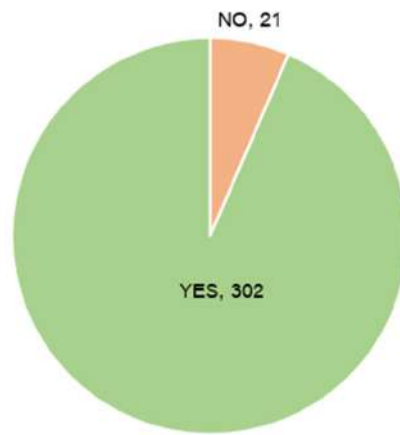


## Part IV: Willingness to Attend and to Recommend Others to Study at MUIC

### ❖ Willingness to Attend MUIC if the Graduates Had to Make a College Choice All Over Again



❖ Willingness to Recommend Others to Study at MUIC



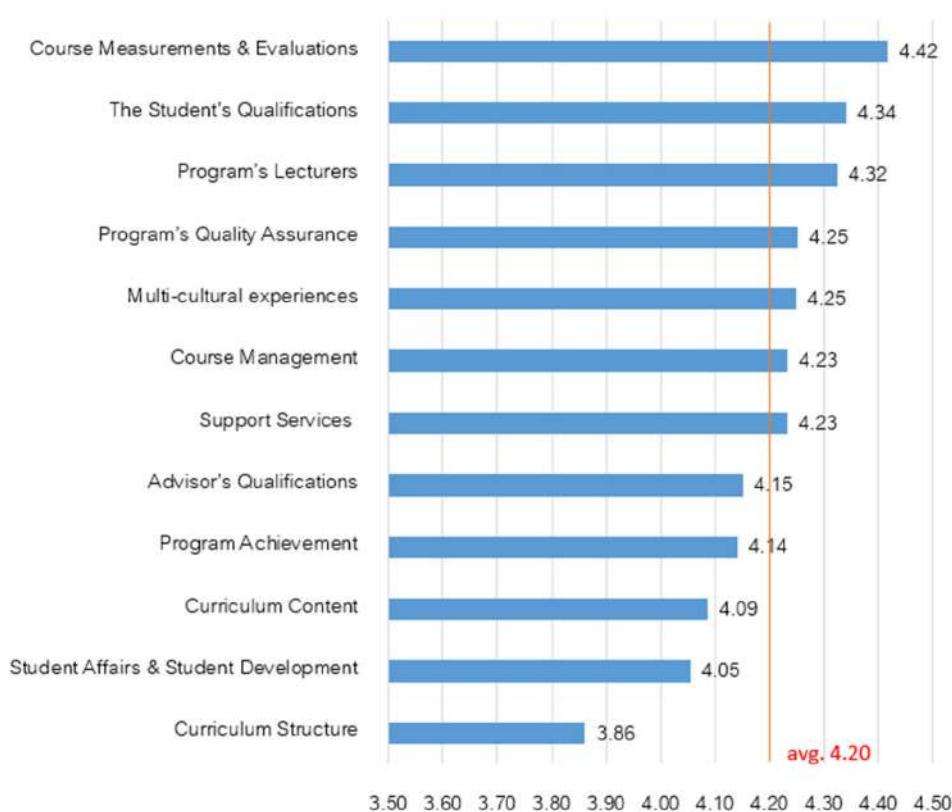
## CHAPTER IV

### Conclusion

The Graduates Survey for Academic Year 2023-2024 was conducted with a response rate of 32.33% with 323 out of 999 graduates who registered for graduation in the academic year 2023-2024. They were asked to complete the questionnaires by email for the purpose of curriculum development.

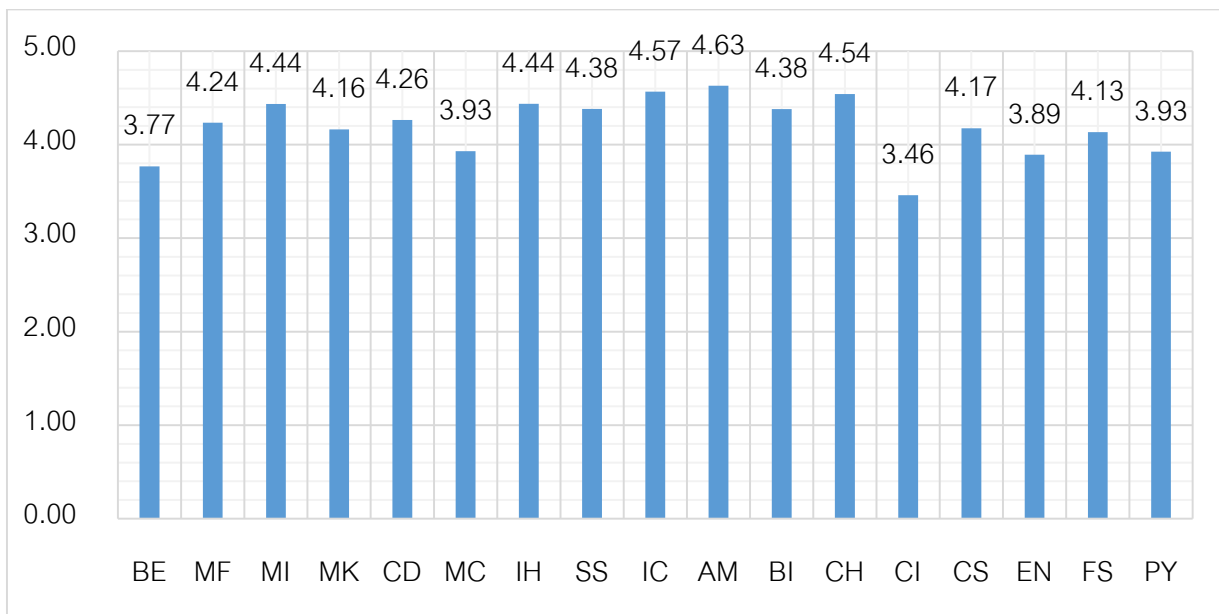
According to the results of the evaluation of MUIC curriculum from the graduates' views, the average score for overall MUIC was 4.20, excluding the aspect of Curriculum objectives, which vary among the majors. When the mean scores of all aspects were compared, the scores were rated and ranked in order from highest to lowest as shown in figure 19.

Figure 19: Comparison of Mean Scores in Each Aspect (Overall MUIC)



The findings show that the graduates were mostly satisfied with the aspect of course measurements & evaluations; while the aspect of curriculum structure should carefully be encouraged by the College, because of the lowest scores received. Most of the graduates reported that they did not agree with the number of credits for GE courses in Health & Physical Education.

Figure 20: Comparison of Average Mean Scores for All Aspects by Program



Finally, for the dimension of MUIC Experience Impacting Graduates' Development, the graduates additionally reported that studying at MUIC mostly impacts on 'Working and/or learning independently', and also that 'Time management' mostly affected their contribution to personal development.