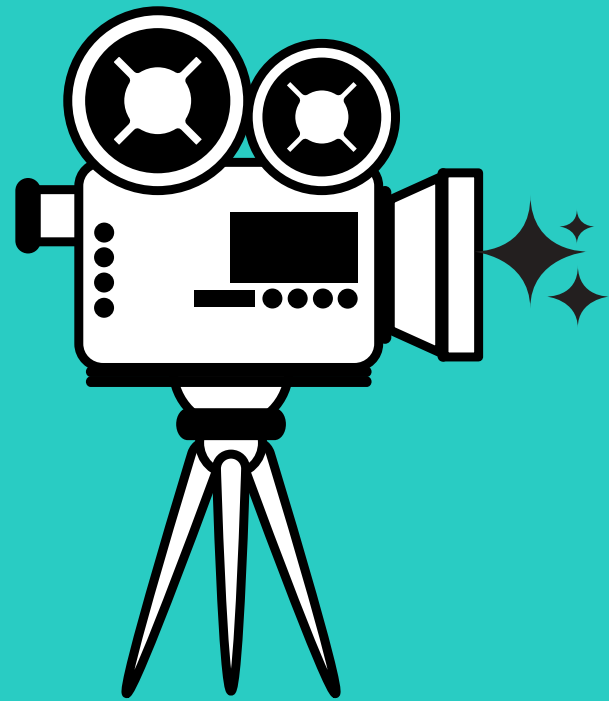
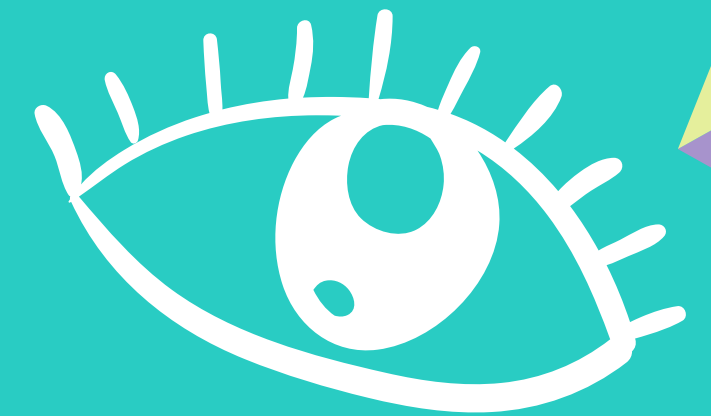


HOW TO **WORK** WITH CAMERA



LIGHTING

- SHADOW MUST CAST TO THE BACK OF YOU
- LIGHT MUST HIT YOUR FACE
- BEWARE OF ANGLES THAT CAUSE SHADOWS AROUND EYES & FACE
- ENSURE THAT THE VIDEO HAVE LOTS OF LIGHT
- WORK WITH THE PRODUCTION TEAM TO FIND YOUR BEST ANGLE



EYE CONTACT

- FOCUS ON CAMERA
- AVOID TOO MUCH EYE/HEAD MOVEMENT
- CHANNEL AS MUCH ENERGY AS WHEN YOU TEACH IN CLASSROOM

CHANNEL ENERGY

- WORK WITH CAMERA TO CHANNEL YOUR ENERGY AT BEST, RATHER THAN RELYING TOO MUCH ON EDITING



PRACTICE

- PRACTICE THE SPEECH
- ACT CONFIDENTLY
- TALK SLOWLY & CLEARLY, PAUSE AT THE RIGHT TIME TO ALLOW STUDENTS TIME TO PROCESS AND DIGEST WHAT YOU SAID

VOICE & TONE - BODY LANGUAGE

- SCORING AND BEATING THE SCRIPT HELPS DELIVERING THE SPEECH
- AVOID MONOTOMY
- GET THE BODY, VOICE, AND BREATHING IN SYNC
- CHOOSE THE RIGHT TONE FOR THE TARGET
- AVOID REPETITIVE HAND GESTURE, LET THE BODY SPEAK
- AVOID CROSSED ARMS, OR HANDS HELD BEHIND YOUR BACK OR IN THE POCKET



CLOTHING

- PREPARE YOUR OWN CLOTH
- BEST TO KEEP IT SIMPLE. AVOID SHINY FABRIC OR CLOTHS WITH PATTERNS
- AVOID STRONG OR TOO BRIGHT COLORS, INCLUDING POLKA DOT OR STRIPE CLOTH
- CHOOSE CLOTHING STYLE THAT MATCHES THE COURSE THEME. AND REPRESENT YOURSELF

WHEN YOU FEEL OWNERSHIP OF YOUR BODY, IT WILL SHOW THAT YOU COMMAND THE CAMERA AND ARE IN CONTROL OF THE SITUATION.