



ACCOMMODATION

There are many private apartments close to campus, and most private apartments provide a shuttle van service to the campus, free of charge. Students can arrange their own accommodation in the Bangkok area as per their preference. It takes about 45 minutes driving to central Bangkok. However, students are strongly recommended to live in off-campus accommodations in Salaya area to avoid being stuck in traffic. Project Development Unit assists students in finding and booking accommodation in the Salaya area.





HOUSING LIST

Bundit Home

(A private apartment nearby
15 minutes driving from the
campus)

Counter service hour
08:00 a.m. - 08:00 p.m.

More information here
<http://www.bundithome.com/>



Fee: 6,900-8,000 THB
Deposit: 13,800 THB
Key card: 200 THB
Van card deposit: 200 THB

Additional cost

Water bill: 30 THB/unit
Electric bill: 4 THB/unit
Bedding set: 450 THB
Cleaning fee on request: 200 THB/ time
Cleaning fee before checking-out: 500 THB

Room Amenities

- Furniture
- Balcony/terrace
- Non-smoking
- Free Wi-Fi
- Air conditioning
- Refrigerator
- Satellite/cable channels

Building Amenities

- Relax zone
- Elevator
- Fitness center
- Swimming pool
- CCTV
- Shop Service
- Security Keycard
- Laundry area
- Pick up Van (07:00 a.m. - 08:00 p.m.)



HOUSING LIST

Salaya One

(A private service apartment
nearby 15 minutes driving
from the campus)

Counter service hour
09:00 a.m. - 10:00 p.m.

More information here
<https://residences.salayaone.com/>



Fee: 16,000 -19,000 THB

Deposit: 1-2 months fee in advance

Additional cost

Water bill: 20 THB/unit

Electric bill: 7 THB/unit

Bedding set: 1,000 THB

Cleaning free once a week

Room Amenities

- Furniture
- Balcony/terrace
- Non-smoking
- Free Wi-Fi
- Air conditioning
- Refrigerator
- TV
- Kitchen zone

Building Amenities

- Co-living Space
- Elevator
- Fitness center
- Swimming pool
- CCTV
- Security Keycard
- Laundry area
- Pick up Van /Shuttle bus
(07:00 a.m. - 06:00 p.m.)



HOUSING LIST

IC LIVING

(Internal Dormitory)

Fee:

Deluxe Twin Room (36.50 Sq.m) 11,000 THB
Utilities fee is inclusive

Additional cost

Cleaning fee: 500 THB

Fine

Lost key/ keycard 300 THB/ each
Damage stuff

Room Amenities

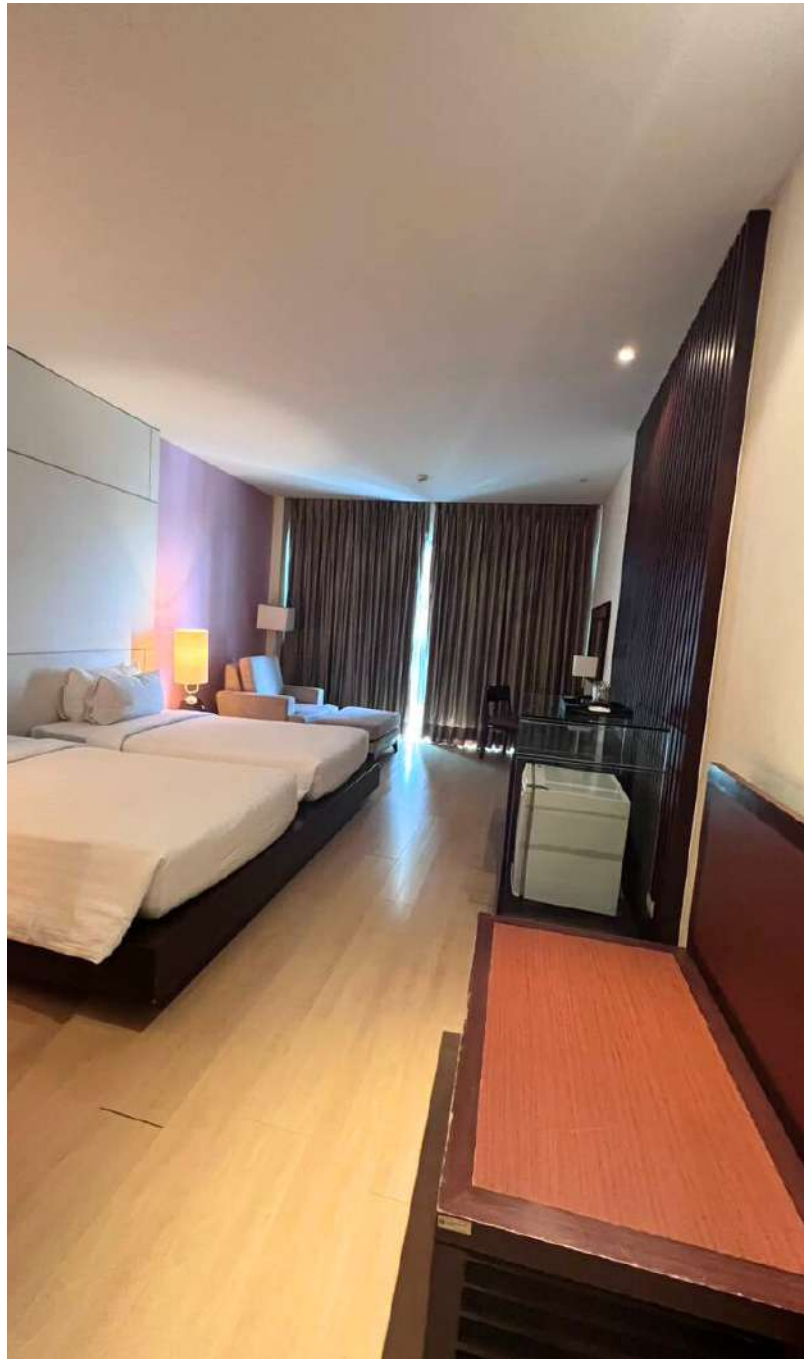
- Security Keycard
- Air Conditioner
- Balcony/terrace
- Bedding set and towels
- Water Heater
- Furniture
- Wi-Fi
- Non-smoking / No Alcohol

Building Amenities

- Elevator
- CCTV
- Security guard
- Common area: Microwave, fridge, pantry
- Washing Machine Vending

IC Living

Internal Dormitory



**Some rooms may
not have bathtub**





HOUSING LIST MAP

